

## VE-Cadherin (PT0553R) PT™ Rabbit mAb

CatalogNo: YM8373 **Recombinant** 

### Key Features

#### Host Species

- Rabbit

#### Reactivity

- Mouse,Rat,

#### Applications

- WB,IHC,IF,IP,ELISA

#### MW

- 88kD (Calculated)
- 90-140kD (Observed)

#### Isotype

- IgG,Kappa

### Recommended Dilution Ratios

IHC 1:200-1:1000

WB 1:2000-1:10000

IF 1:200-1:1000

ELISA 1:5000-1:20000

IP 1:50-1:200

### Storage

**Storage\*** -15°C to -25°C/1 year(Do not lower than -25°C)

**Formulation** PBS, 50% glycerol, 0.05% Proclin 300, 0.05%BSA

### Basic Information

**Clonality** Monoclonal

**Clone Number** PT0553R

### Immunogen Information

**Specificity** Endogenous

## | Target Information

**Gene name** CDH5

**Protein Name** Cadherin-5

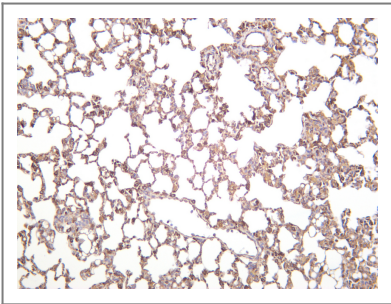
Organism	Gene ID	UniProt ID
Human	<a href="#">1003</a> ;	<a href="#">P33151</a> ;
Mouse	<a href="#">12562</a> ;	<a href="#">P55284</a> ;

**Cellular Localization** Membrane

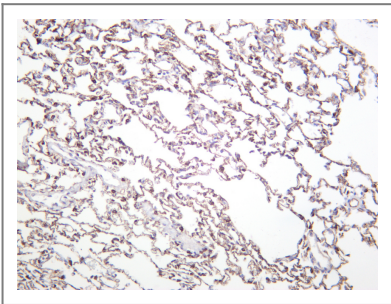
**Tissue specificity** Endothelial tissues and brain.

**Function** Function:Cadherins are calcium dependent cell adhesion proteins.,Function:Cadherins are calcium dependent cell adhesion proteins. They preferentially interact with themselves in a homophilic manner in connecting cells; cadherins may thus contribute to the sorting of heterogeneous cell types. This cadherin may play a important role in endothelial cell biology through control of the cohesion and organization of the intercellular junctions. It associates with alpha-catenin forming a link to the cytoskeleton.,similarity:Contains 5 cadherin domains.,subcellular location:Found at cell-cell boundaries and probably at cell-matrix boundaries.,tissue specificity:Endothelial tissues and brain.,

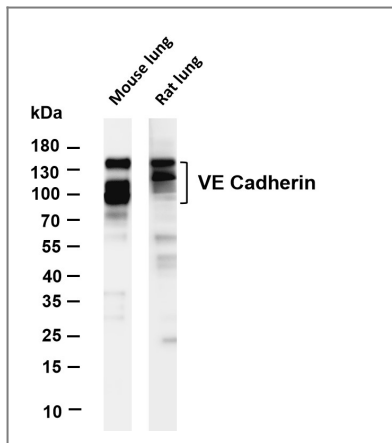
## | Validation Data



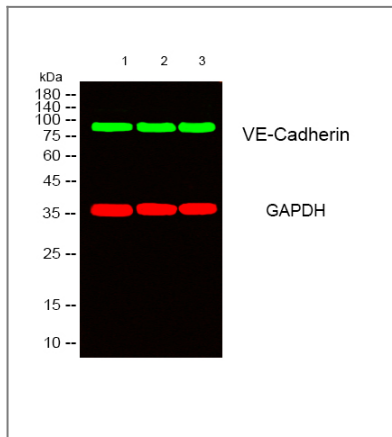
Mouse lung was stained with anti-VE Cadherin rabbit antibody



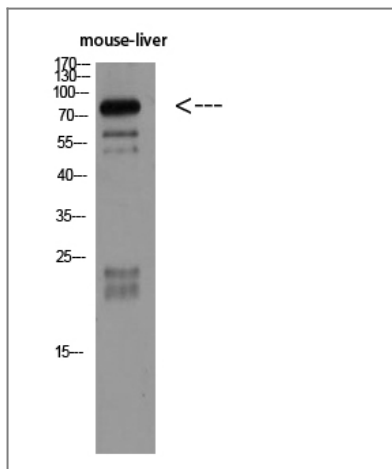
Rat lung was stained with anti-VE Cadherin rabbit antibody



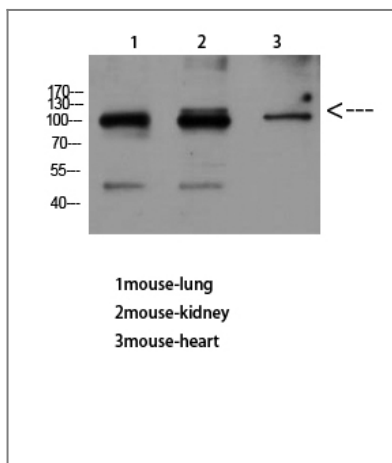
Various whole cell lysates were separated by 4-20% SDS-PAGE, and the membrane was blotted with anti-VE Cadherin antibody. The HRP-conjugated Goat anti-Rabbit IgG(H + L) antibody was used to detect the antibody. Lane 1: Mouse lung Lane 2: Rat lung Predicted band size: 88kDa Observed band size: 90-140kDa



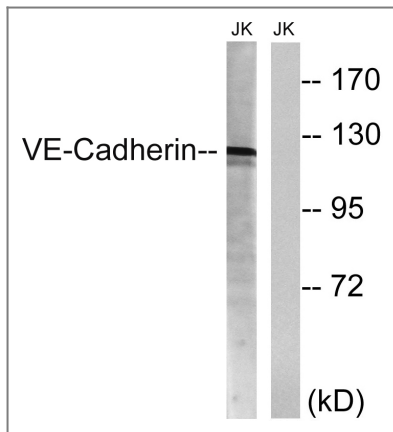
Western blot analysis of lysates from 1) HeLa, 2) mouse-lung ,3) mouse-kidney cells, (Green) primary antibody was diluted at 1:1000, 4° over night, secondary antibody(cat:RS23920)was diluted at 1:10000, 37° 1hour. (Red) GAPDH Monoclonal Antibody(2B8) (cat:YM3029) antibody was diluted at 1:5000 as loading control, 4° over night,secondary antibody(cat:RS23710)was diluted at 1:10000, 37° 1hour.



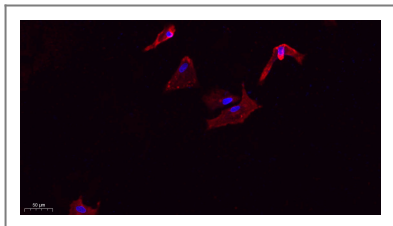
Western Blot analysis of mouse-liver using VE-Cadherin Antibody diluted at 1:500. Secondary antibody(catalog#:RS0002) was diluted at 1:20000



Western Blot analysis of mouse-lung mouse-kidney mouse-heart using VE-Cadherin Antibody diluted at 1:500. Secondary antibody(catalog#:RS0002) was diluted at 1:20000



Western blot analysis of lysates from Jurkat cells, using VE-Cadherin Antibody. The lane on the right is blocked with the synthesized peptide.



Immunofluorescence analysis of A549. 1, primary Antibody (red) was diluted at 1:200 (4°C overnight). 2, Goat Anti Rabbit IgG (H&L) - Alexa Fluor 594 Secondary antibody was diluted at 1:1000 (room temperature, 50 min). 3, DAPI (blue) 10 min.

## Contact information

Orders: order.cn@immunoway.com  
 Support: support.cn@immunoway.com  
 Telephone: 400-8787-807 (China)  
 Website: <http://www.immunoway.com.cn>  
 Address: 2200 Ringwood Ave San Jose, CA 95131 USA



Please scan the QR code to access additional product information:  
**VE-Cadherin (PT0553R) PT™ Rabbit mAb**

For Research Use Only. Not for Use in Diagnostic Procedures.

[Antibody](#) | [ELISA Kits](#) | [Protein](#) | [Reagents](#)