

CD43 (PT0540R) PT™ Rabbit mAb

CatalogNo: YM8361 **Recombinant** 

Key Features

Host Species

- Rabbit

Reactivity

- Human

Applications

- WB,IHC,IF,ELISA

MW

- 40kD (Calculated)
- 130kD (Observed)

Isotype

- IgG,Kappa

Recommended Dilution Ratios

IHC 1:200-1:1000

WB 1:2000-1:10000

IF 1:200-1:1000

ELISA 1:5000-1:20000

Storage

Storage* -15°C to -25°C/1 year(Do not lower than -25°C)**Formulation** PBS, 50% glycerol, 0.05% Proclin 300, 0.05%BSA

Basic Information

Clonality Monoclonal**Clone Number** PT0540R

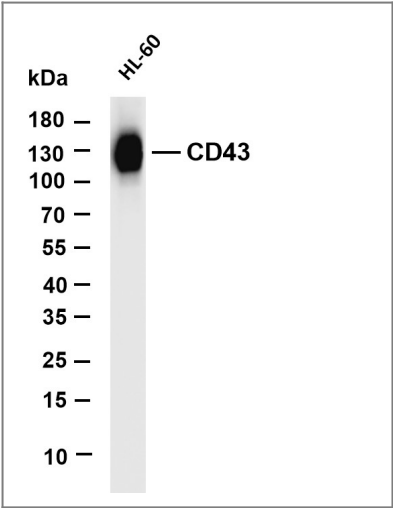
Immunogen Information

Specificity Endogenous

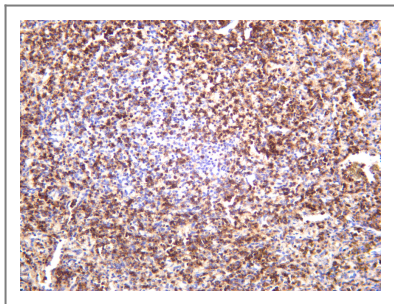
| Target Information

| | | | |
|-----------------------|---|-------------------------|--------------------------|
| Gene name | SPN CD43 | | |
| Protein Name | Leukosialin (GPL115) (Galactoglycoprotein) (GALGP) (Leukocyte sialoglycoprotein) (Sialophorin) (CD antigen CD43) [Cleaved into: CD43 cytoplasmic tail (CD43-ct) (CD43ct)] | | |
| | Organism | Gene ID | UniProt ID |
| | Human | 6693 ; | P16150 ; |
| | Mouse | 20737 ; | P15702 ; |
| | Rat | | P13838 ; |
| Cellular Localization | Membrane | | |
| Tissue specificity | Cell surface of thymocytes, T-lymphocytes, neutrophils, plasma cells and myelomas. | | |
| Function | Disease:CD43 expression is defective on the T-cells of males with the immunodeficiency Wiskott-Aldrich syndrome. Affected males are susceptible to opportunistic infections and do not respond to polysaccharide antigens, reflecting defects in cytotoxic and helper T-cell functions.,Function:One of the major glycoproteins of thymocytes and T lymphocytes. Plays a role in the physicochemical properties of the T-cell surface and in lectin binding. Presents carbohydrate ligands to selectins. Has an extended rodlike structure that could protrude above the glycocalyx of the cell and allow multiple glycan chains to be accessible for binding. Is a counter receptor for SN/Siglec-1 (By similarity). During T-cell activation is actively removed from the T-cell-APC (antigen-presenting cell) contact site thus suggesting a negative regulatory role in adaptive immune response.,PTM:Glycosylated; has a high content of sialic acid and O-linked carbohydrate structures.,subunit:Interacts with HIPK2 via the cytoplasmic domain.,tissue specificity:Cell surface of thymocytes, T-lymphocytes, neutrophils, plasma cells and myelomas., | | |

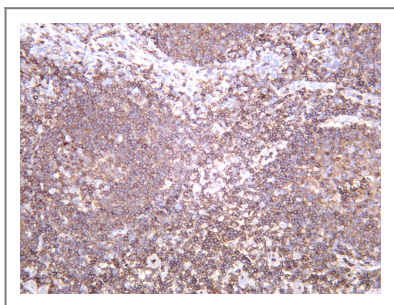
| Validation Data



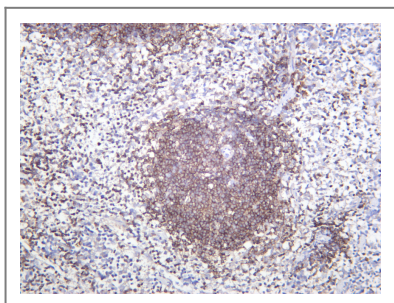
Various whole cell lysates were separated by 4-20% SDS-PAGE, and the membrane was blotted with anti-CD43 antibody. The HRP-conjugated Goat anti-Rabbit IgG(H + L) antibody was used to detect the antibody. Lane 1: HL-60 Predicted band size: 40kDa Observed band size: 130kDa



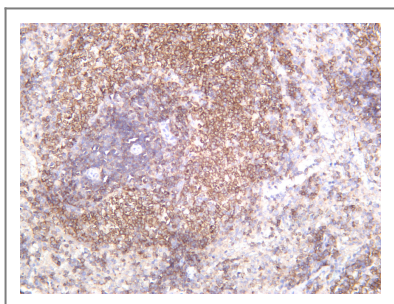
Human spleen was stained with anti-CD43 rabbit antibody



Human tonsil was stained with anti-CD43 rabbit antibody



Mouse spleen was stained with anti-CD43 rabbit antibody



Rat spleen was stained with anti-CD43 rabbit antibody

| Contact information

Orders: order.cn@immunoway.com
Support: support.cn@immunoway.com
Telephone: 400-8787-807(China)
Website: <http://www.immunoway.com.cn>
Address: 2200 Ringwood Ave San Jose, CA 95131 USA



Please scan the QR code
to access additional
product information:
CD43 (PT0540R)
PT™ Rabbit mAb