

# $\beta$ -Tubulin (PT0505R) PT™ Rabbit mAb

CatalogNo: YM8332 **Recombinant** 

## Key Features

### Host Species

- Rabbit

### Reactivity

- Human, Mouse, Rat

### Applications

- WB, IHC, IF, IP, ELISA

### MW

- 50kD (Calculated)  
50kD (Observed)

### Isotype

- IgG, Kappa

## Storage

**Storage\*** -15°C to -25°C/1 year (Do not lower than -25°C)

**Formulation** PBS, 50% glycerol, 0.05% Proclin 300, 0.05% BSA

## Recommended Dilution Ratios

**IHC 1:2000-1:10000**

**WB 1:2000-1:10000**

**IF 1:200-1:1000**

**ELISA 1:5000-1:20000**

**IP 1:50-1:200**

## Basic Information

**Clonality** Monoclonal

**Clone Number** PT0505R

## Immunogen Information

**Immunogen** The specific immunogen used to produce this antibody is proprietary information.

**Specificity** Endogenous

## Target Information

**Gene name** TUBB  
**Protein Name** Tubulin beta chain (Tubulin beta-5 chain)

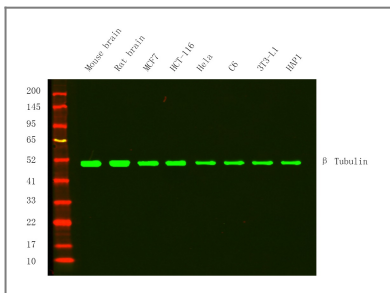
Organism	Gene ID	UniProt ID
Human	<a href="#">203068</a> ;	<a href="#">P07437</a> ;
Mouse		<a href="#">P99024</a> ;
Rat		<a href="#">P69897</a> ;

**Cellular Localization** Cytoplasm

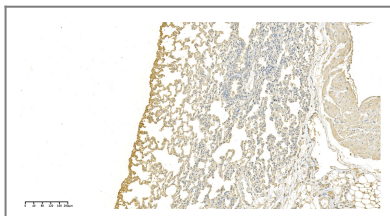
**Tissue specificity** Ubiquitously expressed with highest levels in spleen , thymus and immature brain.

**Function** Domain:The highly acidic C-terminal region may bind cations such as calcium. ,Function:Tubulin is the major constituent of microtubules. It binds two moles of GTP , one at an exchangeable site on the beta chain and one at a non-exchangeable site on the alpha-chain. ,online information:Tubulin entry ,similarity:Belongs to the tubulin family. ,subunit:Dimer of alpha and beta chains. ,tissue specificity:Ubiquitously expressed with highest levels in spleen , thymus and immature brain. ,

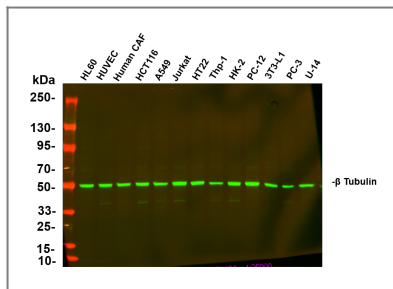
## Validation Data



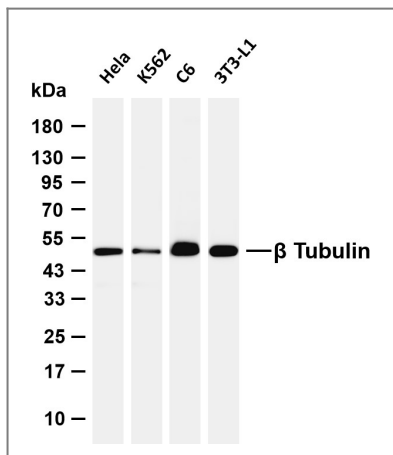
Western Blot analysis using Various whole cell lysates were separated by 4-20% SDS-PAGE, and the membrane was blotted with anti- $\beta$  Tubulin Rabbit mAb-YM8332 diluted at 1:5000. Secondary : Dylight 800, Goat Anti Rabbit IgG (RS23920 1:10000)



Rat lungs was stained with anti- $\beta$  Tubulin Rabbit antibody



Various whole cell lysates were separated by 4-20% SDS-PAGE, and the primary antibody was used at 4°C over night with a 1:25000 dilution . The Dylight 800-conjugated Goat anti-Rabbit antibody (Cat:RS23920) was used to detect the antibody. Lane1: HL60 - Human promyelocytic leukemia cell Lane2: HUVEC - Human umbilical vein endothelial cell Lane3: Human CAF - Human cancer-associated fibroblast Lane4: HCT116 - Human colorectal carcinoma Lane5: A549 - Human lung carcinoma Lane6: Jurkat - Human T lymphocyte leukemia Lane7: HT22 - Mouse hippocampal neuronal Lane8: Thp-1 - Human monocytic leukemia Lane9: HK-2 - Human proximal tubular epithelial Lane10: PC-12 - Rat adrenal pheochromocytoma Lane11: 3T3-L1 - Mouse embryonic fibroblast Lane12: PC-3 - Human prostate adenocarcinoma Lane13: U-14 - Mouse cervical carcinoma Predicted band size: 50kDa Observed band size: 50kDa



Various whole cell lysates were separated by 4-20% SDS-PAGE, and the membrane was blotted with anti-β Tubulin (PT0505R) antibody. The HRP-conjugated Goat anti-Rabbit IgG (H + L) antibody was used to detect the antibody. Lane 1: HeLa Lane 2: K562 Lane 3: C6 Lane 4: 3T3-L1 Predicted band size: 50kDa Observed band size: 50kDa

## Contact information

Orders: [order.cn@immunoway.com](mailto:order.cn@immunoway.com)  
 Support: [support.cn@immunoway.com](mailto:support.cn@immunoway.com)  
 Telephone: 400-8787-807(China)  
 Website: <http://www.immunoway.com.cn>  
 Address: 2200 Ringwood Ave San Jose, CA 95131 USA



Please scan the QR code to access additional product information:  
**β-Tubulin (PT0505R)**  
**PT™ Rabbit mAb**

For Research Use Only. Not for Use in Diagnostic Procedures.

[Antibody](#) | [ELISA Kits](#) | [Protein](#) | [Reagents](#)