

# Syk (PT0468R) PT™ Rabbit mAb

CatalogNo: YM8302 **Recombinant** 

## Key Features

### Host Species

- Rabbit

### Reactivity

- Human, Mouse, Rat

### Applications

- WB, IHC, IF, IP, ELISA

### MW

- 72kD (Calculated)  
65kD (Observed)

### Isotype

- IgG, Kappa

## Recommended Dilution Ratios

IHC 1:400-1:1000

WB 1:2000-1:10000

IF 1:200-1:1000

ELISA 1:5000-1:20000

IP 1:50-1:200

## Storage

**Storage\*** -15°C to -25°C/1 year (Do not lower than -25°C)**Formulation** PBS, 50% glycerol, 0.05% Proclin 300, 0.05% BSA

## Basic Information

**Clonality** Monoclonal**Clone Number** PT0468R

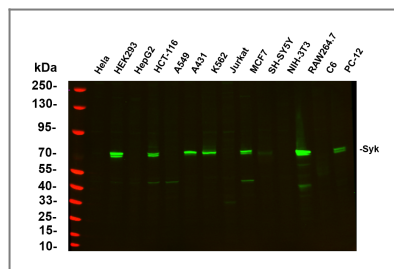
## Immunogen Information

**Specificity** Endogenous

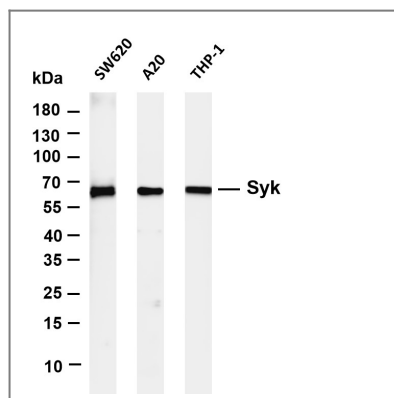
## | Target Information

Gene name	SYK		
Protein Name	Tyrosine-protein kinase SYK		
	Organism	Gene ID	UniProt ID
	Human	<a href="#">6850</a> ;	<a href="#">P43405</a> ;
	Mouse	<a href="#">20963</a> ;	<a href="#">P48025</a> ;
	Rat	<a href="#">25155</a> ;	<a href="#">Q64725</a> ;
Cellular Localization	Membrane		
Tissue specificity	Widely expressed in hematopoietic cells (at protein level) (PubMed:8163536). Expressed in neutrophils (at protein level) (PubMed:15123770). Within the B-cell compartment, expressed from pro- and pre-B cells to plasma cells (PubMed:8163536).		
Function	Catalytic activity:ATP + a [protein]-L-tyrosine = ADP + a [protein]-L-tyrosine phosphate.,Function:Positive effector of BCR-stimulated responses. Couples the B-cell antigen receptor (BCR) to the mobilization of calcium ion either through a phosphoinositide 3-kinase-dependent pathway, when not phosphorylated on tyrosines of the linker region, or through a phospholipase C-gamma-dependent pathway, when phosphorylated on Tyr-348 and Tyr-352. Thus the differential phosphorylation of Syk can determine the pathway by which BCR is coupled to the regulation of intracellular calcium ion.,PTM:Autophosphorylated.,PTM:Phosphorylation on Tyr-323 creates a binding site for c-Cbl, an adapter protein that serves as a negative regulator of BCR-stimulated calcium ion signaling.,PTM:Phosphorylation on Tyr-348 and Tyr-352 enhances the phosphorylation and activation of phospholipase C-gamma and the early phase of calcium ion mobilization via a phosphoinositide 3-kinase-independent pathway.,PTM:Ubiquitinated by CBLB after BCR activation; which promotes proteasomal degradation.,similarity:Belongs to the protein kinase superfamily. Tyr protein kinase family.,similarity:Belongs to the protein kinase superfamily. Tyr protein kinase family. SYK/ZAP-70 subfamily.,similarity:Contains 1 protein kinase domain.,similarity:Contains 2 SH2 domains.,subunit:Interacts with CBL and SLA when it is phosphorylated. The interaction with SLA may link it to CBL, leading to its destruction. Interacts with phosphorylated NFAM1 (By similarity). Interacts with Epstein-Barr virus LMP2A. Interacts through its SH2 domains with the phosphorylated ITAM domain of CD79A which stimulates SYK autophosphorylation and activation. Interacts with FCRL3.,		

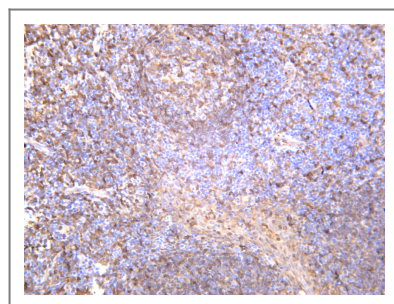
## | Validation Data



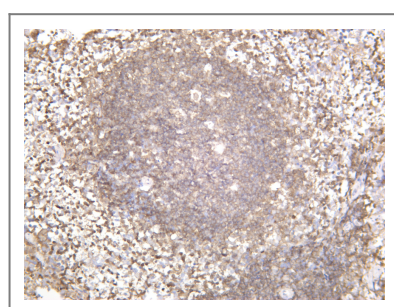
Various whole cell lysates were separated by 4-20% SDS-PAGE, and the primary antibody was used at 4°C, over night with a 1:5000 dilution . The Dylight 800-conjugated Goat anti-Rabbit antibody(Cat:RS23920) was used to detect the antibody. Lane1: HeLa - Human cervical cancer Lane2: HEK293 - Human normal embryonic kidney Lane3: HepG2 - Human hepatocellular carcinoma Lane4: HCT-116 - Human colon cancer Lane5: A549 - Human lung adenocarcinoma Lane6: A431 - Human skin squamous cell carcinoma Lane7: K562 - Human chronic myeloid leukemia Lane8: Jurkat - Human acute T cell leukemia cells Lane9: MCF7 - Human breast cancer Lane10: SH-SY5Y - Human neuroblastoma cells Lane11: NIH-3T3 - NIH mouse fibroblasts Lane12: RAW264.7 - Mouse mononuclear macrophage leukemia cells Lane13: C6 - Rat glioma cells Lane14: PC-12 - Pheochromocytoma in rats Predicted band size: 75kDa Observed band size: 70kDa



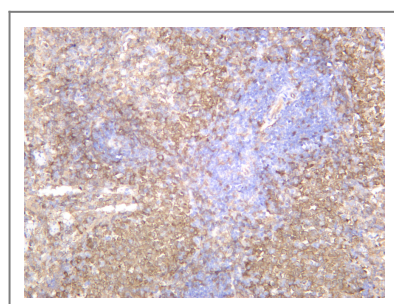
Various whole cell lysates were separated by 4-20% SDS-PAGE, and the membrane was blotted with anti-Syk antibody. The HRP-conjugated Goat anti-Rabbit IgG(H + L) antibody was used to detect the antibody. Lane 1: SW620 Lane 2: A20 Lane 3: THP-1 Predicted band size: 72kDa Observed band size: 65kDa



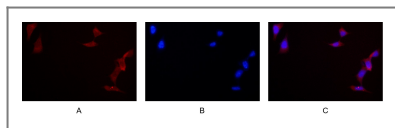
Human spleen was stained with anti-Syk rabbit antibody



Mouse spleen was stained with anti-Syk rabbit antibody



Rat spleen was stained with anti-Syk rabbit antibody



Immunofluorescence analysis of HEK293. Picture A: Syk antibody (red). Picture B: DAPI (blue). Picture C: Merge of A+B

## Contact information

Orders: [order.cn@immunoway.com](mailto:order.cn@immunoway.com)  
Support: [support.cn@immunoway.com](mailto:support.cn@immunoway.com)  
Telephone: 400-8787-807(China)  
Website: <http://www.immunoway.com.cn>  
Address: 2200 Ringwood Ave San Jose, CA 95131 USA



Please scan the QR code  
to access additional  
product information:  
**Syk (PT0468R) PT™  
Rabbit mAb**

For Research Use Only. Not for Use in Diagnostic Procedures.

[Antibody](#) | [ELISA Kits](#) | [Protein](#) | [Reagents](#)