

## MYL9 (PT0379R) PT™ Rabbit mAb

CatalogNo: YM8285 **Recombinant** 

### Key Features

#### Host Species

- Rabbit

#### Reactivity

- Human, Mouse, Rat

#### Applications

- WB, IHC, IF, ELISA

#### MW

- 20kD (Calculated)
- 20kD (Observed)

#### Isotype

- IgG, Kappa

### Storage

**Storage\*** -15°C to -25°C/1 year (Do not lower than -25°C)**Formulation** PBS, 50% glycerol, 0.05% Proclin 300, 0.05% BSA

### Recommended Dilution Ratios

**IHC 1:200-1:1000****WB 1:2000-1:10000****IF 1:200-1:1000****ELISA 1:5000-1:20000**

### Basic Information

**Clonality** Monoclonal**Clone Number** PT0379R

### Immunogen Information

**Specificity** Endogenous

## Target Information

**Gene name** MYL9

**Protein Name** Myosin regulatory light polypeptide 9

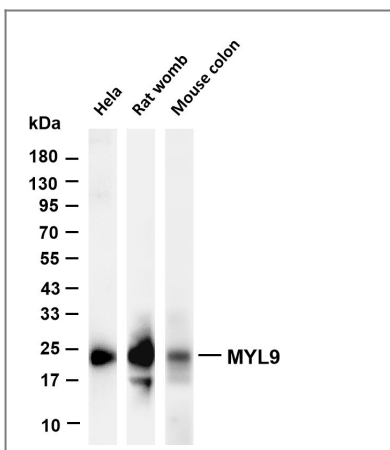
Organism	Gene ID	UniProt ID
Human	<a href="#">10398;</a>	<a href="#">P24844;</a>
Mouse	<a href="#">98932;</a>	<a href="#">Q9CQ19;</a>
Rat	<a href="#">296313;</a>	<a href="#">Q64122;</a>

**Cellular Localization** Cytoplasm

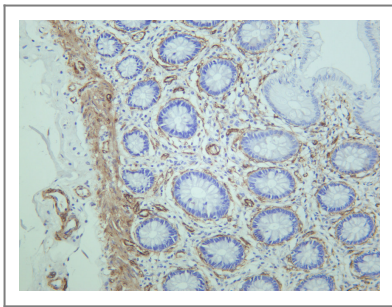
**Tissue specificity** Smooth muscle tissues and in some, but not all, nonmuscle cells.

**Function** Function:Myosin regulatory subunit that plays an important role in regulation of both smooth muscle and nonmuscle cell contractile activity via its phosphorylation. Implicated in cytokinesis, receptor capping, and cell locomotion.,miscellaneous:This chain binds calcium.,PTM:Phosphorylation increases the actin-activated myosin ATPase activity and thereby regulates the contractile activity. It is required to generate the driving force in the migration of the cells but not necessary for localization of myosin-2 at the leading edge.,similarity:Contains 3 EF-hand domains.,subunit:Myosin is a hexamer of 2 heavy chains and 4 light chains.,tissue specificity:Smooth muscle tissues and in some, but not all, nonmuscle cells.,

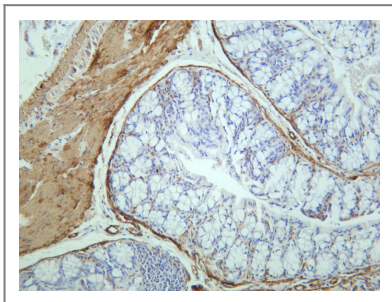
## Validation Data



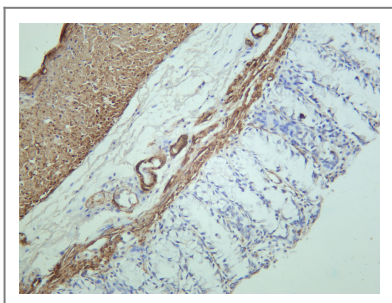
Various whole cell lysates were separated by 4-20% SDS-PAGE, and the membrane was blotted with anti-MYL9 antibody. The HRP-conjugated Goat anti-Rabbit IgG(H + L) antibody was used to detect the antibody. Lane 1: HeLa Lane 2: Rat womb Predicted band size: 20kDa Observed band size: 20kDa



Human colon was stained with anti-MYL9 rabbit antibody



Mouse colon was stained with anti-MYL9 rabbit antibody



Rat colon was stained with anti-MYL9 rabbit antibody

## Contact information

Orders: [order.cn@immunoway.com](mailto:order.cn@immunoway.com)  
Support: [support.cn@immunoway.com](mailto:support.cn@immunoway.com)  
Telephone: 400-8787-807(China)  
Website: <http://www.immunoway.com.cn>  
Address: 2200 Ringwood Ave San Jose, CA 95131 USA



Please scan the QR code  
to access additional  
product information:  
**MYL9 (PT0379R)**  
**PT™ Rabbit mAb**

For Research Use Only. Not for Use in Diagnostic Procedures.

[Antibody](#) | [ELISA Kits](#) | [Protein](#) | [Reagents](#)