

## MEK1/2 (PT0433R) PT™ Rabbit mAb

CatalogNo: YM8273 **Recombinant** 

### Key Features

#### Host Species

- Rabbit

#### Reactivity

- Human, Mouse, Rat

#### Applications

- WB, IHC, IF, IP, ELISA

#### MW

- 44kD (Calculated)
- 44kD (Observed)

#### Isotype

- IgG, Kappa

### Storage

**Storage\*** -15°C to -25°C/1 year (Do not lower than -25°C)

**Formulation** PBS, 50% glycerol, 0.05% Proclin 300, 0.05% BSA

### Recommended Dilution Ratios

IHC 1:500-1:2000

WB 1:1000-1:5000

IF 1:200-1:1000

ELISA 1:5000-1:20000

IP 1:50-1:200

### Basic Information

**Clonality** Monoclonal

**Clone Number** PT0433R

### Immunogen Information

**Specificity** Endogenous

---

## | Target Information

**Gene name** MAP2K1/MAP2K2

**Protein Name** Dual specificity mitogen-activated protein kinase kinase 1/2

Organism	Gene ID	UniProt ID
Human	<a href="#">5604</a> ; <a href="#">5605</a> ;	<a href="#">Q02750</a> ; <a href="#">P36507</a> ;
Mouse	<a href="#">26395</a> ; <a href="#">26396</a> ;	
Rat	<a href="#">170851</a> ; <a href="#">58960</a> ;	<a href="#">Q01986</a> ; <a href="#">P36506</a> ;

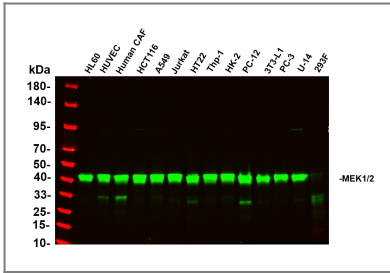
**Cellular Localization** Cytoplasm

**Tissue specificity** Widely expressed, with extremely low levels in brain.

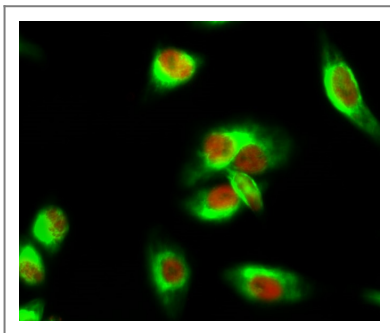
**Function** Catalytic activity:ATP + a protein = ADP + a phosphoprotein.,Disease:Defects in MAP2K1 are a cause of cardiofaciocutaneous syndrome (CFC syndrome) [MIM:115150]; also known as cardio-facio-cutaneous syndrome. CFC syndrome is characterized by a distinctive facial appearance, heart defects and mental retardation. Heart defects include pulmonic stenosis, atrial septal defects and hypertrophic cardiomyopathy. Some affected individuals present with ectodermal abnormalities such as sparse, friable hair, hyperkeratotic skin lesions and a generalized ichthyosis-like condition. Typical facial features are similar to Noonan syndrome. They include high forehead with bitemporal constriction, hypoplastic supraorbital ridges, downslanting palpebral fissures, a depressed nasal bridge, and posteriorly angulated ears with prominent helices. The inheritance of CFC syndrome is autosomal dominant.,enzyme regulation:Activated by phosphorylation.,Function:Catalyzes the concomitant phosphorylation of a threonine and a tyrosine residue in a Thr-Glu-Tyr sequence located in MAP kinases. Activates ERK1 and ERK2 MAP kinases.,PTM:Acetylation by Yersinia yopJ prevents phosphorylation and activation, thus blocking the MAPK signaling pathway.,PTM:Phosphorylation on Ser/Thr by MAP kinase kinase kinases (RAF or MEKK1) regulates positively the kinase activity.,similarity:Belongs to the protein kinase superfamily.,similarity:Belongs to the protein kinase superfamily. STE Ser/Thr protein kinase family. MAP kinase kinase subfamily.,similarity:Contains 1 protein kinase domain.,subunit:Interacts with MORG1 (By similarity). Interacts with Yersinia yopJ.,

---

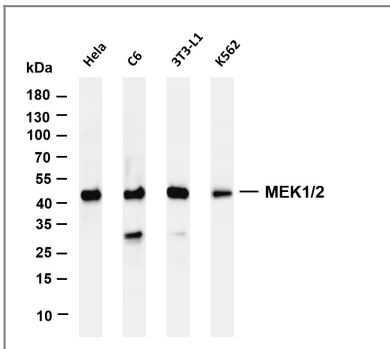
## | Validation Data



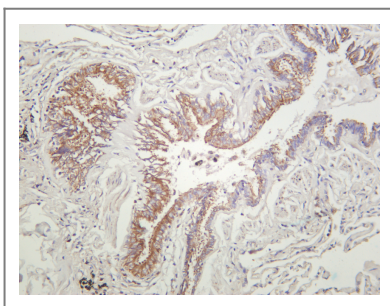
Various whole cell lysates were separated by 4-20% SDS-PAGE, and the primary antibody was used at 4°C, over night with a 1:2500 dilution . The Dylight 800-conjugated Goat anti-Rabbit antibody(Cat:RS23920) was used to detect the antibody. Lane1: HL60 - Human promyelocytic leukemia cell Lane2: HUVEC - Human umbilical vein endothelial cell Lane3: Human CAF - Human cancer-associated fibroblast Lane4: HCT116 - Human colorectal carcinoma Lane5: A549 - Human lung carcinoma Lane6: Jurkat - Human T lymphocyte leukemia Lane7: HT22 - Mouse hippocampal neuronal Lane8: Thp-1 - Human monocytic leukemia Lane9: HK-2 - Human proximal tubular epithelial Lane10: PC-12 - Rat adrenal pheochromocytoma Lane11: 3T3-L1 - Mouse embryonic fibroblast Lane12: PC-3 - Human prostate adenocarcinoma Lane13: U-14 - Mouse cervical carcinoma Lane14: 293F - HEK293 derivative, adapted for suspension culture Predicted band size: 44kDa Observed band size: 44kDa



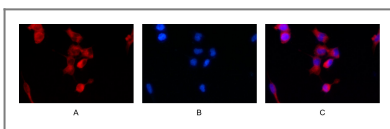
Immunofluorescence analysis of HeLa cell. 1, mouse Histone H3 Antibody YM3808 (red) was diluted at 1:200(4° overnight). MEK1/2 (PT0433R) PT™ Rabbit mAb (green) was diluted at 1:200(4° overnight). 2, Goat Anti Rabbit Alexa Fluor 488 Catalog:RS3211 was diluted at 1:1000(room temperature, 50min). Goat Anti Mouse Alexa Fluor 594 Catalog:RS3608 was diluted at 1:1000(room temperature, 50min).



Various whole cell lysates were separated by 4-20% SDS-PAGE, and the membrane was blotted with anti- MEK1/2 antibody. The HRP-conjugated Goat anti-Rabbit IgG(H + L) antibody was used to detect the antibody. Lane 1: HeLa Lane 2: C6 Lane 3: 3T3-L1 Lane 4: K562 Predicted band size: 44kDa Observed band size: 44kDa



Human lung carcinoma was stained with anti-MEK1/2 rabbit antibody



Immunofluorescence analysis of HEK293. Picture A: MEK1/2 antibody (red). Picture B: DAPI (blue). Picture C: Merge of A+B

## Contact information

Orders: order.cn@immunoway.com  
Support: support.cn@immunoway.com  
Telephone: 400-8787-807(China)  
Website: http://www.immunoway.com.cn  
Address: 2200 Ringwood Ave San Jose, CA 95131 USA



Please scan the QR code  
to access additional  
product information:  
**MEK1/2 (PT0433R)**  
**PT™ Rabbit mAb**

---

For Research Use Only. Not for Use in Diagnostic Procedures.

[Antibody](#) | [ELISA Kits](#) | [Protein](#) | [Reagents](#)