

ITGB6 (PT0428R) PT™ Rabbit mAb

CatalogNo: YM8270 **Recombinant** 

Key Features

Host Species

- Rabbit

Reactivity

- Human, Mouse, Rat

Applications

- WB, IHC, IF, IP, ELISA

MW

- 86kD (Calculated)
- 86kD (Observed)

Isotype

- IgG, Kappa

Storage

Storage* -15°C to -25°C/1 year (Do not lower than -25°C)

Formulation PBS, 50% glycerol, 0.05% Proclin 300, 0.05% BSA

Recommended Dilution Ratios

IHC 1:2000-1:10000

WB 1:1000-1:5000

IF 1:200-1:1000

ELISA 1:5000-1:20000

IP 1:50-1:200

Basic Information

Clonality Monoclonal

Clone Number PT0428R

Immunogen Information

Specificity Endogenous

Target Information

Gene name ITGB6

Protein Name Integrin beta-6

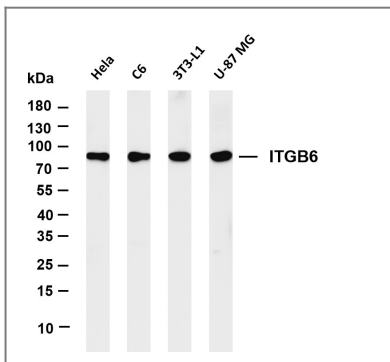
Organism	Gene ID	UniProt ID
Human	3694;	P18564;
Mouse	16420;	Q9Z0T9;
Rat		Q6AYF4;

Cellular Localization Membrane

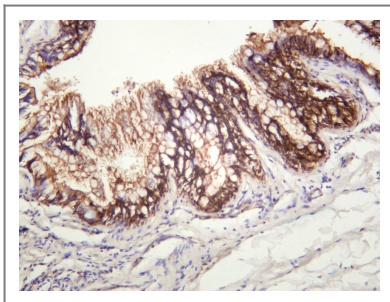
Tissue specificity Keratinocyte,Pancreas,Skeletal muscle,

Function Function: Integrin alpha-V/beta-6 is a receptor for fibronectin and cytotactin. It recognizes the sequence R-G-D in its ligands.,similarity:Belongs to the integrin beta chain family.,similarity:Contains 1 VWFA domain.,subunit:Heterodimer of an alpha and a beta subunit. Beta-6 associates with alpha-V. Interacts with FLNB. Alpha-V/beta-6 binds to foot-and-mouth disease virus (FMDV) VP1 protein, coxsackievirus A9, coxsackievirus B1 capsid proteins and acts as a receptor for these viruses.,

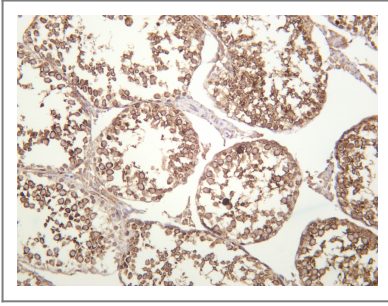
Validation Data



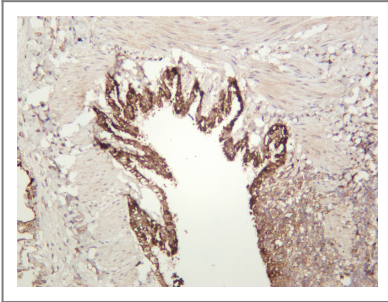
Various whole cell lysates were separated by 4-20% SDS-PAGE, and the membrane was blotted with anti-ITGB6 antibody. The HRP-conjugated Goat anti-Rabbit IgG(H + L) antibody was used to detect the antibody. Lane 1: HeLa Lane 2: C6 Lane 3: 3T3-L1 Lane 4: U-87 MG Predicted band size: 86kDa Observed band size: 86kDa



Human colon carcinoma was stained with anti-ITGB6 rabbit antibody



Mouse testis was stained with anti-ITGB6 rabbit antibody



Rat lung was stained with anti-ITGB6 rabbit antibody

| Contact information

Orders: order.cn@immunoway.com
Support: support.cn@immunoway.com
Telephone: 400-8787-807(China)
Website: <http://www.immunoway.com.cn>
Address: 2200 Ringwood Ave San Jose, CA 95131 USA



Please scan the QR code
to access additional
product information:
ITGB6 (PT0428R)
PT™ Rabbit mAb

For Research Use Only. Not for Use in Diagnostic Procedures.

[Antibody](#) | [ELISA Kits](#) | [Protein](#) | [Reagents](#)