

## Paxillin (Phospho Tyr118) (PT0675R) PT® Rabbit mAb

CatalogNo: YM8268 **Recombinant** 

### Key Features

#### Host Species

- Rabbit

#### Reactivity

- Human, Mouse, Rat

#### Applications

- WB, IF, IP, ELISA

#### MW

- 65kD (Calculated)
- 65kD (Observed)

#### Isotype

- IgG, Kappa

### Recommended Dilution Ratios

**WB 1:2000-1:10000**

**IF 1:200-1:1000**

**ELISA 1:5000-1:20000**

**IP 1:50-1:200**

### Storage

**Storage\*** -15°C to -25°C/1 year (Do not lower than -25°C)

**Formulation** PBS, 50% glycerol, 0.05% Proclin 300, 0.05% BSA

### Basic Information

**Clonality** Monoclonal

**Clone Number** PT0675R

### Immunogen Information

**Specificity** This antibody detects endogenous levels of Paxillin only when phosphorylated at Tyr118. This antibody does not recognize phosphorylated at other sites.

## Target Information

Gene name PXN

Protein Name Paxillin

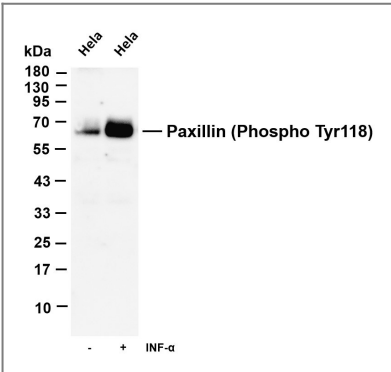
| Organism | Gene ID                 | UniProt ID              |
|----------|-------------------------|-------------------------|
| Human    | <a href="#">5829;</a>   | <a href="#">P49023;</a> |
| Mouse    | <a href="#">19303;</a>  | <a href="#">Q8VI36;</a> |
| Rat      | <a href="#">360820;</a> | <a href="#">Q66H76;</a> |

Cellular Localization Cytoplasm, Nucleus

Tissue specificity Brain,Epithelium,Lung,Placenta,T-cell,Uterus,

Function: Cytoskeletal protein involved in actin-membrane attachment at sites of cell adhesion to the extracellular matrix (focal adhesion).,PTM:Phosphorylated on tyrosine residues during integrin-mediated cell adhesion, embryonic development, fibroblast transformation and following stimulation of cells by mitogens.,similarity:Belongs to the paxillin family.,similarity:Contains 3 LIM zinc-binding domains.,similarity:Contains 4 LIM zinc-binding domains.,subunit:Binds in vitro to vinculin as well as to the SH3 domain of c-SRC and, when tyrosine phosphorylated, to the SH2 domain of V-CRK. Isoform beta binds to focal adhesion kinase but weakly to vinculin. Isoform gamma binds to vinculin but only weakly to focal adhesion kinase. Interacts with GIT1, NUDT16L1/SDOS, PARVA and TGFB111. Component of cytoplasmic complexes, which also contain GIT1, ARHGEF6 and PAK1 (By similarity). Binds ASAP2. Interacts with unphosphorylated ITGA4. Interacts with RNF5.,

## Validation Data



Various whole cell lysates were separated by 4-20% SDS-PAGE, and the membrane was blotted with anti-Paxillin (Phospho Tyr118) antibody. The HRP-conjugated Goat anti-Rabbit IgG(H + L) antibody was used to detect the antibody. Lane 1: HeLa Lane 2: HeLa Serum starvation for 4 hours then treated with EGF (200 ng/mL) for 15 minutes Predicted band size: 65kDa Observed band size: 65kDa

## Contact information

Orders: order.cn@immunoway.com  
Support: support.cn@immunoway.com  
Telephone: 400-8787-807(China)  
Website: <http://www.immunoway.com.cn>  
Address: 2200 Ringwood Ave San Jose, CA 95131 USA



Please scan the QR code  
to access additional  
product information:  
**Paxillin (Phospho  
Tyr118) (PT0675R)  
PT® Rabbit mAb**

---

For Research Use Only. Not for Use in Diagnostic Procedures.

[Antibody](#) | [ELISA Kits](#) | [Protein](#) | [Reagents](#)