

CD10 (PT0044R) PT™ Rabbit mAb

CatalogNo: YM8235 **Recombinant** 

Key Features

Host Species

- Rabbit

Reactivity

- Human, Mouse, Rat

Applications

- WB, IHC, IF, IP, ELISA

MW

- 86kD (Calculated)
- 100kD (Observed)

Isotype

- IgG, Kappa

Recommended Dilution Ratios

IHC 1:1000-1:4000

WB 1:2000-1:10000

IF 1:200-1:1000

ELISA 1:5000-1:20000

IP 1:50-1:200

Storage

Storage* -15°C to -25°C/1 year (Do not lower than -25°C)

Formulation PBS, 50% glycerol, 0.05% Proclin 300, 0.05% BSA

Basic Information

Clonality Monoclonal

Clone Number PT0044R

Immunogen Information

Specificity Endogenous

Target Information

Gene name MME EPN

Protein Name Neprilysin

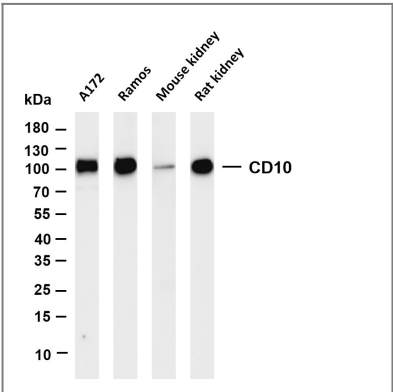
Organism	Gene ID	UniProt ID
Human	4311 ;	P08473 ;
Mouse	17380 ;	Q61391 ;
Rat	24590 ;	P07861 ;

Cellular Localization Membrane

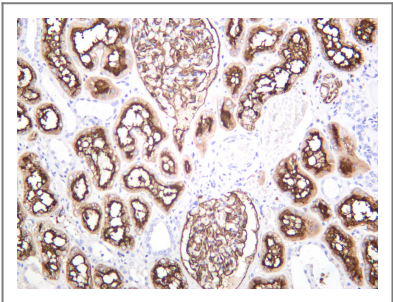
Tissue specificity Adrenal cortex,Brain,Kidney,Placenta,

Function Catalytic activity:Preferential cleavage of polypeptides between hydrophobic residues, particularly with Phe or Tyr at P1'.cofactor:Binds 1 zinc ion per subunit.,Disease:Important cell surface marker in the diagnostic of human acute lymphocytic leukemia.,enzyme regulation:Inhibited in a dose dependent manner by opiorphin.,Function:Thermolysin-like specificity, but is almost confined on acting on polypeptides of up to 30 amino acids. Biologically important in the destruction of opioid peptides such as Met- and Leu-enkephalins by cleavage of a Gly-Phe bond. Involved in the degradation of atrial natriuretic factor (ANF).,similarity:Belongs to the peptidase M13 family.,

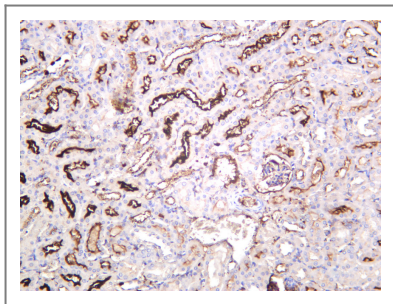
Validation Data



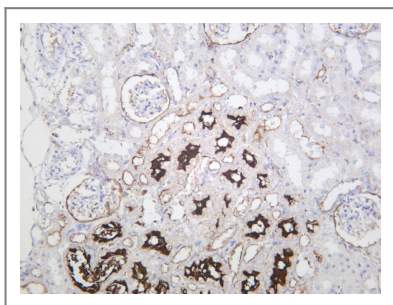
Various whole cell lysates were separated by 4-20% SDS-PAGE, and the membrane was blotted with anti-CD10 antibody. The HRP-conjugated Goat anti-Rabbit IgG(H + L) antibody was used to detect the antibody. Lane 1: A172 Lane 2: Romes Lane 3: Mouse kidney Lane 4: Rat kidney Predicted band size: 86kDa Observed band size: 100kDa



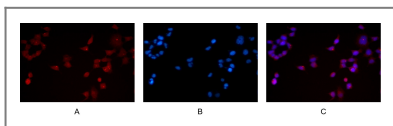
Human kidney was stained with anti-CD10 rabbit antibody



Mouse kidney was stained with anti-CD10 rabbit antibody



Rat kidney was stained with anti-CD10 rabbit antibody



Immunofluorescence analysis of HEK293. Picture A: CD10 antibody (red). Picture B: DAPI (blue). Picture C: Merge of A+B

Contact information

Orders: order.cn@immunoway.com
 Support: support.cn@immunoway.com
 Telephone: 400-8787-807(China)
 Website: <http://www.immunoway.com.cn>
 Address: 2200 Ringwood Ave San Jose, CA 95131 USA



Please scan the QR code
 to access additional
 product information:
CD10 (PT0044R)
PT™ Rabbit mAb

For Research Use Only. Not for Use in Diagnostic Procedures.

[Antibody](#) | [ELISA Kits](#) | [Protein](#) | [Reagents](#)