

Rab 5A (PT0309R) PT™ Rabbit mAb

CatalogNo: YM8182 **Recombinant** 

Key Features

Host Species

- Rabbit

Reactivity

- Human, Mouse, Rat,

Applications

- WB, IHC, IF, IP, ELISA

MW

- 24kD (Calculated)
24kD (Observed)

Isotype

- IgG, Kappa

Recommended Dilution Ratios

IHC 1:1000-1:4000

WB 1:1000-1:5000

IF 1:200-1:1000

ELISA 1:5000-1:20000

IP 1:50-1:200,

Storage

Storage* -15°C to -25°C/1 year (Do not lower than -25°C)

Formulation PBS, 50% glycerol, 0.05% Proclin 300, 0.05% BSA

Basic Information

Clonality Monoclonal

Clone Number PT0309R

Immunogen Information

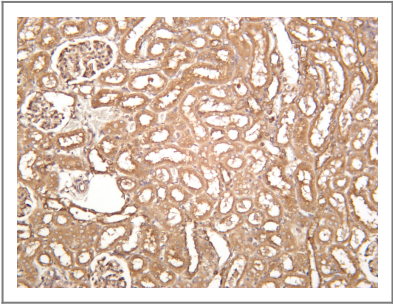
Sequence Ras-related protein Rab-5A

Specificity Endogenous

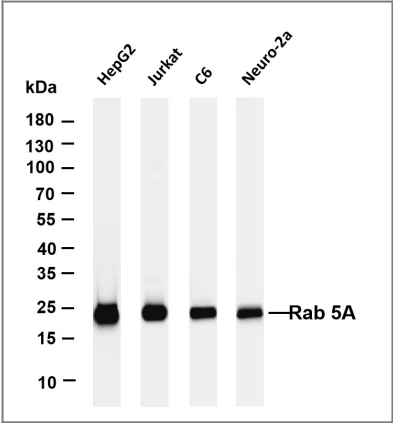
Target Information

Gene name	RAB5A		
Protein Name	Ras-related protein Rab-5A		
	Organism	Gene ID	UniProt ID
	Human	5868 ;	P20339 ;
	Mouse	271457 ;	Q9CQD1 ;
Cellular Localization	Cytoplasm, Membrane		
Tissue specificity	Brain,Cervix,Cervix carcinoma,Placenta,		
Function	enzyme regulation:Regulated by guanine nucleotide exchange factors (GEFs) which promote the exchange of bound GDP for free GTP.,Function:Required for the fusion of plasma membranes and early endosomes.,similarity:Belongs to the small GTPase superfamily. Rab family.,subcellular location:Enriched in stage I melanosomes.,subunit:Binds EEA1. Interacts with RIN1 and GAPVD1, which regulate its pathway, probably by acting as a GEF. Interacts with ALS2CL, UNC84B, ZFYVE20 and RUFY1. Interacts with SGSM1 and SGSM3.,		

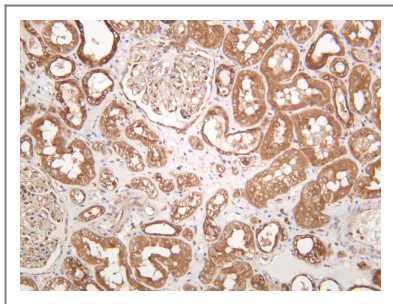
Validation Data



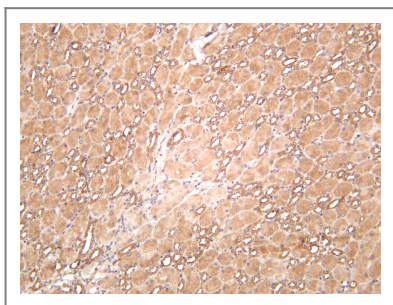
Rat kidney was stained with anti-Rab 5A rabbit antibody



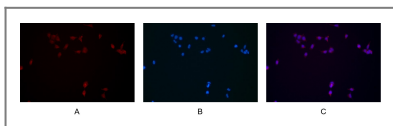
Various whole cell lysates were separated by 4-20% SDS-PAGE, and the membrane was blotted with anti-Rab 5A antibody. The HRP-conjugated Goat anti-Rabbit IgG(H + L) antibody was used to detect the antibody. Lane 1: HepG2 Lane 2: Jurkat Lane 3: C6 Lane 4: Neuro-2a Predicted band size: 24kDa Observed band size: 24kDa



Human kidney was stained with anti-Rab 5A rabbit antibody



Mouse kidney was stained with anti-Rab 5A rabbit antibody



Immunofluorescence analysis of HEK293. Picture A: Rab5 antibody (red). Picture B: DAPI (blue). Picture C: Merge of A+B

Contact information

Orders: order.cn@immunoway.com
 Support: support.cn@immunoway.com
 Telephone: 400-8787-807(China)
 Website: <http://www.immunoway.com.cn>
 Address: 2200 Ringwood Ave San Jose, CA 95131 USA



Please scan the QR code to access additional product information:
Rab 5A (PT0309R)
PT™ Rabbit mAb

For Research Use Only. Not for Use in Diagnostic Procedures.

[Antibody](#) | [ELISA Kits](#) | [Protein](#) | [Reagents](#)