

## TOMM20 (PT0287R) PT™ Rabbit mAb

CatalogNo: YM8164 **Recombinant** 

### Key Features

#### Host Species

- Rabbit

#### Reactivity

- Human, Mouse, Rat

#### Applications

- WB, IHC, IF, ELISA

#### MW

- 16kD (Calculated)  
16kD (Observed)

#### Isotype

- IgG, Kappa

### Storage

**Storage\*** -15°C to -25°C/1 year (Do not lower than -25°C)

**Formulation** PBS, 50% glycerol, 0.05% Proclin 300, 0.05% BSA

### Recommended Dilution Ratios

**IHC 1:100-1:500**

**WB 1:1000-1:5000**

**IF 1:200-1:1000**

**ELISA 1:5000-1:20000**

### Basic Information

**Clonality** Monoclonal

**Clone Number** PT0287R

### Immunogen Information

**Specificity** Endogenous

## Target Information

**Gene name** TOMM20

**Protein Name** Mitochondrial import receptor subunit TOM20 homolog

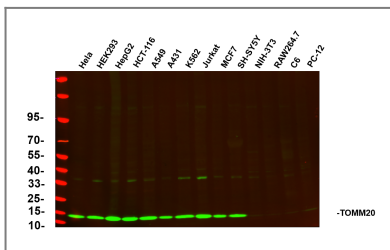
Organism	Gene ID	UniProt ID
Human	<a href="#">9804;</a>	<a href="#">Q15388;</a>
Mouse	<a href="#">67952;</a>	<a href="#">Q9DCC8;</a>
Rat	<a href="#">266601;</a>	<a href="#">Q62760;</a>

**Cellular Localization** Membranous

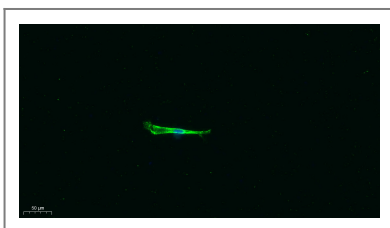
**Tissue specificity** Bone marrow,Brain,Cervix,Epithelium,Eye,Fibroblast,Pancreas

**Function** Function:Central component of the receptor complex responsible for the recognition and translocation of cytosolically synthesized mitochondrial preproteins. Together with tom22 functions as the transit peptide receptor at the surface of the mitochondrion outer membrane and facilitates the movement of preproteins into the tom40 translocation pore.,similarity:Belongs to the Tom20 family.,subunit:Forms part of the preprotein translocase complex of the outer mitochondrial membrane (TOM complex) which consists of at least 7 different proteins (TOMM5, TOMM6, TOMM7, TOMM20, TOMM22, TOMM40 and TOMM70). Interacts with TOM22.,

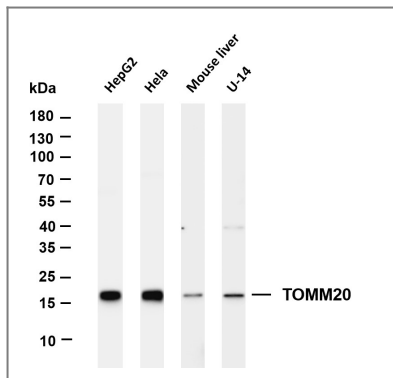
## Validation Data



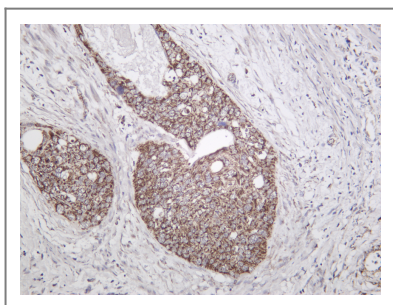
Various whole cell lysates were separated by 4-20% SDS-PAGE, and the primary antibody was used at 4°C, over night with a 1:5000 dilution . The Dylight 800-conjugated Goat anti-Rabbit antibody(Cat:RS23920) was used to detect the antibody. Lane1: HeLa - Human cervical cancer Lane2: HEK293 - Human normal embryonic kidney Lane3: HepG2 - Human hepatocellular carcinoma Lane4: HCT-116 - Human colon cancer Lane5: A549 - Human lung adenocarcinoma Lane6: A431 - Human skin squamous cell carcinoma Lane7: K562 - Human chronic myeloid leukemia Lane8: Jurkat - Human acute T cell leukemia cells Lane9: MCF7 - Human breast cancer Lane10: SH-SY5Y - Human neuroblastoma cells Lane11: NIH-3T3 - NIH mouse fibroblasts Lane12: RAW264.7 - Mouse mononuclear macrophage leukemia cells Lane13: C6 - Rat glioma cells Lane14: PC-12 - Pheochromocytoma in rats Predicted band size: 15kDa Observed band size: 15kDa



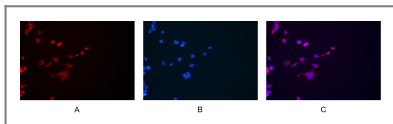
Immunofluorescence analysis of A549. 1,primary Antibody was diluted at 1:200(4°C overnight). 2, Goat Anti Rabbit IgG (H&L) - Alexa Fluor 488 Secondary antibody was diluted at 1:1000(room temperature, 50min).3, DAPI(blue) 10min.



Various whole cell lysates were separated by 4-20% SDS-PAGE, and the membrane was blotted with anti-TOMM20 antibody. The HRP-conjugated Goat anti-Rabbit IgG(H + L) antibody was used to detect the antibody. Lane 1: HepG2 Lane 2: HeLa Lane 3: Mouse liver Lane 4: U-14 Predicted band size: 16kDa Observed band size: 16kDa



Human cervical carcinoma was stained with Anti-TOMM20 rabbit antibody



Immunofluorescence analysis of HEK293. Picture A: TOMM20 antibody (red). Picture B: DAPI (blue). Picture C: Merge of A+B

## Contact information

Orders: [order.cn@immunoway.com](mailto:order.cn@immunoway.com)  
 Support: [support.cn@immunoway.com](mailto:support.cn@immunoway.com)  
 Telephone: 400-8787-807(China)  
 Website: <http://www.immunoway.com.cn>  
 Address: 2200 Ringwood Ave San Jose, CA 95131 USA



Please scan the QR code to access additional product information:  
**TOMM20 (PT0287R)**  
**PT™ Rabbit mAb**

For Research Use Only. Not for Use in Diagnostic Procedures.

[Antibody](#) | [ELISA Kits](#) | [Protein](#) | [Reagents](#)