

## p21 (PT0237R) PT™ Rabbit mAb

CatalogNo: YM8148 **Recombinant** 

### Key Features

#### Host Species

- Rabbit

#### Reactivity

- Human,Rat

#### Applications

- WB,IHC,IF,IP,ELISA

#### MW

- 18kD (Calculated)  
18kD (Observed)

#### Isotype

- IgG,Kappa

### Recommended Dilution Ratios

IHC 1:100-1:200

WB 1:1000-1:5000

IF 1:200-1:1000

ELISA 1:5000-1:20000

IP 1:50-1:200,

### Storage

**Storage\*** -15°C to -25°C/1 year(Do not lower than -25°C)

**Formulation** PBS, 50% glycerol, 0.05% Proclin 300, 0.05%BSA

### Basic Information

**Clonality** Monoclonal

**Clone Number** PT0237R

### Immunogen Information

**Specificity** Endogenous

## Target Information

**Gene name** CDKN1A CAP20 CDKN1 CIP1 MDA6 PIC1 SDI1 WAF1

**Protein Name** Cyclin-dependent kinase inhibitor 1

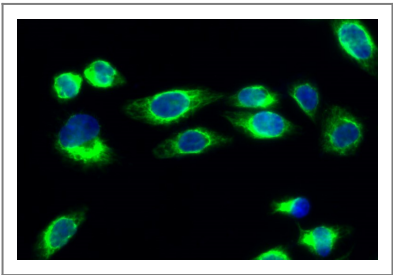
Organism	Gene ID	UniProt ID
Human	<a href="#">1026</a> ;	<a href="#">P38936</a> ;
Mouse	<a href="#">12575</a> ;	<a href="#">P39689</a> ;

**Cellular Localization** Nucleus

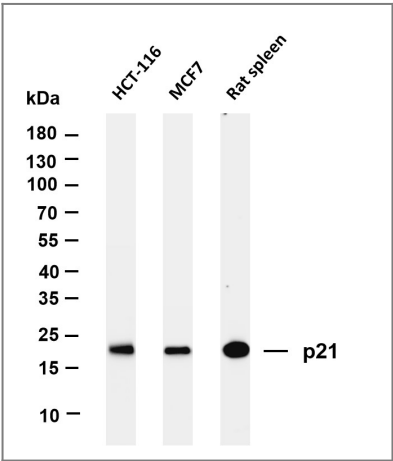
**Tissue specificity** Expressed in all adult tissues, with 5-fold lower levels observed in the brain.

**Function** Function:May be the important intermediate by which p53 mediates its role as an inhibitor of cellular proliferation in response to DNA damage. Binds to and inhibits cyclin-dependent kinase activity, preventing phosphorylation of critical cyclin-dependent kinase substrates and blocking cell cycle progression.,induction:By p53, mezerein (antileukemic compound) and interferon beta.,PTM:Phosphorylation of Thr-145 by Akt or of Ser-146 by PKC impairs binding to PCNA.,similarity:Belongs to the CDI family.,tissue specificity:Expressed in all adult human tissues, with 5-fold lower levels observed in the brain.,

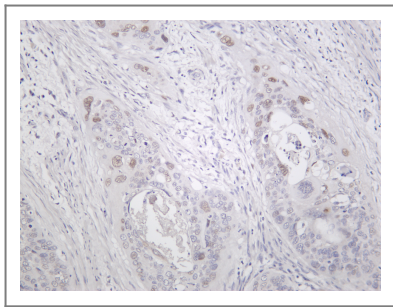
## Validation Data



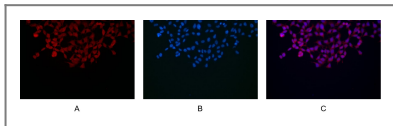
Immunofluorescence analysis of Hela cell. 1,p21 Antibody(green) was diluted at 1:200(4° overnight). 2, Goat Anti Rabbit Alexa Fluor 488 Catalog:RS3211 was diluted at 1:1000(room temperature, 50min). 3 DAPI(blue) 10min.



Various whole cell lysates were separated by 4-20% SDS-PAGE, and the membrane was blotted with anti-p21 antibody. The HRP-conjugated Goat anti-Rabbit IgG(H + L) antibody was used to detect the antibody. Lane 1: HCT-116 Lane 2: MCF7 Lane 3: Rat spleen Predicted band size: 18kDa Observed band size: 18kDa



Human cervical carcinoma was stained with Anti-p21 rabbit antibody



Immunofluorescence analysis of HEK293. Picture A: p21 antibody (red).  
Picture B: DAPI (blue). Picture C: Merge of A+B

## Contact information

Orders: [order.cn@immunoway.com](mailto:order.cn@immunoway.com)  
Support: [support.cn@immunoway.com](mailto:support.cn@immunoway.com)  
Telephone: 400-8787-807(China)  
Website: <http://www.immunoway.com.cn>  
Address: 2200 Ringwood Ave San Jose, CA 95131 USA



Please scan the QR code  
to access additional  
product information:  
**p21 (PT0237R) PT™  
Rabbit mAb**

For Research Use Only. Not for Use in Diagnostic Procedures.

[Antibody](#) | [ELISA Kits](#) | [Protein](#) | [Reagents](#)