

## Bad (PT0219R) PT™ Rabbit mAb

CatalogNo: YM8140 **Recombinant** 

### Key Features

#### Host Species

- Rabbit

#### Reactivity

- Human, Mouse, Rat,

#### Applications

- WB, IHC, IF, IP, ELISA

#### MW

- 18kD (Calculated)  
23kD (Observed)

#### Isotype

- IgG, Kappa

### Recommended Dilution Ratios

IHC 1:200-1:1000

WB 1:1000-1:5000

IF 1:200-1:1000

ELISA 1:5000-1:20000

IP 1:50-1:200,

### Storage

**Storage\*** -15°C to -25°C/1 year (Do not lower than -25°C)**Formulation** PBS, 50% glycerol, 0.05% Proclin 300, 0.05% BSA

### Basic Information

**Clonality** Monoclonal**Clone Number** PT0219R

### Immunogen Information

**Sequence** Bcl2 antagonist of cell death**Specificity** Endogenous

## | Target Information

**Gene name** BAD

**Protein Name** BAD

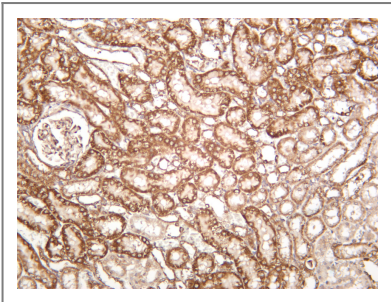
Organism	Gene ID	UniProt ID
Human	<a href="#">572;</a>	<a href="#">Q92934;</a>
Mouse	<a href="#">12015;</a>	<a href="#">Q61337;</a>
Rat	<a href="#">64639;</a>	<a href="#">Q35147;</a>

**Cellular Localization** Cytoplasm

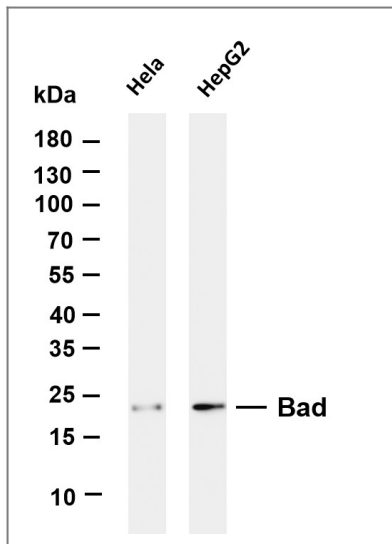
**Tissue specificity** Expressed in a wide variety of tissues.

**Function** Domain: Intact BH3 motif is required by BIK, BID, BAK, BAD and BAX for their pro-apoptotic activity and for their interaction with anti-apoptotic members of the Bcl-2 family. Function: Promotes cell death. Successfully competes for the binding to Bcl-X(L), Bcl-2 and Bcl-W, thereby affecting the level of heterodimerization of these proteins with BAX. Can reverse the death repressor activity of Bcl-X(L), but not that of Bcl-2 (By similarity). Appears to act as a link between growth factor receptor signaling and the apoptotic pathways. online information: Bcl 2-associated death promoter entry, PTM: Phosphorylated on one or more of Ser-75, Ser-99, Ser-118 and Ser-134 in response to survival stimuli, which blocks its pro-apoptotic activity. Phosphorylation on Ser-99 or Ser-75 promotes heterodimerization with 14-3-3 proteins. This interaction then facilitates the phosphorylation at Ser-118, a site within the BH3 motif, leading to the release of Bcl-X(L) and the promotion of cell survival. Ser-99 is the major site of AKT/PKB phosphorylation, Ser-118 the major site of protein kinase A (CAPK) phosphorylation. similarity: Belongs to the Bcl-2 family. subcellular location: Upon phosphorylation, locates to the cytoplasm. subunit: Forms heterodimers with the anti-apoptotic proteins, Bcl-X(L), Bcl-2 and Bcl-W. Also binds protein S100A10 (By similarity). The Ser-75/Ser-99 phosphorylated form binds 14-3-3 proteins. tissue specificity: Expressed in a wide variety of tissues.

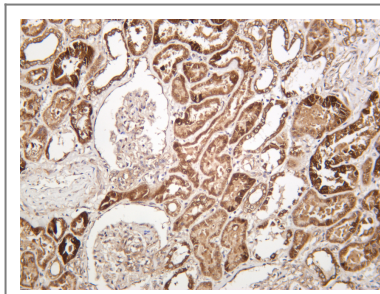
## | Validation Data



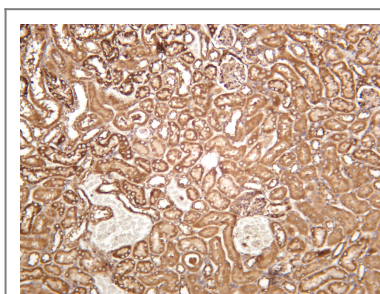
Rat kidney was stained with anti-Bad rabbit antibody



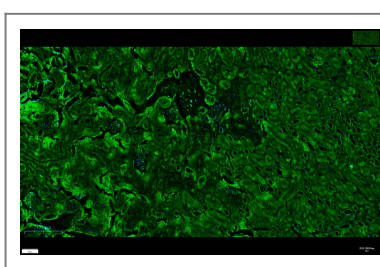
Various whole cell lysates were separated by 4-20% SDS-PAGE, and the membrane was blotted with anti-Bad antibody. The HRP-conjugated Goat anti-Rabbit IgG(H + L) antibody was used to detect the antibody. Lane 1: HeLa Lane 2: HepG2 Predicted band size: 18kDa Observed band size: 23kDa



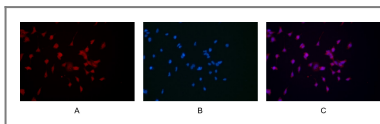
Human kidney was stained with anti-Bad rabbit antibody



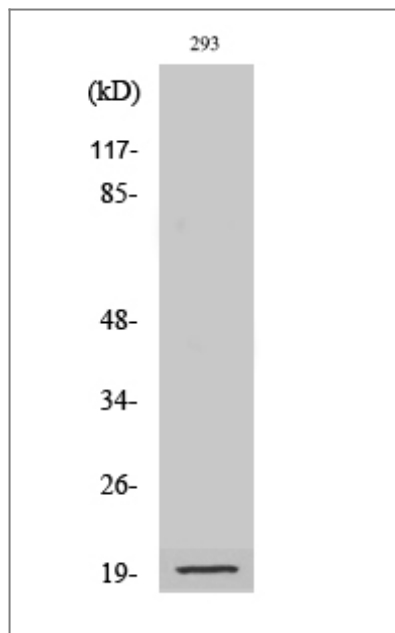
Mouse kidney was stained with anti-Bad rabbit antibody



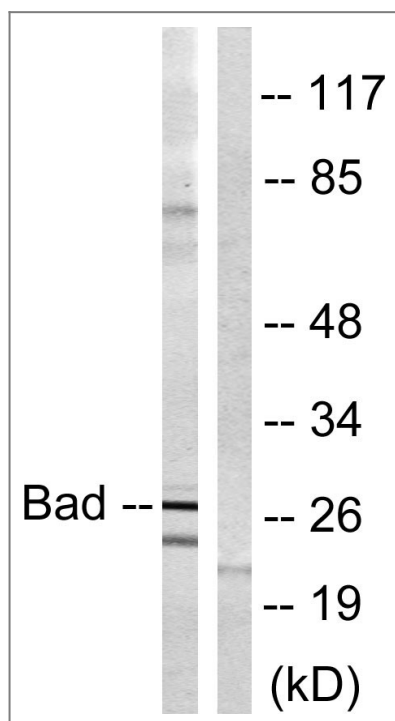
Mouse kidney was stained with anti-Bad rabbit antibody



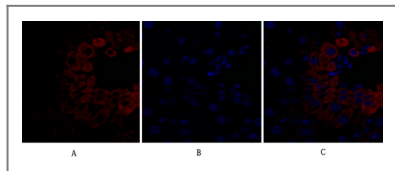
Immunofluorescence analysis of HEK293. Picture A: Bad antibody (red). Picture B: DAPI (blue). Picture C: Merge of A+B



Western Blot analysis of various cells using Cleaved-Bad (D71) Antibody



Western blot analysis of lysates from mouse liver, using BAD Antibody. The lane on the right is blocked with the synthesized peptide.



Immunofluorescence analysis of mouse-liver tissue. 1,Bad Antibody(red) was diluted at 1:200(4°C,overnight). 2, Cy3 labeled Secondary antibody was diluted at 1:300(room temperature, 50min).3, Picture B: DAPI(blue) 10min. Picture A:Target. Picture B: DAPI. Picture C: merge of A+B

## Contact information

Orders: order.cn@immunoway.com  
 Support: support.cn@immunoway.com  
 Telephone: 400-8787-807(China)  
 Website: <http://www.immunoway.com.cn>  
 Address: 2200 Ringwood Ave San Jose, CA 95131 USA



Please scan the QR code to access additional product information:  
**Bad (PT0219R) PT™**  
**Rabbit mAb**

