

# $\alpha$ Tubulin (PT0200R) PT™ Rabbit mAb-Loading Control

CatalogNo: YM8126 **Recombinant** 

## Key Features

### Host Species

- Rabbit

### Reactivity

- Human, Mouse, Rat

### Applications

- WB, IHC, IF, ELISA

### MW

- 50kD (Calculated)  
50kD (Observed)

### Isotype

- IgG, Kappa

## Storage

**Storage\*** -15°C to -25°C/1 year (Do not lower than -25°C)

**Formulation** PBS, 50% glycerol, 0.05% Proclin 300, 0.05% BSA

## Recommended Dilution Ratios

IHC 1:200-1:1000

WB 1:1000-1:5000

IF 1:200-1:1000

ELISA 1:5000-1:20000

## Basic Information

**Clonality** Monoclonal

**Clone Number** PT0200R

## Immunogen Information

**Specificity** Endogenous

## Target Information

**Gene name** TUBA1B

**Protein Name** Tubulin alpha-1B chain (Alpha-tubulin ubiquitous) (Tubulin K-alpha-1) (Tubulin alpha-ubiquitous chain)

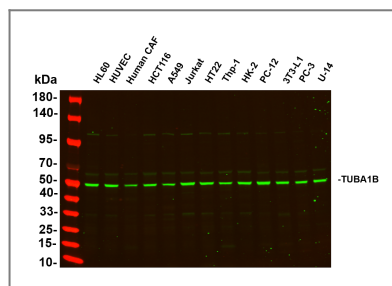
Organism	Gene ID	UniProt ID
Human	<a href="#">7277</a> ;	<a href="#">P68363</a> ;
Mouse		<a href="#">P05213</a> ;
Rat		<a href="#">Q6P9V9</a> ;

**Cellular Localization** Cytoplasm

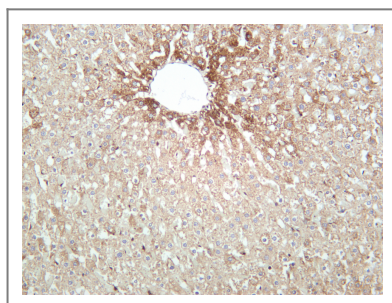
**Tissue specificity** Brain,Cajal-Retzius cell,Colon,Embryonic kidney,Eye,Fetal brain cortex,Keratinocyte

**Function** Function:Tubulin is the major constituent of microtubules. It binds two moles of GTP, one at an exchangeable site on the beta chain and one at a non-exchangeable site on the alpha-chain.,PTM:Undergoes a tyrosination/detyrosination cycle, the cyclic removal and re-addition of a C-terminal tyrosine residue by the enzymes tubulin tyrosine carboxypeptidase (TTCP) and tubulin tyrosine ligase (TTL), respectively.,similarity:Belongs to the tubulin family.,subunit:Dimer of alpha and beta chains.,

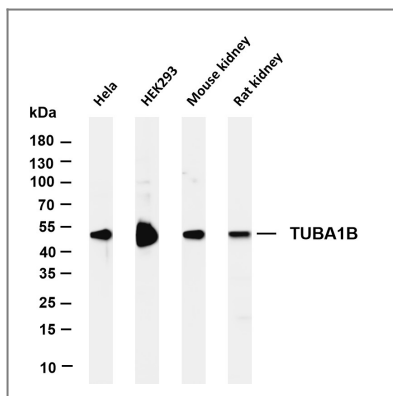
## Validation Data



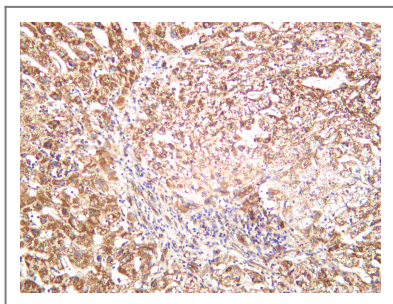
Various whole cell lysates were separated by 4-20% SDS-PAGE, and the primary antibody was used at 4°C, over night with a 1:2500 dilution . The Dylight 800-conjugated Goat anti-Rabbit antibody(Cat:RS23920) was used to detect the antibody. Lane1: HL60 - Human promyelocytic leukemia cell Lane2: HUVEC - Human umbilical vein endothelial cell Lane3: Human CAF - Human cancer-associated fibroblast Lane4: HCT116 - Human colorectal carcinoma Lane5: A549 - Human lung carcinoma Lane6: Jurkat - Human T lymphocyte leukemia Lane7: HT22 - Mouse hippocampal neuronal Lane8: Thp-1 - Human monocytic leukemia Lane9: HK-2 - Human proximal tubular epithelial Lane10: PC-12 - Rat adrenal pheochromocytoma Lane11: 3T3-L1 - Mouse embryonic fibroblast Lane12: PC-3 - Human prostate adenocarcinoma Lane13: U-14 - Mouse cervical carcinoma Predicted band size: 52kDa Observed band size: 52kDa



Rat liver was stained with anti-TUBA1B rabbit antibody



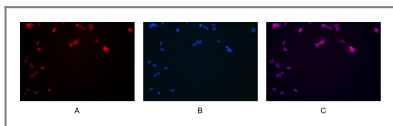
Various whole cell lysates were separated by 4-20% SDS-PAGE, and the membrane was blotted with anti-TUBA1B antibody. The HRP-conjugated Goat anti-Rabbit IgG(H + L) antibody was used to detect the antibody. Lane 1: HeLa Lane 2: HEK293 Lane 3: Mouse kidney Lane 4: Rat kidney Predicted band size: 50kDa Observed band size: 50kDa



Human liver was stained with anti-TUBA1B rabbit antibody



Human prostate was stained with anti-TUBA1B rabbit antibody



Immunofluorescence analysis of HEK293. Picture A: TUBA1B antibody (red). Picture B: DAPI (blue). Picture C: Merge of A+B

## Contact information

Orders: [order.cn@immunoway.com](mailto:order.cn@immunoway.com)  
 Support: [support.cn@immunoway.com](mailto:support.cn@immunoway.com)  
 Telephone: 400-8787-807(China)  
 Website: <http://www.immunoway.com.cn>  
 Address: 2200 Ringwood Ave San Jose, CA 95131 USA



Please scan the QR code to access additional product information:  
**α Tubulin (PT0200R)**  
**PT™ Rabbit mAb-Loading Control**