

## KAP1 (PT0192R) PT™ Rabbit mAb

CatalogNo: YM8120 **Recombinant** 

### Key Features

#### Host Species

- Rabbit

#### Reactivity

- Human, Mouse, Rat

#### Applications

- WB, IHC, IF, IP, ELISA

#### MW

- 89kD (Calculated)  
110kD (Observed)

#### Isotype

- IgG, Kappa

### Recommended Dilution Ratios

IHC 1:200-1:1000

WB 1:1000-1:5000

IF 1:200-1:1000

ELISA 1:5000-1:20000

IP 1:50-1:200,

### Storage

**Storage\*** -15°C to -25°C/1 year (Do not lower than -25°C)

**Formulation** PBS, 50% glycerol, 0.05% Proclin 300, 0.05% BSA

### Basic Information

**Clonality** Monoclonal

**Clone Number** PT0192R

### Immunogen Information

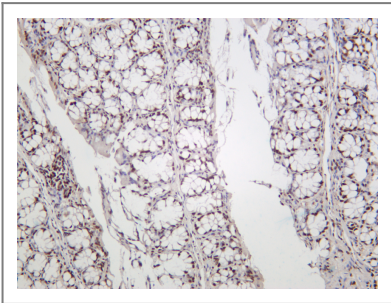
**Sequence** TIF1β (Ser824)

**Specificity** Endogenous

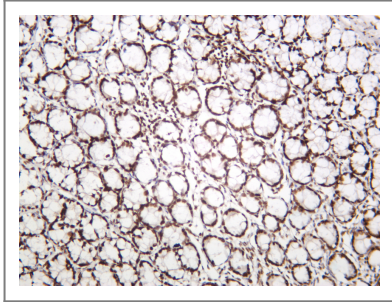
## | Target Information

Protein Name	TRIM28 KAP1 RNF96 TIF1B		
	Organism	Gene ID	UniProt ID
	Human	<a href="#">10155;</a>	<a href="#">Q13263;</a>
	Mouse	<a href="#">21849;</a>	<a href="#">Q62318;</a>
	Rat	<a href="#">116698;</a>	<a href="#">O08629;</a>
Cellular Localization	Nucleus		
Tissue specificity	Expressed in all tissues tested including spleen, thymus, prostate, testis, ovary, small intestine, colon and peripheral blood leukocytes.		
Function	Domain:Contains one Pro-Xaa-Val-Xaa-Leu (PxVxL) motif, which is required for interaction with chromoshadow domains. This motif requires additional residues -7, -6, +4 and +5 of the central Val which contact the chromoshadow domain.,Domain:The HP1 box is both necessary and sufficient for HP1 binding. The RING finger domain and the B-box domains mediate interaction with CEBPB. The PHD domain enhances the CEBPB transcriptional activity.,Function:Forms a complex with a KRAB-domain transcription factor and increases the efficiency of KRAB-mediated repression. Silences transcription through an interaction with HP1 proteins. Acts as a corepressor of transcription for the KRAB zinc finger proteins and as a moderator of the repression activity. May play a role as a coactivator for CEBPB and NR3C1 in the transcriptional activation of the Alpha-1-acid glycoprotein gene.,PTM:Phosphorylated upon DNA damage, probably by ATM or ATR.,similarity:Belongs to the TRIM/RBCC family.,similarity:Contains 1 bromo domain.,similarity:Contains 1 PHD-type zinc finger.,similarity:Contains 1 RING-type zinc finger.,similarity:Contains 2 B box-type zinc fingers.,subcellular location:Associated with centromeric heterochromatin during cell differentiation through CBX1.,subunit:Associated with HP1 alpha (CBX5), beta (CBX1) and gamma (CBX3) in interphase nuclei (By similarity). Interacts with ZNF382; enhances ZNF382 transcriptional repressor activity (By similarity). Interacts with CEBPB and NR3C1 (By similarity). Interacts with NCOR1 and CHD3. Interacts with SETDB1, ZFP53 and ZFP68. Interacts directly with CBX5 via the PxVxL motif.,		

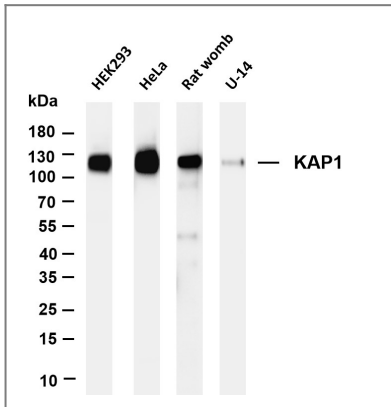
## | Validation Data



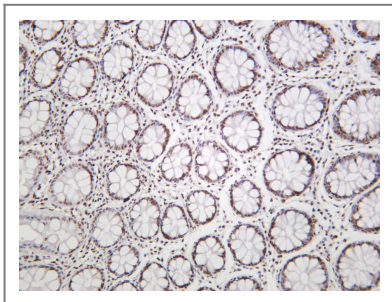
Mouse colon was stained with anti-KAP1 rabbit antibody



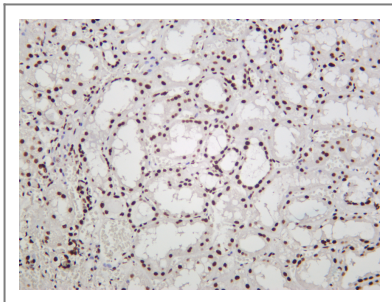
Rat colon was stained with anti-KAP1 rabbit antibody



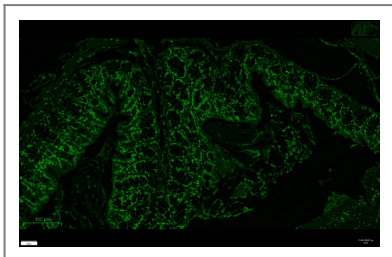
Various whole cell lysates were separated by 4-20% SDS-PAGE, and the membrane was blotted with anti-KAP1 antibody. The HRP-conjugated Goat anti-Rabbit IgG(H + L) antibody was used to detect the antibody. Lane 1: HEK293 Lane 2: HeLa Lane 3: Rat womb Lane 4: U-14 Predicted band size: 89kDa Observed band size: 110kDa



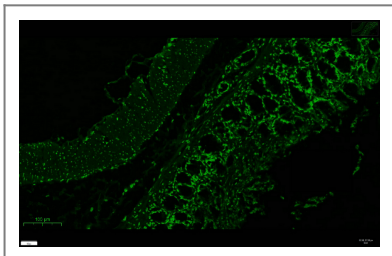
Human colon was stained with anti-KAP1 rabbit antibody



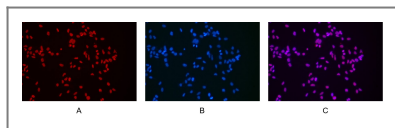
Human kidney was stained with anti-KAP1 rabbit antibody



Mouse colon was stained with anti-KAP1 rabbit antibody



Rat colon was stained with anti-KAP1 rabbit antibody



Immunofluorescence analysis of HEK293. Picture A: KAP1 antibody (red). Picture B: DAPI (blue). Picture C: Merge of A+B

## Contact information

Orders: [order.cn@immunoway.com](mailto:order.cn@immunoway.com)  
Support: [support.cn@immunoway.com](mailto:support.cn@immunoway.com)  
Telephone: 400-8787-807(China)  
Website: <http://www.immunoway.com.cn>  
Address: 2200 Ringwood Ave San Jose, CA 95131 USA



Please scan the QR code  
to access additional  
product information:  
**KAP1 (PT0192R)**  
**PT™ Rabbit mAb**

For Research Use Only. Not for Use in Diagnostic Procedures.

[Antibody](#) | [ELISA Kits](#) | [Protein](#) | [Reagents](#)