

## Cyclin E1 (PT0164R) PT™ Rabbit mAb

CatalogNo: YM8098 **Recombinant** 

**★IHC**

### Key Features

#### Host Species

- Rabbit

#### Reactivity

- Human, Mouse, Rat, Pig

#### Applications

- WB, IHC, IF, IP, ELISA

#### MW

- 47kD (Calculated)  
47kD (Observed)

#### Isotype

- IgG, Kappa

### Storage

**Storage\*** -15°C to -25°C/1 year (Do not lower than -25°C)

**Formulation** PBS, 50% glycerol, 0.05% Proclin 300, 0.05% BSA

### Recommended Dilution Ratios

**IHC 1:400-1000**

**WB 1:1000-5000**

**IF 1:200-1000**

**ELISA 1:5000-20000**

**IP 1:50-200**

### Basic Information

**Clonality** Monoclonal

**Clone Number** PT0164R

### Immunogen Information

**Immunogen** The specific immunogen used to produce this antibody is proprietary information.

**Specificity** Endogenous

## Target Information

**Gene name** CCNE1

**Protein Name** G1/S-specific cyclin-E1

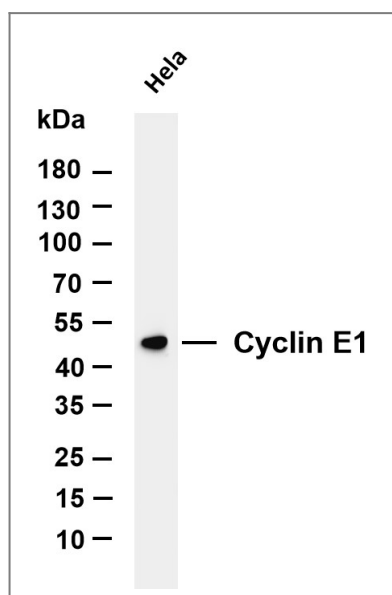
Organism	Gene ID	UniProt ID
Human	<a href="#">898;</a>	<a href="#">P24864;</a>
Mouse	<a href="#">12447;</a>	<a href="#">Q61457;</a>
Rat		<a href="#">P39949;</a>

**Cellular Localization** Nuclear

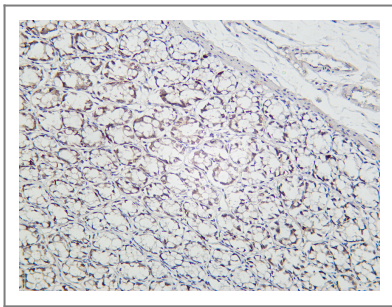
**Tissue specificity** Highly expressed in testis and placenta. Low levels in bronchial epithelial cells.

**Function** Function:Essential for the control of the cell cycle at the G1/S (start) transition. ,PTM:Phosphorylation of Thr-395 by GSK3 and of Ser-399 by CDK2 accelerates degradation via the ubiquitin proteasome pathway. Phosphorylated upon DNA damage , probably by ATM or ATR. ,similarity:Belongs to the cyclin family. Cyclin E subfamily. ,subunit:Interacts with a member of the CDK2/CDK protein kinases to form a serine/threonine kinase holoenzyme complex. The cyclin subunit imparts substrate specificity to the complex. Interacts with retinoblastoma binding protein 3 and retinoblastoma-like protein 1. Found in a complex with CDK2 , CABLES1 and CCNA1 (By similarity) . Part of a complex consisting of UHRF2 , CDK2 and CCNE1. ,tissue specificity:Highly expressed in testis and placenta. Low levels in bronchial epithelial cells. ,

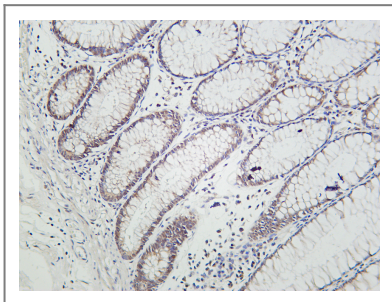
## Validation Data



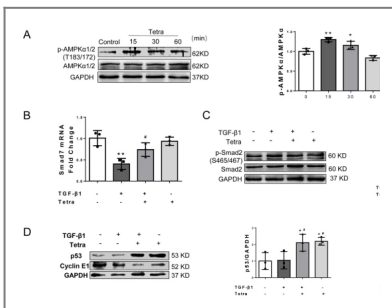
Various whole cell lysates were separated by 4-20% SDS-PAGE, and the membrane was blotted with anti-Cyclin E1 antibody. The HRP-conjugated Goat anti-Rabbit IgG (H + L) antibody was used to detect the antibody. Lane 1: HeLa Predicted band size: 47kDa Observed band size: 47kDa



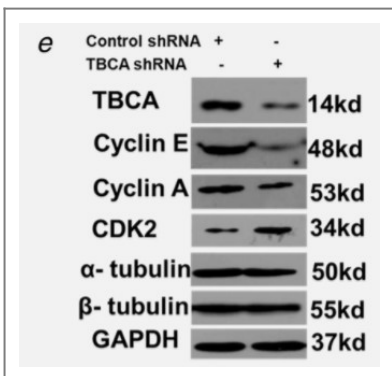
Rat colon was stained with Anti-Cyclin E1 rabbit antibody



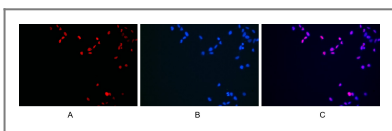
Human colon was stained with Anti-Cyclin E1 rabbit antibody



Gao, L., Wang, Ly., Liu, Zq. et al. TNAP inhibition attenuates cardiac fibrosis induced by myocardial infarction through deactivating TGF- $\beta$ 1/Smads and activating P53 signaling pathways. *Cell Death Dis* 11, 44 (2020)



Zhang, Peng, et al. "Tubulin cofactor A functions as a novel positive regulator of ccRCC progression, invasion and metastasis." *International journal of cancer* 133.12 (2013): 2801-2811.



Immunofluorescence analysis of HEK293. Picture A: Cyclin E1 antibody (red). Picture B: DAPI (blue). Picture C: Merge of A+B

## Contact information

Orders: order.cn@immunoway.com  
 Support: support.cn@immunoway.com  
 Telephone: 400-8787-807(China)  
 Website: <http://www.immunoway.com.cn>  
 Address: 2200 Ringwood Ave San Jose, CA 95131 USA



Please scan the QR code to access additional product information:  
**Cyclin E1 (PT0164R)**  
**PT™ Rabbit mAb**

