

## IFITM3 (PT0253R) PT™ Rabbit mAb

CatalogNo: YM8092 **Recombinant** 

### Key Features

#### Host Species

- Rabbit

#### Reactivity

- Human, Mouse, Rat

#### Applications

- WB, IHC, IF, ELISA

#### MW

- 14kD (Calculated)  
14kD (Observed)

#### Isotype

- IgG, Kappa

### Recommended Dilution Ratios

**IHC 1:200-1000****WB 1:1000-5000****IF 1:200-1000****ELISA 1:5000-20000**

### Storage

**Storage\*** -15°C to -25°C/1 year (Do not lower than -25°C)**Formulation** PBS, 50% glycerol, 0.05% Proclin 300, 0.05% BSA

### Basic Information

**Clonality** Monoclonal**Clone Number** PT0253R

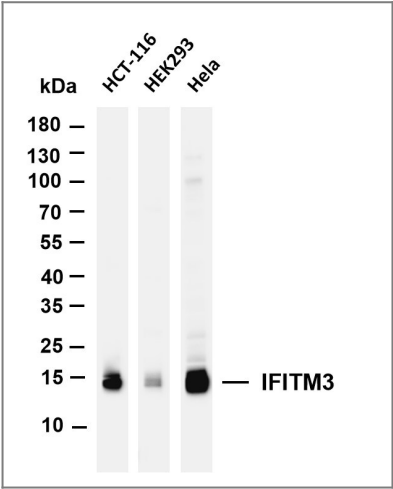
### Immunogen Information

**Specificity** Endogenous

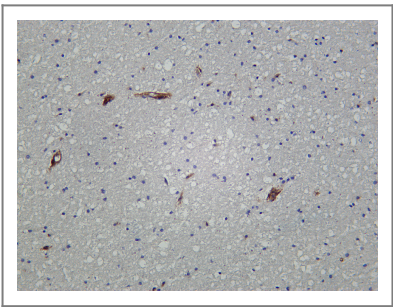
## Target Information

Gene name	IFITM3		
Protein Name	Interferon-induced transmembrane protein 3		
	Organism	Gene ID	UniProt ID
	Human	<a href="#">10410</a> ;	<a href="#">Q01628</a> ;
	Mouse		<a href="#">Q9CQW9</a> ;
Cellular Localization	Membranous		
Tissue specificity	Brain,Cervix,Vascular endothelial cell,		
Function	induction:By alpha and gamma interferons.,similarity:Belongs to the CD225 family.,		

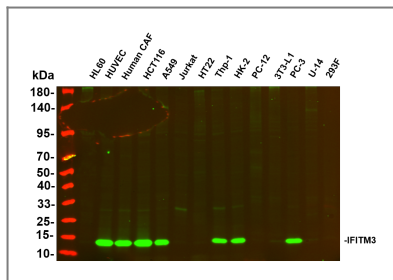
## Validation Data



Various whole cell lysates were separated by 4-20% SDS-PAGE, and the membrane was blotted with anti-IFITM3 antibody. The HRP-conjugated Goat anti-Rabbit IgG(H + L) antibody was used to detect the antibody. Lane 1: HCT-116 Lane 2: HEK293 Lane 3: HeLa Predicted band size: 14kDa Observed band size: 14kDa



Human brain was stained with Anti-IFITM3 rabbit antibody



Various whole cell lysates were separated by 4-20% SDS-PAGE, and the primary antibody was used at 4°C, over night with a 1:2500 dilution. The Dylight 800-conjugated Goat anti-Rabbit antibody (Cat:RS23920) was used to detect the antibody. Lane1: HL60 - Human promyelocytic leukemia cell Lane2: HUVEC - Human umbilical vein endothelial cell Lane3: Human CAF - Human cancer-associated fibroblast Lane4: HCT116 - Human colorectal carcinoma Lane5: A549 - Human lung carcinoma Lane6: Jurkat - Human T lymphocyte leukemia Lane7: HT22 - Mouse hippocampal neuronal Lane8: Thp-1 - Human monocytic leukemia Lane9: HK-2 - Human proximal tubular epithelial Lane10: PC-12 - Rat adrenal pheochromocytoma Lane11: 3T3-L1 - Mouse embryonic fibroblast Lane12: PC-3 - Human prostate adenocarcinoma Lane13: U-14 - Mouse cervical carcinoma Lane14: 293F - HEK293 derivative, adapted for suspension culture Predicted band size: 14kDa Observed band size: 14kDa

## Contact information

Orders: [order.cn@immunoway.com](mailto:order.cn@immunoway.com)  
 Support: [support.cn@immunoway.com](mailto:support.cn@immunoway.com)  
 Telephone: 400-8787-807(China)  
 Website: <http://www.immunoway.com.cn>  
 Address: 2200 Ringwood Ave San Jose, CA 95131 USA



Please scan the QR code to access additional product information:  
**IFITM3 (PT0253R)**  
**PT™ Rabbit mAb**

For Research Use Only. Not for Use in Diagnostic Procedures.

[Antibody](#) | [ELISA Kits](#) | [Protein](#) | [Reagents](#)