

Catalase (PT0146R) PT™ Rabbit mAb

CatalogNo: YM8083 **Recombinant** 

Key Features

Host Species

- Rabbit

Reactivity

- Human, Mouse, Rat

Applications

- WB, IHC, IF, ELISA

MW

- 60kD (Calculated)
- 60kD (Observed)

Isotype

- IgG, Kappa

Storage

Storage* -15°C to -25°C/1 year (Do not lower than -25°C)

Formulation PBS, 50% glycerol, 0.05% Proclin 300, 0.05% BSA

Recommended Dilution Ratios

IHC 1:200-1000

WB 1:1000-5000

IF 1:200-1000

ELISA 1:5000-20000

Basic Information

Clonality Monoclonal

Clone Number PT0146R

Immunogen Information

Specificity Endogenous

Target Information

Gene name CAT

Protein Name Catalase

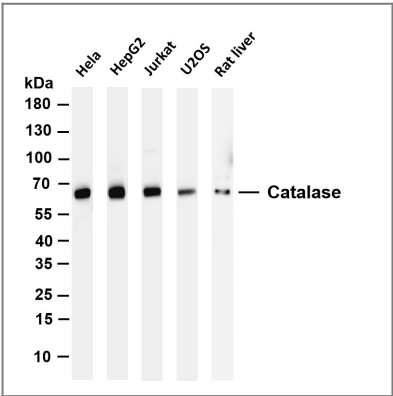
Organism	Gene ID	UniProt ID
Human	847 ;	P04040 ;
Mouse		P24270 ;

Cellular Localization Cytoplasm

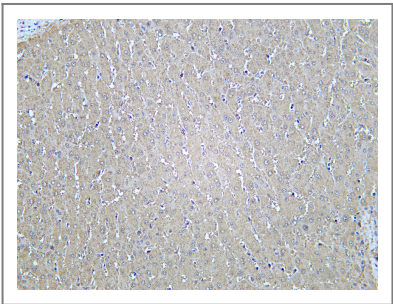
Tissue specificity Brain,Cajal-Retzius cell,Erythrocyte,Eye,Fibroblast,Kidney,Liver,Placenta,Platelet,Skin,Uterus,

Function Catalytic activity:2 H(2)O(2) = O(2) + 2 H(2)O.,cofactor:Heme group.,cofactor:NADP.,Disease:Defects in CAT are the cause of acatalasia (ACATLAS) [MIM:115500]; also known as acatalasemia. This disease is characterized by absence of catalase activity in red cells and is often associated with ulcerating oral lesions.,Function:Occurs in almost all aerobically respiring organisms and serves to protect cells from the toxic effects of hydrogen peroxide. Promotes growth of cells including T-cells, B-cells, myeloid leukemia cells, melanoma cells, mastocytoma cells and normal and transformed fibroblast cells.,online information:Catalase entry,PTM:The N-terminus is blocked.,similarity:Belongs to the catalase family.,subunit:Homotetramer.,

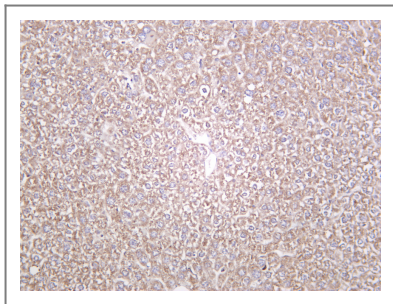
Validation Data



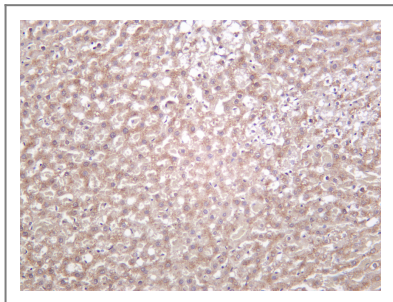
Various whole cell lysates were separated by 4-20% SDS-PAGE, and the membrane was blotted with anti-Catalase antibody. The HRP-conjugated Goat anti-Rabbit IgG(H + L) antibody was used to detect the antibody. Lane 1: Hela Lane 2: HepG2 Lane 3: Jurkat Lane 4: U2OS Lane 5: Rat liver
Predicted band size: 60kDa Observed band size: 60kDa



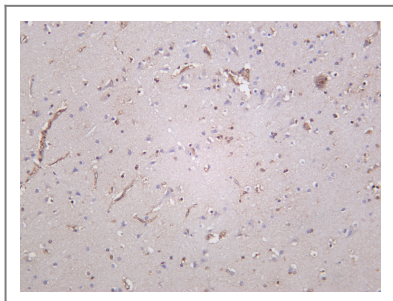
Human liver was stained with Anti-Catalase rabbit antibody



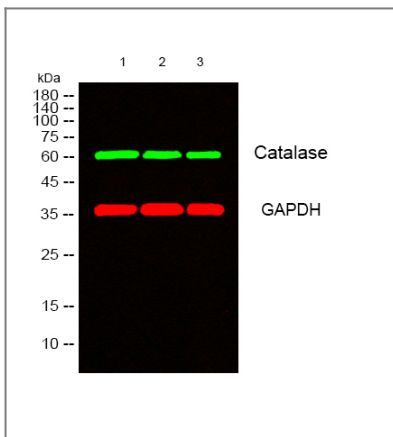
Mouse liver was stained with Anti-Catalase rabbit antibody



Rat liver was stained with Anti-Catalase rabbit antibody



Human brain was stained with Anti-Catalase rabbit antibody



Western blot analysis of lysates from 1) HT29, 2) A549, 3) HELA cells, (Green) primary antibody was diluted at 1:1000, 4° over night, secondary antibody(cat:RS23920) was diluted at 1:10000, 37° 1 hour. (Red) GAPDH Monoclonal Antibody(2B8) (cat:YM3029) antibody was diluted at 1:5000 as loading control, 4° over night, secondary antibody(cat:RS23710) was diluted at 1:10000, 37° 1 hour.

Contact information

Orders: order.cn@immunoway.com
 Support: support.cn@immunoway.com
 Telephone: 400-8787-807(China)
 Website: <http://www.immunoway.com.cn>
 Address: 2200 Ringwood Ave San Jose, CA 95131 USA



Please scan the QR code to access additional product information:
Catalase (PT0146R)
PT™ Rabbit mAb

