

# ICAM-1 (PT0133R) PT™ Rabbit mAb

CatalogNo: YM8074 **Recombinant** 

## Key Features

### Host Species

- Rabbit

### Reactivity

- Human

### Applications

- WB,IHC,IF,IP,ELISA

### MW

- 58kD (Calculated)  
100kD (Observed)

### Isotype

- IgG, Kappa

## Storage

**Storage\*** -15°C to -25°C/1 year (Do not lower than -25°C)

**Formulation** PBS, 50% glycerol, 0.05% Proclin 300, 0.05%BSA

## Recommended Dilution Ratios

**IHC 1:100-200**

**WB 1:1000-5000**

**IF 1:200-1000**

**ELISA 1:5000-20000**

**IP 1:50-200**

## Basic Information

**Clonality** Monoclonal

**Clone Number** PT0133R

## Immunogen Information

**Immunogen** The specific immunogen used to produce this antibody is proprietary information.

**Specificity** Endogenous

## Target Information

**Gene name** ICAM1

**Protein Name** Intercellular adhesion molecule 1

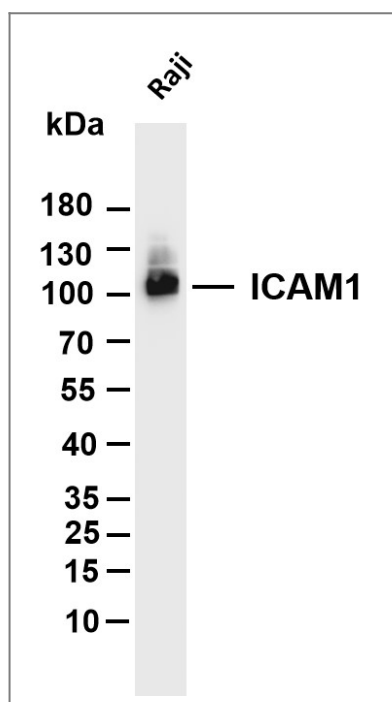
Organism	Gene ID	UniProt ID
Human	<a href="#">3383</a> ;	<a href="#">P05362</a> ;

**Cellular Localization** Membranous

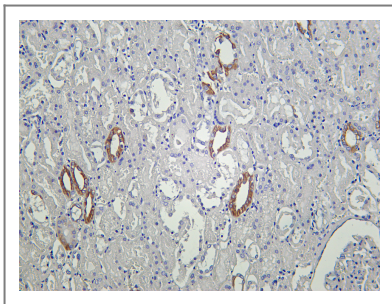
**Tissue specificity** Blood ,Kidney ,Liver ,Melanoma ,Plasma ,

**Function** Function:ICAM proteins are ligands for the leukocyte adhesion protein LFA-1 (integrin alpha-L/beta-2) . During leukocyte trans-endothelial migration , ICAM1 engagement promotes the assembly of endothelial apical cups through SGEF and RHOG activation. In case of rhinovirus infection acts as a cellular receptor for the virus. ,online information:ICAM-1 ,online information:Icosahedral capsid structure ,online information:Intercellular adhesion molecule entry ,polymorphism:Homozygotes with ICAM1-Kalifi Met-56 seem to have an increased risk for cerebral malaria. ,PTM:Monoubiquitinated , which is promoted by MARCH9 and leads to endocytosis. ,similarity:Belongs to the immunoglobulin superfamily. ICAM family. ,similarity:Contains 5 Ig-like C2-type (immunoglobulin-like) domains. ,subunit:Homodimer (Probable) . Interacts with human herpesvirus 8 MIR2 protein (Probable) . Interacts with MUC1 and promotes cell aggregation in epithelial cells. Interacts with SGEF. Binds to coxsackievirus A21 capsid proteins and acts as a receptor for this virus.

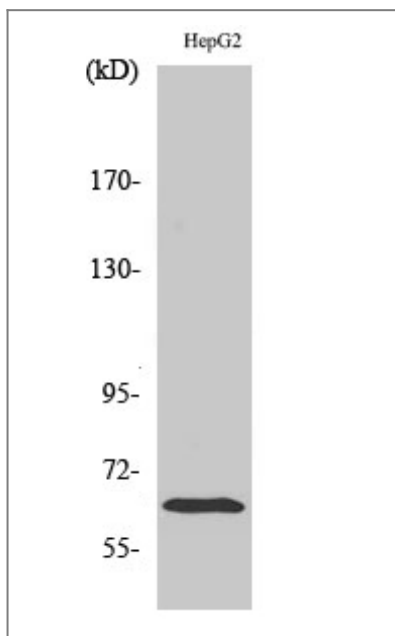
## Validation Data



Various whole cell lysates were separated by 4-20% SDS-PAGE, and the membrane was blotted with anti-ICAM1 antibody. The HRP-conjugated Goat anti-Rabbit IgG (H + L) antibody was used to detect the antibody. Lane 1: Raji Predicted band size: 58kDa Observed band size: 100kDa



Human kidney was stained with Anti-ICAM1 rabbit antibody



Western Blot analysis of HepG2 cells using ICAM-1 Antibody diluted at 1:500

## Contact information

Orders: [order.cn@immunoway.com](mailto:order.cn@immunoway.com)  
Support: [support.cn@immunoway.com](mailto:support.cn@immunoway.com)  
Telephone: 400-8787-807(China)  
Website: <http://www.immunoway.com.cn>  
Address: 2200 Ringwood Ave San Jose, CA 95131 USA



Please scan the QR code to access additional product information:  
**ICAM-1 (PT0133R)**  
**PT™ Rabbit mAb**

For Research Use Only. Not for Use in Diagnostic Procedures.

[Antibody](#) | [ELISA Kits](#) | [Protein](#) | [Reagents](#)