

## CDK6 (PT0069R) Rabbit mAb

CatalogNo: YM8037 **Recombinant** 

### Key Features

#### Host Species

- Rabbit

#### Reactivity

- Human

#### Applications

- WB,IHC,IF,ELISA

#### MW

- 37kD (Calculated)
- 37kD (Observed)

#### Isotype

- IgG,Kappa

### Storage

**Storage\*** -15°C to -25°C/1 year(Do not lower than -25°C)**Formulation** PBS, 50% glycerol, 0.05% Proclin 300, 0.05%BSA

### Recommended Dilution Ratios

**IHC 1:200-1000****WB 1:1000-5000****IF 1:200-1000****ELISA 1:5000-20000**

### Basic Information

**Clonality** Monoclonal**Clone Number** PT0069R

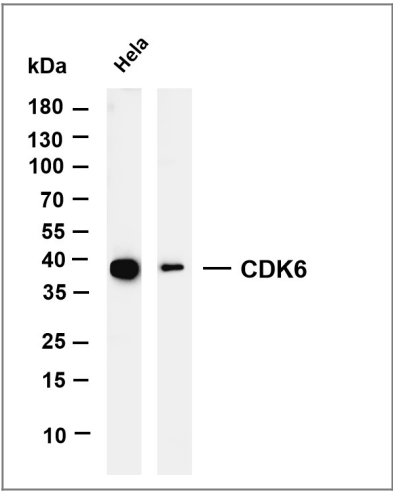
### Immunogen Information

**Specificity** Endogenous

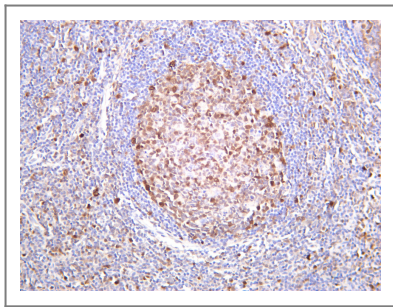
## Target Information

|                       |   |                         |                          |
|-----------------------|---|-------------------------|--------------------------|
| Gene name             | CDK6 CDKN6  |                         |                          |
| Protein Name          | Cyclin-dependent kinase 6 (Cell division protein kinase 6) (Serine/threonine-protein kinase PLSTIRE)  |                         |                          |
|                       | Organism  | Gene ID                 | UniProt ID               |
|                       | Human   | <a href="#">1021</a> ;  | <a href="#">Q00534</a> ; |
|                       | Mouse   | <a href="#">12571</a> ; | <a href="#">Q64261</a> ; |
| Cellular Localization | Nuclear   |                         |                          |
| Tissue specificity    | Expressed ubiquitously. Accumulates in squamous cell carcinomas, proliferating hematopoietic progenitor cells, beta-cells of pancreatic islets of Langerhans, and neuroblastomas. Reduced levels in differentiating cells.  |                         |                          |
| Function              | Catalytic activity:ATP + a protein = ADP + a phosphoprotein.,Function:Probably involved in the control of the cell cycle. Interacts with D-type G1 cyclins.,polymorphism:Genetic variations in CDK6 influences stature as a quantitative trait type 11 (STQTL11) [MIM:612223]. Adult height is an easily observable and highly heritable complex continuous trait. Because of this, it is a model trait for studying genetic influence on quantitative traits.,similarity:Belongs to the protein kinase superfamily.,similarity:Belongs to the protein kinase superfamily. CMGC Ser/Thr protein kinase family. CDC2/CDKX subfamily.,similarity:Contains 1 protein kinase domain., |                         |                          |

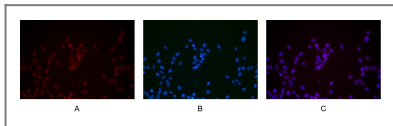
## Validation Data



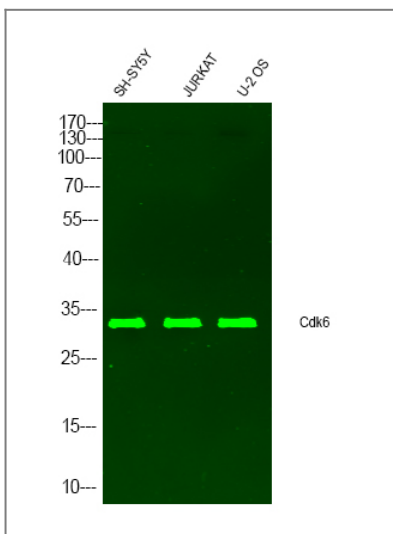
Various whole cell lysates were separated by 4-20% SDS-PAGE, and the membrane was blotted with anti-CDK6 antibody. The HRP-conjugated Goat anti-Rabbit IgG(H + L) antibody was used to detect the antibody. Lane 1: HeLa Lane 2: Jurkat Lane 3: K562 Predicted band size: 37kDa Observed band size: 37kDa



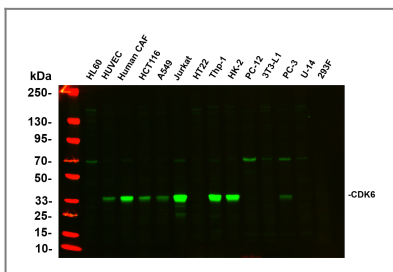
Human tonsil was stained with Anti-CDK6 rabbit antibody



Immunofluorescence analysis of HEK293. Picture A: CDK6 antibody (red). Picture B: DAPI (blue). Picture C: Merge of A+B



Western Blot analysis of various cell lysis. Primary Antibody was diluted at 1:1000. Secondary antibody(catalog#:RS23920) was diluted at 1:10000



Various whole cell lysates were separated by 4-20% SDS-PAGE, and the primary antibody was used at 4°C, over night with a 1:2500 dilution. The Dylight 800-conjugated Goat anti-Rabbit antibody(Cat:RS23920) was used to detect the antibody. Lane1: HL60 - Human promyelocytic leukemia cell Lane2: HUVEC - Human umbilical vein endothelial cell Lane3: Human CAF - Human cancer-associated fibroblast Lane4: HCT116 - Human colorectal carcinoma Lane5: A549 - Human lung carcinoma Lane6: Jurkat - Human T lymphocyte leukemia Lane7: HT22 - Mouse hippocampal neuronal Lane8: Thp-1 - Human monocytic leukemia Lane9: HK-2 - Human proximal tubular epithelial Lane10: PC-12 - Rat adrenal pheochromocytoma Lane11: 3T3-L1 - Mouse embryonic fibroblast cells Lane12: PC-3 - Human prostate adenocarcinoma Lane13: U-14 - Mouse cervical carcinoma Lane14: 293F - HEK293 derivative, adapted for suspension culture Predicted band size: 37kDa Observed band size: 37kDa

## Contact information

Orders: order.cn@immunoway.com  
 Support: support.cn@immunoway.com  
 Telephone: 400-8787-807(China)  
 Website: <http://www.immunoway.com.cn>  
 Address: 2200 Ringwood Ave San Jose, CA 95131 USA



Please scan the QR code to access additional product information:  
**CDK6 (PT0069R)**  
**Rabbit mAb**

