

CEA (carcinoembryonic antigen) (PT0031R) Rabbit mAb (Ready to Use)

CatalogNo: YM7245R **Recombinant R**

Key Features

Host Species

- Rabbit

Reactivity

- Human

Applications

- IHC

Isotype

- IgG1, Kappa

Storage

Storage* 2°C to 8°C/1 year, Ship by ice bag

Formulation The prediluted ready-to-use antibody is diluted in phosphate buffer saline containing stabilizing protein and 0.05% Proclin 300

Recommended Dilution Ratios

Ready to use for IHC

Basic Information

Clonality Monoclonal

Clone Number PT0031R

Immunogen Information

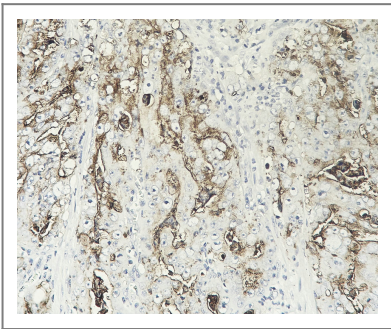
Immunogen Recombinant protein. AA range:35-314

Specificity Endogenous

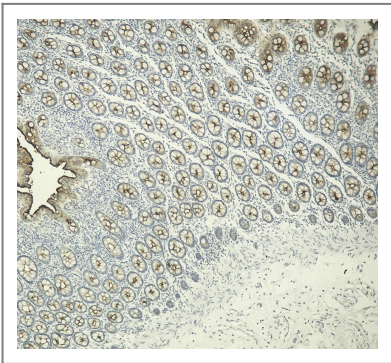
| Target Information

| | | | |
|-----------------------|---|------------------------|--------------------------|
| Gene name | CEACAM5 | | |
| Protein Name | Carcinoembryonic antigen-related cell adhesion molecule 5 | | |
| | Organism | Gene ID | UniProt ID |
| | Human | 1048 ; | P06731 ; |
| | Mouse | | Q3UKK2 ; |
| Cellular Localization | Cytoplasmic, Membranous | | |
| Tissue specificity | Expressed in columnar epithelial and goblet cells of the colon (at protein level) (PubMed:10436421). Found in adenocarcinomas of endoderally derived digestive system epithelium and fetal colon. | | |
| Function | Function:Cell surface glycoprotein that plays a role in cell adhesion and in intracellular signaling. Receptor for E.coli Dr adhesins.,PTM:Complex immunoreactive glycoprotein with a MW of 180 kDa comprising 60% carbohydrate.,similarity:Belongs to the immunoglobulin superfamily. CEA family.,similarity:Contains 7 Ig-like (immunoglobulin-like) domains.,subunit:Homodimer. Binding of E.coli Dr adhesins leads to dissociation of the homodimer.,tissue specificity:Found in adenocarcinomas of endoderally derived digestive system epithelium and fetal colon., | | |

| Validation Data



Human colon carcinoma tissue was stained with Anti-CEA (PT0031R) rabbit Antibody



Human colon tissue was stained with Anti-CEA (PT0031R) rabbit Antibody

| Contact information

Orders: order.cn@immunoway.com
Support: support.cn@immunoway.com
Telephone: 400-8787-807(China)
Website: <http://www.immunoway.com.cn>
Address: 2200 Ringwood Ave San Jose, CA 95131 USA



Please scan the QR code to access additional product information:

CEA
(carcinoembryonic antigen) (PT0031R)
Rabbit mAb (Ready to Use)

For Research Use Only. Not for Use in Diagnostic Procedures.

[Antibody](#) | [ELISA Kits](#) | [Protein](#) | [Reagents](#)