

IRF-4/MUM1 (ABT249R9) Rabbit mAb (Ready to Use)

CatalogNo: YM7162R **Recombinant** 

Key Features

Host Species

- Rabbit

Reactivity

- Human,

Applications

- IHC

Isotype

- IgG1, Kappa

Recommended Dilution Ratios

Ready to use for IHC

Storage

Storage* 2°C to 8°C/1 year

Formulation The prediluted ready-to-use antibody is diluted in phosphate buffer saline containing stabilizing protein and 0.05% Proclin 300

Basic Information

Clonality Monoclonal

Clone Number ABT249R9

Immunogen Information

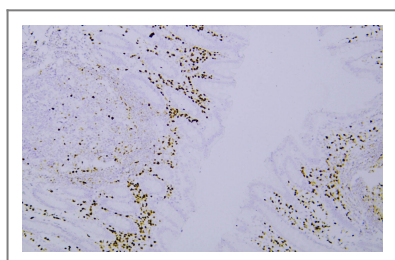
Immunogen Synthesized peptide derived from human MUM1 AA range:350-451

Specificity This antibody detects endogenous levels of MUM1

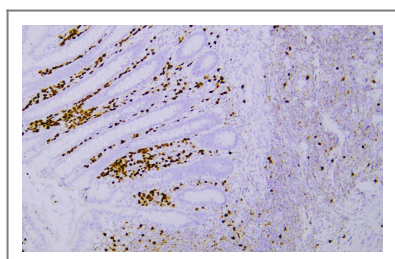
Target Information

Gene name	IRF4 MUM1		
Protein Name	Interferon regulatory factor 4		
	Organism	Gene ID	UniProt ID
	Human	3662;	Q15306;
Cellular Localization	Nuclear		
Tissue specificity	Lymphoid cells.		
Function	<p>Disease:A chromosomal aberration involving IRF4 may be a cause of multiple myeloma [MIM:254500]. Translocation t(6;14)(p25;q32) with the IgH locus.,Function:Transcriptional activator. Binds to the interferon-stimulated response element (ISRE) of the MHC class I promoter. Binds the immunoglobulin lambda light chain enhancer, together with PU.1. Probably plays a role in ISRE-targeted signal transduction mechanisms specific to lymphoid cells.,induction:Not induced by interferons.,similarity:Belongs to the IRF family.,similarity:Contains 1 tryptophan pentad repeat DNA-binding domain.,subunit:Interacts with SPIB and DEF6.,tissue specificity:Lymphoid cells.,</p>		

Validation Data



Human appendix was stained with anti-IRF-4/MUM1 (ABT249R9) rabbit mAb



Human appendix was stained with anti-IRF-4/MUM1 (ABT249R9) rabbit mAb

Contact information

Orders: order.cn@immunoway.com
 Support: support.cn@immunoway.com
 Telephone: 400-8787-807(China)
 Website: <http://www.immunoway.com.cn>
 Address: 2200 Ringwood Ave San Jose, CA 95131 USA



Please scan the QR code to access additional product information:
IRF-4/MUM1
(ABT249R9) Rabbit mAb (Ready to Use)

