

hCG β (ABT75R) Rabbit mAb (Ready to Use)

CatalogNo: YM7136R **Recombinant** 

Key Features

Host Species

- Rabbit

Reactivity

- Human,

Applications

- IHC

Isotype

- IgG1, Kappa

Recommended Dilution Ratios

Ready to use for IHC

Storage

Storage* 2°C to 8°C/1 year

Formulation The prediluted ready-to-use antibody is diluted in phosphate buffer saline containing stabilizing protein and 0.05% Proclin 300

Basic Information

Clonality Monoclonal

Clone Number ABT75R

Immunogen Information

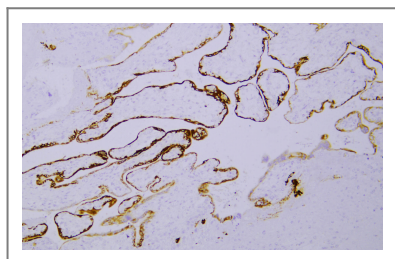
Immunogen Synthesized peptide derived from human hCG β AA range:100-165

Specificity This antibody detects endogenous levels of hCG β

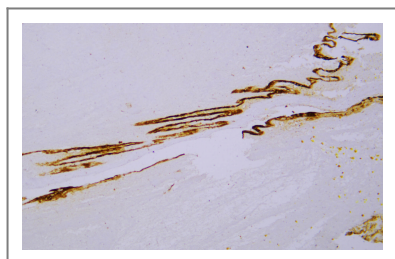
Target Information

Gene name	CGB3/CGB5/CGB8/CGB7/CGB1/CGB2		
Protein Name	CG beta;CG-beta;CgB;CGB3;CGB3_HUMAN;CGB5;CGB7;CGB7_HUMAN;CGB8;CGHB_HUMAN;Choriogonadotropin subunit beta 3;Choriogonadotropin subunit beta 7;Choriogonadotropin subunit beta;Chorionic gonadotropin beta polypeptide;Chorionic gonadotropin chain beta		
	Organism	Gene ID	UniProt ID
	Human		P0DN86 ; P0DN87 ;
Cellular Localization	Cytoplasmic		
Tissue specificity	Placenta		

Validation Data



Human placenta was stained with anti-hCG β (ABT75R) rabbit mAb



Human hydatidiform mole was stained with anti-hCG β (ABT75R) rabbit mAb

Contact information

Orders: order.cn@immunoway.com
 Support: support.cn@immunoway.com
 Telephone: 400-8787-807(China)
 Website: <http://www.immunoway.com.cn>
 Address: 2200 Ringwood Ave San Jose, CA 95131 USA



Please scan the QR code
 to access additional
 product information:
hCG β (ABT75R)
Rabbit mAb (Ready
to Use)