

Gastrin (ABT60R) Rabbit mAb (Ready to Use)

CatalogNo: YM7121R **Recombinant R**

Key Features

Host Species

- Rabbit

Reactivity

- Human,

Applications

- IHC

Isotype

- IgG1, Kappa

Recommended Dilution Ratios

Ready to use for IHC

Storage

Storage* 2°C to 8°C/1 year

Formulation The prediluted ready-to-use antibody is diluted in phosphate buffer saline containing stabilizing protein and 0.05% Proclin 300

Basic Information

Clonality Monoclonal

Clone Number ABT60R

Immunogen Information

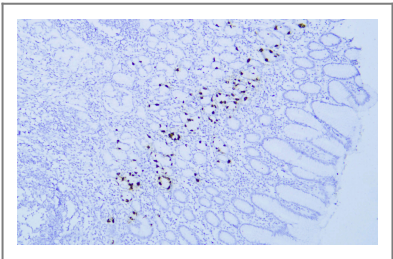
Immunogen Synthesized peptide derived from human Gastrin AA range:50-101

Specificity This antibody detects endogenous levels of Gastrin

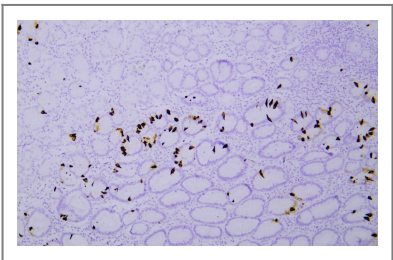
Target Information

Gene name	GAST		
Protein Name	Gastric mucin 6;Gastric Mucin;Gastric mucin-6;MUC 6;MUC-6;Muc6;MUC6 Fragment;MUC6 mucin;MUC6 mucin Fragment;MUC6_HUMAN;Mucin 6;Mucin 6 gastric;Mucin 6 oligomeric mucus/gel forming;Mucin glycoprotein Fragment;Mucin-6;Secretory mucin MUC6 Fragment		
	Organism	Gene ID	UniProt ID
	Human	2520 ;	P01350 ;
	Mouse		P48757 ;
	Rat		P04563 ;
Cellular Localization	Cytoplasmic		
Tissue specificity	Pyloric region of the stomach		
Function	Function:Gastrin stimulates the stomach mucosa to produce and secrete hydrochloric acid and the pancreas to secrete its digestive enzymes. It also stimulates smooth muscle contraction and increases blood circulation and water secretion in the stomach and intestine.,online information:Gastrin entry,PTM:Sulfation enhances proteolytic processing, and blocks peptide degradation. Levels of sulfation differ between proteolytically-cleaved gastrins. Thus, gastrin-6 is almost 73% sulfated, whereas the larger gastrins are less than 50% sulfated. Sulfation levels are also tissue-specific.,PTM:Two different processing pathways probably exist in antral G-cells. In the dominant pathway progastrin is cleaved at three sites resulting in two major bioactive gastrins, gastrin-34 and gastrin-17. In the putative alternative pathway, progastrin may be processed only at the most C-terminal dibasic site resulting in the synthesis of gastrin-71.,similarity:Belongs to the gastrin/cholecystokinin family.,		

| Validation Data



Human stomach was stained with anti-Gastrin (ABT60R) rabbit mAb



Human gastric adenocarcinoma was stained with anti-Gastrin (ABT60R) rabbit mAb

| Contact information

Orders: order.cn@immunoway.com
Support: support.cn@immunoway.com
Telephone: 400-8787-807(China)
Website: <http://www.immunoway.com.cn>
Address: 2200 Ringwood Ave San Jose, CA 95131 USA



Please scan the QR code
to access additional
product information:

**Gastrin (ABT60R)
Rabbit mAb (Ready
to Use)**

For Research Use Only. Not for Use in Diagnostic Procedures.

[Antibody](#) | [ELISA Kits](#) | [Protein](#) | [Reagents](#)