

TIMP1 (PT2236) Mouse mAb

CatalogNo: YM6655

Key Features

Host Species

- Mouse

Reactivity

- Human

Applications

- IHC,IF,ELISA

MW

- 23kD (Calculated)
23kD (Observed)

Isotype

- IgG1,Kappa

Recommended Dilution Ratios

IHC 1:50-200**IF 1:50-200****ELISA 1:500-5000**

Storage

Storage*

-15°C to -25°C/1 year(Do not lower than -25°C)

Formulation

PBS, 50% glycerol, 0.05% Proclin 300, 0.05%BSA

Basic Information

Clonality

Monoclonal

Clone Number

PT2236

Immunogen Information

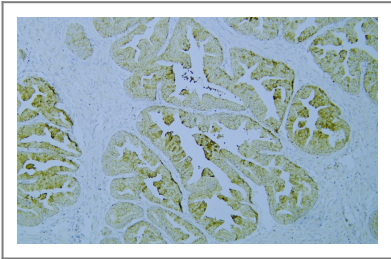
ImmunogenSynthesized peptide derived from human Tissue Inhibitor of Metalloproteinases 1(TIMP1)
AA range: 50-150**Specificity**

This antibody detects endogenous levels of TIMP1 protein.

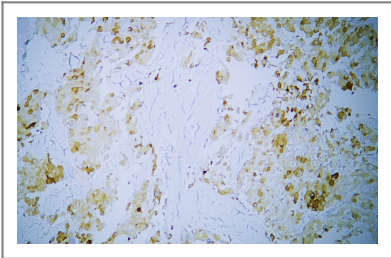
| Target Information

Gene name	TIMP1 CLGI TIMP		
Protein Name	Metalloproteinase inhibitor 1 (Erythroid-potentiating activity) (EPA) (Fibroblast collagenase inhibitor) (Collagenase inhibitor) (Tissue inhibitor of metalloproteinases 1) (TIMP-1)		
	Organism	Gene ID	UniProt ID
	Human	7076 ;	P01033 ;
Cellular Localization	Cytoplasmic		
Tissue specificity	Detected in rheumatoid synovial fluid (at protein level).		
Function	Function:Complexes with metalloproteinases (such as collagenases) and irreversibly inactivates them. Also mediates erythropoiesis in vitro; but, unlike IL-3, it is species-specific, stimulating the growth and differentiation of only human and murine erythroid progenitors. Known to act on MMP-1, MMP-2, MMP-3, MMP-7, MMP-8, MMP-9, MMP-10, MMP-11, MMP-12, MMP-13 and MMP-16. Does not act on MMP-14.,PTM:The activity of TIMP1 is dependent on the presence of disulfide bonds.,similarity:Belongs to the protease inhibitor I35 (TIMP) family.,similarity:Contains 1 NTR domain.,		

| Validation Data



Human prostate tissue was stained with Anti-TIMP1 (PT2236) Antibody



Human thyroid carcinoma tissue was stained with Anti-TIMP1 (PT2236) Antibody

| Contact information

Orders: order.cn@immunoway.com
Support: support.cn@immunoway.com
Telephone: 400-8787-807(China)
Website: <http://www.immunoway.com.cn>
Address: 2200 Ringwood Ave San Jose, CA 95131 USA



Please scan the QR code
to access additional
product information:
TIMP1 (PT2236)
Mouse mAb

For Research Use Only. Not for Use in Diagnostic Procedures.

[Antibody](#) | [ELISA Kits](#) | [Protein](#) | [Reagents](#)