

Villin (PT0254) Mouse mAb

CatalogNo: YM4943

| Key Features

Host Species

- Mouse

Reactivity

- Human, Mouse, Pig, Bovine,

Applications

- IHC, WB, IF, ELISA

MW

- 93kD (Calculated)
93kD (Observed)

Isotype

- IgG2b, Kappa

| Recommended Dilution Ratios

IHC 1:100-500

WB 1:500-2000

IF 1:100-500

ELISA 1:1000-5000

| Storage

Storage* -15°C to -25°C/1 year (Do not lower than -25°C)

Formulation PBS, 50% glycerol, 0.05% Proclin 300, 0.05% BSA

| Basic Information

Clonality Monoclonal

Clone Number PT0254

| Immunogen Information

Immunogen Synthesized peptide derived from human Villin AA range: 150-250

Specificity The antibody can specifically recognize human Villin protein. In western blotting of SW480 and HepG2 cell lysates, the antibody can label a 93 kDa band corresponding to Villin.

| Target Information

Gene name VIL1 VIL

Protein Name Villin-1

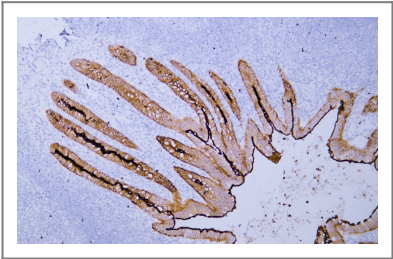
Organism	Gene ID	UniProt ID
Human	7429 ;	P09327 ;

Cellular Localization Membranous, Cytoplasmic

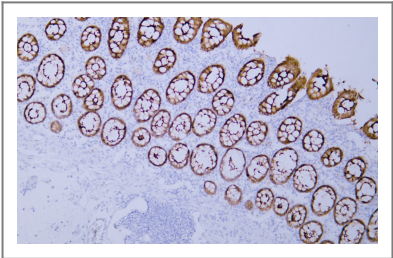
Tissue specificity Specifically expressed in epithelial cells. Major component of microvilli of intestinal epithelial cells and kidney proximal tubule cells. Expressed in canalicular microvilli of hepatocytes (at protein level).

Function Domain:Consists of a large core fragment, the N-terminal portion, and a small headpiece, the C-terminal portion. The headpiece binds F-actin strongly in both the presence and absence of calcium.,Function:Ca(2+)-regulated actin-binding protein.,similarity:Belongs to the villin/gelsolin family.,similarity:Contains 1 HP (headpiece) domain.,similarity:Contains 6 gelsolin-like repeats.,subunit:Monomer.,tissue specificity:Major component of microvilli of intestinal epithelial cells and kidney proximal tubule cells.,

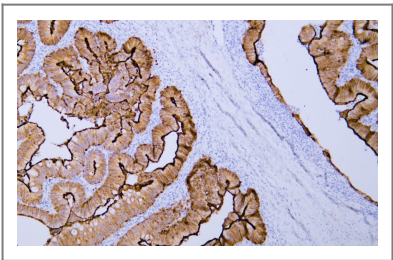
| Validation Data



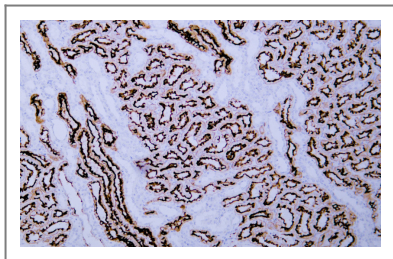
Human appendix tissue was stained with anti-Villin (PT0254) Antibody



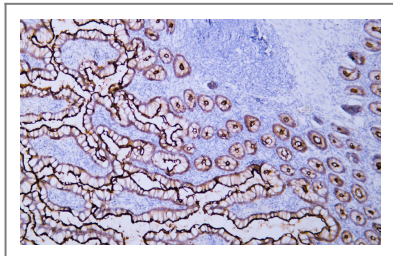
Human colon tissue was stained with anti-Villin (PT0254) Antibody



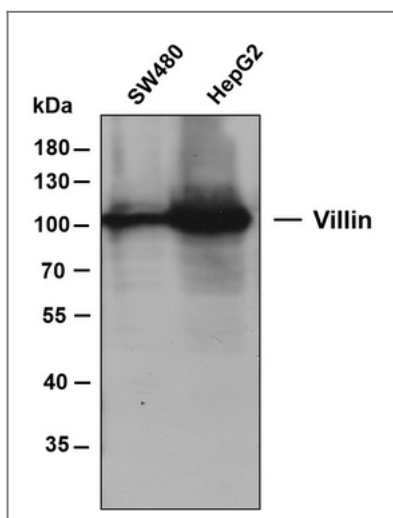
Human colon carcinoma tissue was stained with anti-Villin (PT0254) Antibody



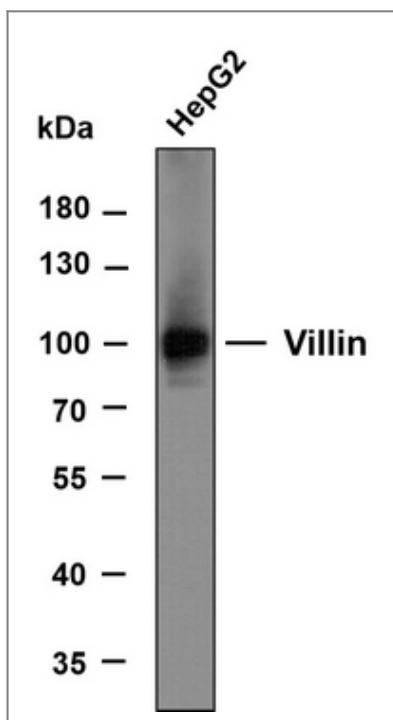
Human kidney tissue was stained with anti-Villin (PT0254) Antibody



Human small intestine tissue was stained with anti-Villin (PT0254) Antibody



Various whole cell lysates were separated by 8% SDS-PAGE, and the membrane was blotted with anti-Villin antibody. The HRP-conjugated anti-Mouse IgG antibody was used to detect the antibody.



Whole cell lysates of HepG2 were separated by 8% SDS-PAGE, and the membrane was blotted with anti-Villin antibody. The HRP-conjugated anti-Mouse IgG antibody was used to detect the antibody.

| Contact information

Orders: order.cn@immunoway.com
Support: support.cn@immunoway.com
Telephone: 400-8787-807(China)
Website: <http://www.immunoway.com.cn>
Address: 2200 Ringwood Ave San Jose, CA 95131 USA



Please scan the QR code
to access additional
product information:
Villin (PT0254)
Mouse mAb

For Research Use Only. Not for Use in Diagnostic Procedures.

[Antibody](#) | [ELISA Kits](#) | [Protein](#) | [Reagents](#)