

## MCM2 (ABT-MCM2) Mouse mAb

CatalogNo: YM4932 **Recombinant** 

### Key Features

**Host Species**

- Mouse

**Reactivity**

- Human, Mouse

**Applications**

- IHC, WB, IF, ELISA

**MW**

- 120kD (Calculated)  
130kD (Observed)

**Isotype**

- IgG1, Kappa

### Storage

**Storage\*** -15°C to -25°C/1 year(Do not lower than -25°C)**Formulation** PBS, 50% glycerol, 0.05% Proclin 300, 0.05%BSA

### Recommended Dilution Ratios

**IHC 1:100-500****WB 1:500-2000****IF 1:100-500****ELISA 1:1000-5000**

### Basic Information

**Clonality** Monoclonal**Clone Number** ABT-MCM2

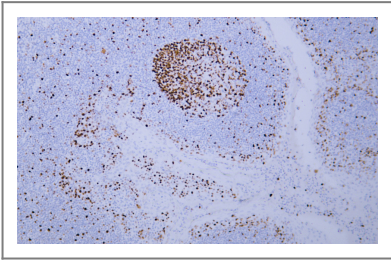
### Immunogen Information

**Immunogen** Synthesized peptide derived from human MCM2 AA range: 300-400**Specificity** The antibody can specifically recognize human MCM2 protein. In western blotting of HEK293 cell lysate, the antibody can label a 130 kDa band.

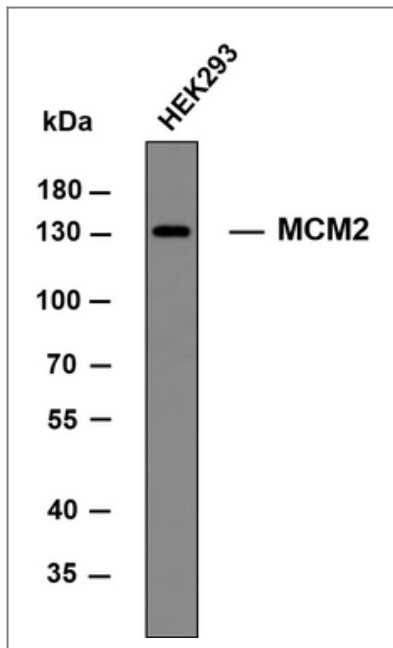
## | Target Information

Gene name	MCM2 BM28 CCNL1 CDCL1 KIAA0030		
Protein Name	DNA replication licensing factor MCM2 (Minichromosome maintenance protein 2 homolog) (Nuclear protein BM28)		
	Organism	Gene ID	UniProt ID
	Human	<a href="#">4171</a> ;	<a href="#">P49736</a> ;
	Mouse	<a href="#">17216</a> ;	<a href="#">P97310</a> ;
Cellular Localization	Nuclear		
Tissue specificity	Bone marrow,Brain,Cervix carcinoma,Colon carcinoma,Epithelia		
Function	Function:Acts as a factor that allows the DNA to undergo a single round of replication per cell cycle. Required for the entry in S phase and for cell division.,PTM:Phosphorylated on Ser-108 by ATR in proliferating cells. Ser-108 proliferation is increased by genotoxic agents. Ser-40 is mediated by the CDC7-DBF4 and CDC7-DBF4B complexes, while Ser-53 phosphorylation is only mediated by the CDC7-DBF4 complex.,sequence Caution:Translation N-terminally shortened.,similarity:Belongs to the MCM family.,similarity:Contains 1 MCM domain.,subunit:Interacts with DBF4 (By similarity). Interacts with MYST2. May interact with MCM10.,		

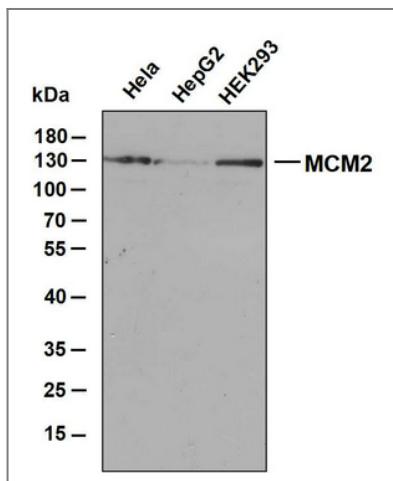
## | Validation Data



Human tonsil tissue was stained with Anti-MCM2 (ABT-MCM2) Antibody



Whole cell lysates of HEK293 were separated by 8% SDS-PAGE, and the membrane was blotted with anti-MCM2 antibody. The HRP-conjugated anti-Mouse IgG antibody was used to detect the antibody.



Various whole cell lysates were separated by 10% SDS-PAGE, and the membrane was blotted with anti-MCM2 antibody. The HRP-conjugated anti-Mouse IgG antibody was used to detect the antibody.

## Contact information

Orders: order.cn@immunoway.com  
 Support: support.cn@immunoway.com  
 Telephone: 400-8787-807(China)  
 Website: <http://www.immunoway.com.cn>  
 Address: 2200 Ringwood Ave San Jose, CA 95131 USA



Please scan the QR code to access additional product information:  
**MCM2 (ABT-MCM2)**  
**Mouse mAb**