

INI-1 (ABT188) Mouse mAb

CatalogNo: YM4930

| Key Features

Host Species

- Mouse

Reactivity

- Human, Mouse,

Applications

- IHC, WB, IF, ELISA

MW

- 44kD (Calculated)
44kD (Observed)

Isotype

- IgG2b, Kappa

| Recommended Dilution Ratios

IHC 1:100-500

WB 1:500-2000

IF 1:100-500

ELISA 1:1000-5000

| Storage

Storage* -15°C to -25°C/1 year(Do not lower than -25°C)

Formulation PBS, 50% glycerol, 0.05% Proclin 300, 0.05%BSA

| Basic Information

Clonality Monoclonal

Clone Number ABT188

| Immunogen Information

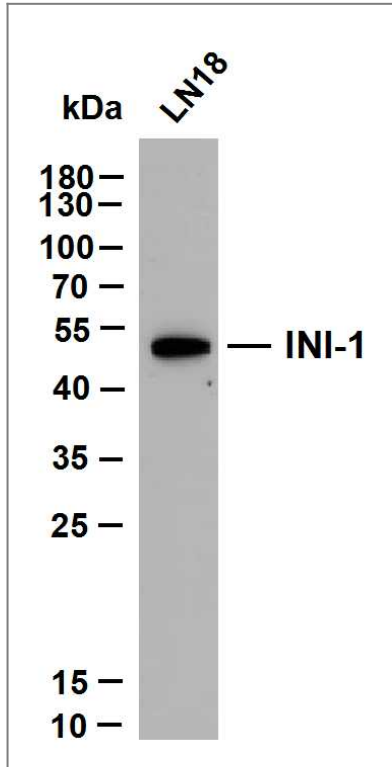
Immunogen Synthesized peptide derived from human INI-1 AA range: 300-385

Specificity The antibody can specifically recognize human INI-1 protein, including INI-1A and INI-1B. In western blotting of Hela and LnCap cell lysates, the antibody can label two bands with molecular weight of 44, 43 kDa representing INI-1A and INI-1B respectively.

| Target Information

Gene name	SMARCB1 BAF47 INI1 SNF5L1		
Protein Name	SWI/SNF related, matrix associated, actin dependent regulator of chromatin, subfamily b, member 1		
	Organism	Gene ID	UniProt ID
	Human	6598 ;	Q12824 ;
	Mouse	20587 ;	Q9Z0H3 ;
Cellular Localization	Nuclear		
Tissue specificity	Brain		
Function	<p>Disease:Defects in SMARCB1 are a cause of rhabdoid tumor (RDT) [MIM:609322]; also called malignant rhabdoid tumor (MRT). Tumor suppressor. Inactivated in rhabdoid tumors. Rhabdoid tumors are a highly malignant group of neoplasms that usually occur in early childhood. SMARCB1/INI1 is also frequently inactivated in epithelioid sarcomas.,Disease:Defects in SMARCB1 are a cause of schwannomatosis [MIM:162091]; also called congenital cutaneous neurilemmomatosis. Schwannomas are benign tumors of the peripheral nerve sheath that usually occur singly in otherwise normal individuals. Multiple schwannomas in the same individual suggest an underlying tumor-predisposition syndrome. The most common such syndrome is NF2. The hallmark of NF2 is the development of bilateral vestibular-nerve schwannomas; but two-thirds or more of all NF2-affected individuals develop schwannomas in other locations, and dermal schwannomas may precede vestibular tumors in NF2-affected children. There have been several reports of individuals with multiple schwannomas who do not show evidence of vestibular schwannoma. Clinical report suggests that schwannomatosis is a clinical entity distinct from other forms of neurofibromatosis.,Function:Core component of the BAF (hSWI/SNF) complex. This ATP-dependent chromatin-remodeling complex plays important roles in cell proliferation and differentiation, in cellular antiviral activities and inhibition of tumor formation. The BAF complex is able to create a stable, altered form of chromatin that constrains fewer negative supercoils than normal. This change in supercoiling would be due to the conversion of up to one-half of the nucleosomes on polynucleosomal arrays into asymmetric structures, termed altosomes, each composed of 2 histones octamers. Stimulates in vitro the remodeling activity of SMARCA4/BRG1. Involved in activation of CSF1 promoter. Plays a key role in cell-cycle control and causes cell cycle arrest in G0/G1. Also involved in vitamin D-coupled transcription regulation via its association with the WINAC complex, a chromatin-remodeling complex recruited by vitamin D receptor (VDR), which is required for the ligand-bound VDR-mediated transrepression of the CYP27B1 gene.,PTM:Phosphorylated upon DNA damage, probably by ATM or ATR.,similarity:Belongs to the SNF5 family.,subunit:Component of the BAF (hSWI/SNF) complex, which includes at least actin (ACTB), ARID1A, ARID1B/BAF250, SMARCA2, SMARCA4/BRG1, ACTL6A/BAF53, ACTL6B/BAF53B, SMARCE1/BAF57 SMARCC1/BAF155, SMARCC2/BAF170, SMARCB1/SNF5/INI1, and one or more of SMARCD1/BAF60A, SMARCD2/BAF60B, or SMARCD3/BAF60C. In muscle cells, the BAF complex also contains DPF3. Binds directly with SMARCC1/BAF155 and SMARCC2/BAF170, and these three proteins bind SMARCA4/BRG1. Component of the WINAC complex, at least composed of SMARCA2, SMARCA4, SMARCB1, SMARCC1, SMARCC2, SMARCD1, SMARCE1, ACTL6A, BAZ1B/WSTF, ARID1A, SUPT16H, CHAF1A and TOP2B. Binds to double-stranded DNA. Interacts with MYK and MAEL. Interacts with PPP1R15A. Binds tightly to the human immunodeficiency virus-type 1 (HIV-1) integrase in vitro and stimulates its DNA-joining activity. Interacts with human papillomavirus 18 E1 protein to stimulates its viral replication. Interacts with Epstein-Barr virus protein EBNA-2.,</p>		

Validation Data



LN18 whole cell lysates were separated by 10% SDS-PAGE, and the membrane was blotted with anti-INI-1(ABT188) antibody. The HRP-conjugated Goat anti-Mouse IgG(H + L) antibody was used to detect the antibody. Lane 1: LN18

Contact information

Orders: order.cn@immunoway.com
Support: support.cn@immunoway.com
Telephone: 400-8787-807(China)
Website: <http://www.immunoway.com.cn>
Address: 2200 Ringwood Ave San Jose, CA 95131 USA



Please scan the QR code to access additional product information:

INI-1 (ABT188)
Mouse mAb

For Research Use Only. Not for Use in Diagnostic Procedures.

[Antibody](#) | [ELISA Kits](#) | [Protein](#) | [Reagents](#)