

hCG α (ABT-HCG) Mouse mAb

CatalogNo: YM4929 **Recombinant** 

Key Features

Host Species

- Mouse

Reactivity

- Human

Applications

- IHC,WB,IF,ELISA

MW

- 13kD (Calculated)
13kD (Observed)

Isotype

- IgG2a,Kappa

Storage

Storage* -15°C to -25°C/1 year(Do not lower than -25°C)

Formulation PBS, 50% glycerol, 0.05% Proclin 300, 0.05%BSA

Recommended Dilution Ratios

IHC 1:200-1000

WB 1:500-2000

IF 1:100-500

ELISA 1:1000-5000

Basic Information

Clonality Monoclonal

Clone Number ABT-HCG

Immunogen Information

Immunogen Synthesized peptide derived from human hCG AA range: 25-100

Specificity The antibody can specifically recognize α subunits of human CG, LH, FSH and TSH proteins. In western blotting of Hela cell lysate, the antibody can label a 18 kDa band.

Target Information

Gene name CGA

Protein Name Glycoprotein hormones alpha chain (Anterior pituitary glycoprotein hormones common subunit alpha) (Choriogonadotropin alpha chain) (Chorionic gonadotrophin subunit alpha) (CG-alpha) (Follicle-stimulating hormone alpha chain) (FSH-alpha) (Follitropin alpha chain) (Luteinizing hormone alpha chain) (LSH-alpha) (Lutropin alpha chain) (Thyroid-stimulating hormone alpha chain) (TSH-alpha) (Thyrotropin alpha chain)

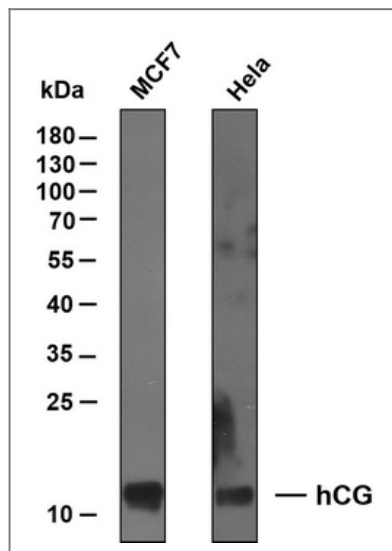
| Organism | Gene ID | UniProt ID |
|----------|------------------------|--------------------------|
| Human | 1081 ; | P01215 ; |

Cellular Localization Cytoplasmic

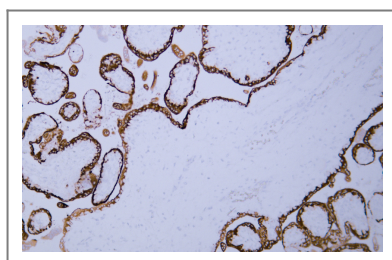
Tissue specificity Pituitary,Placenta,

Function online information:Proteic grace - Issue 77 of December 2006,similarity:Belongs to the glycoprotein hormones subunit alpha family.,subunit:Heterodimer of a common alpha chain and a unique beta chain which confers biological specificity to thyrotropin, lutropin, follitropin and gonadotropin.,

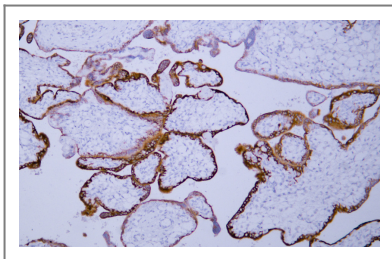
Validation Data



Various whole cell lysates were separated by 12% SDS-PAGE, and the membrane was blotted with anti-hCG antibody. The HRP-conjugated anti-Mouse IgG antibody was used to detect the antibody.



Human placenta tissue was stained with Anti-hCG α (ABT-HCG) Antibody



Human placenta tissue was stained with Anti-hCG α (ABT-HCG) Antibody

Contact information

Orders: order.cn@immunoway.com
Support: support.cn@immunoway.com
Telephone: 400-8787-807(China)
Website: <http://www.immunoway.com.cn>
Address: 2200 Ringwood Ave San Jose, CA 95131 USA



Please scan the QR code
to access additional
product information:
hCG α (ABT-HCG)
Mouse mAb

For Research Use Only. Not for Use in Diagnostic Procedures.

[Antibody](#) | [ELISA Kits](#) | [Protein](#) | [Reagents](#)