

## FLI1/ERG (ABT-FLI1) Mouse mAb

CatalogNo: YM4928

### Key Features

#### Host Species

- Mouse

#### Reactivity

- Human, Mouse,

#### Applications

- IHC, WB, IF, ELISA

#### MW

- 51kD (Observed)

#### Isotype

- IgG1, Kappa

### Recommended Dilution Ratios

IHC 1:100-500

WB 1:500-2000

IF 1:100-500

ELISA 1:1000-5000

### Storage

#### Storage\*

-15°C to -25°C/1 year(Do not lower than -25°C)

#### Formulation

PBS, 50% glycerol, 0.05% Proclin 300, 0.05%BSA

### Basic Information

#### Clonality

Monoclonal

#### Clone Number

ABT-FLI1

### Immunogen Information

#### Immunogen

Synthesized peptide derived from human FLI1 AA range: 300-400

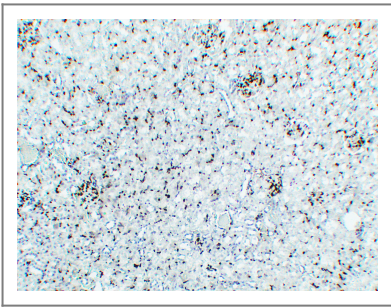
#### Specificity

This antibody detects endogenous levels of FLI1 and ERG protein.

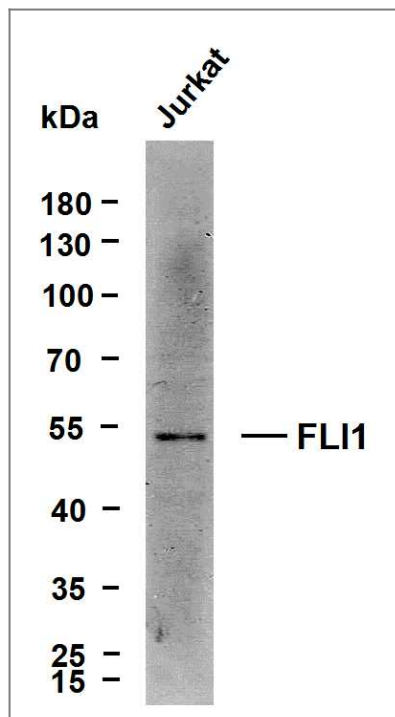
## | Target Information

Gene name	FLI1		
Protein Name	Friend leukemia integration 1 transcription factor (Proto-oncogene Fli-1) (Transcription factor ERGB)		
	Organism	Gene ID	UniProt ID
	Human	<a href="#">2313</a> ;	<a href="#">Q01543</a> ; <a href="#">P11308</a> ;
Cellular Localization	Nuclear		
Tissue specificity	Blood,Bone marrow,Lymph,Placenta,		
Function	Disease:A chromosomal aberration involving FLI1 is a cause of Ewing sarcoma [MIM:133450]. Translocation t(11;22)(q24;q12) with EWS.,Function:Sequence-specific transcriptional activator. Recognizes the DNA sequence 5'-C[CA]GGAAGT-3',miscellaneous:Located on a fragment of chromosome 11 flanked on the centromeric side by the acute lymphoblastic leukemia-associated t(4;11)(q21;q23) translocation breakpoint and on the telomeric side by the Ewing- and neuroepithelioma-associated t(11;22) (q24;q12) breakpoint.,similarity:Belongs to the ETS family.,similarity:Contains 1 ETS DNA-binding domain.,similarity:Contains 1 PNT (pointed) domain.,subunit:Can form homodimers or heterodimers with ETV6/TEL1.,		

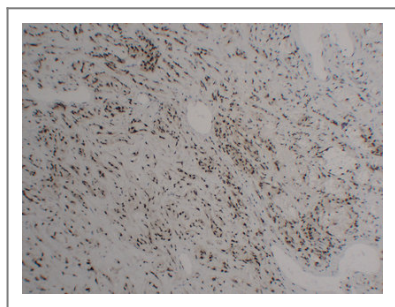
## | Validation Data



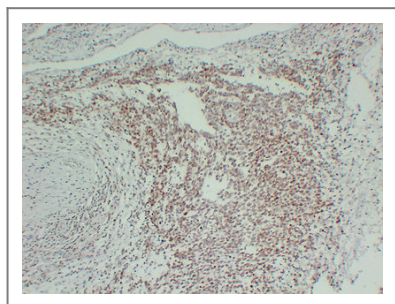
Mouse kidney tissue was stained with Anti-FLI1/ERG (ABT-FLI1) Antibody



Whole cell lysates were separated by 10% SDS-PAGE, and the membrane was blotted with anti-FLI1/ERG (ABT-FLI1) antibody. The HRP-conjugated Goat anti-Mouse IgG(H + L) antibody was used to detect the antibody. Lane 1: Jurkat



Immunohistochemical analysis of paraffin-embedded Hemangioendothelioma. 1, Antibody was diluted at 1:200(4° overnight). 2, Tris-EDTA,pH8.0 was used for antigen retrieval. 3,Secondary antibody was diluted at 1:200(room temperature, 30min).



Immunohistochemical analysis of paraffin-embedded PNET. 1, Antibody was diluted at 1:200(4° overnight). 2, Tris-EDTA,pH8.0 was used for antigen retrieval. 3,Secondary antibody was diluted at 1:200(room temperature, 30min).

## Contact information

Orders: order.cn@immunoway.com  
 Support: support.cn@immunoway.com  
 Telephone: 400-8787-807(China)  
 Website: <http://www.immunoway.com.cn>  
 Address: 2200 Ringwood Ave San Jose, CA 95131 USA



Please scan the QR code to access additional product information:  
**FLI1/ERG (ABT-FLI1)**  
**Mouse mAb**