

## Claudin 3 (ABT509) Mouse mAb

CatalogNo: YM4920 **Recombinant** 

### Key Features

#### Host Species

- Mouse

#### Reactivity

- Human

#### Applications

- IHC, WB, IF, ELISA

#### MW

- 23kD (Calculated)  
22kD (Observed)

#### Isotype

- IgG2b, Kappa

### Storage

**Storage\*** -15°C to -25°C/1 year(Do not lower than -25°C)**Formulation** PBS, 50% glycerol, 0.05% Proclin 300, 0.05%BSA

### Recommended Dilution Ratios

**IHC 1:200-1000****WB 1:500-2000****IF 1:100-500****ELISA 1:1000-5000**

### Basic Information

**Clonality** Monoclonal**Clone Number** ABT509

### Immunogen Information

**Immunogen** Synthesized peptide derived from human Claudin 3 AA range: 150-220**Specificity** The antibody can specifically recognize human Claudin 3 protein.

## Target Information

**Gene name** CLDN3 C7orf1 CPETR2

**Protein Name** C7orf1;Claudin-3;Claudin3;CLD3\_HUMAN;CLDN 3;Cldn3;Clostridium perfringens enterotoxin receptor 2;CPE R2;CPE receptor 2;CPE-R 2;CPE-receptor 2;CPETR 2;CPETR2;HRVP 1;HRVP1;Rat ventral prostate 1 like protein;Rat ventral prostate.1 protein homolog;RVP1;Ventral prostate.1 like protein;Ventral prostate.1 protein homolog

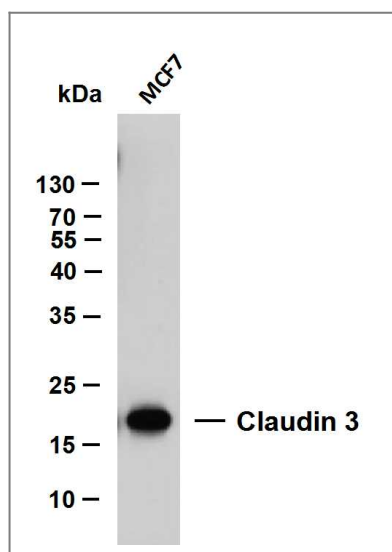
Organism	Gene ID	UniProt ID
Human	<a href="#">1365;</a>	<a href="#">O15551;</a>
Mouse	<a href="#">12739;</a>	<a href="#">Q9Z0G9;</a>
Rat	<a href="#">65130;</a>	<a href="#">Q63400;</a>

**Cellular Localization** Membranous

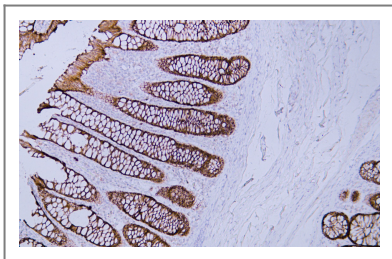
**Tissue specificity** Colon/ Appendix

**Function** Disease:Haploinsufficiency of CLDN3 may be the cause of certain cardiovascular and musculo-skeletal abnormalities observed in Williams-Beuren syndrome (WBS), a rare developmental disorder. It is a contiguous gene deletion syndrome involving genes from chromosome band 7q11.23.,Function:Plays a major role in tight junction-specific obliteration of the intercellular space, through calcium-independent cell-adhesion activity.,similarity:Belongs to the claudin family.,subunit:Can form homo- and heteropolymers with other CLDN. Homopolymers interact with CLDN1 and CLDN2 homopolymers. Directly interacts with TJP1/ZO-1, TJP2/ZO-2 and TJP3/ZO-3.,

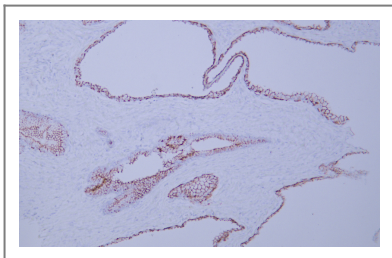
## Validation Data



MCF7 whole cell lysates were separated by 12% SDS-PAGE, and the membrane was blotted with anti-Claudin 3(ABT509) antibody. The HRP-conjugated Goat anti-Mouse IgG(H + L) antibody was used to detect the antibody. Lane 1: MCF7



Human colon tissue was stained with Anti-Claudin 3 (ABT509) Antibody



Human prostate tissue was stained with Anti-Claudin 3 (ABT509) Antibody

## Contact information

Orders: [order.cn@immunoway.com](mailto:order.cn@immunoway.com)  
Support: [support.cn@immunoway.com](mailto:support.cn@immunoway.com)  
Telephone: 400-8787-807(China)  
Website: <http://www.immunoway.com.cn>  
Address: 2200 Ringwood Ave San Jose, CA 95131 USA



Please scan the QR code  
to access additional  
product information:  
**Claudin 3 (ABT509)**  
**Mouse mAb**

For Research Use Only. Not for Use in Diagnostic Procedures.

[Antibody](#) | [ELISA Kits](#) | [Protein](#) | [Reagents](#)