

CD56 (ABT500) Mouse mAb

CatalogNo: YM4917 **Recombinant** 

Key Features

Host Species

- Mouse

Reactivity

- Human, Mouse, Rat

Applications

- IHC, WB, IF, ELISA

MW

- 95kD (Calculated)
- 100kD (Observed)

Isotype

- IgG1, Kappa

Recommended Dilution Ratios

IHC 1:200-1000

WB 1:500-2000

IF 1:100-500

ELISA 1:1000-5000

Storage

Storage* -15°C to -25°C/1 year (Do not lower than -25°C)**Formulation** PBS, 50% glycerol, 0.05% Proclin 300, 0.05% BSA

Basic Information

Clonality Monoclonal**Clone Number** ABT500

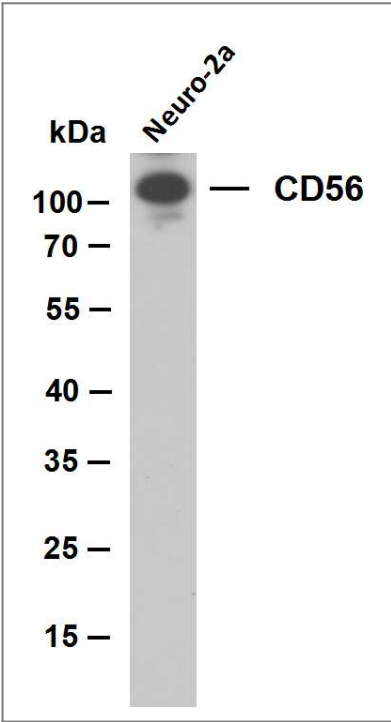
Immunogen Information

Immunogen Synthesized peptide derived from human CD56 AA range: 500-600**Specificity** The antibody can specifically recognize human CD56 protein.

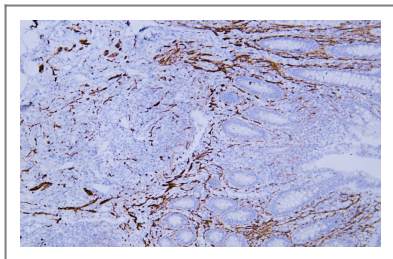
| Target Information

Gene name	NCAM1 NCAM		
Protein Name	antigen MSK39 identified by monoclonal 5.1H11;antigen recognized by monoclonal 5.1H11;CD56;cell adhesion molecule, neural, 1;MSK 39;MSK39;N-CAM-1;NCAM 1;NCAM;NCAM C;NCAM-1;NCAM1;NCAM1_HUMAN;NCAMC;Neural cell adhesion molecule 1;Neural cell adhesion molecule NCAM;OTTHUMP00000235666		
	Organism	Gene ID	UniProt ID
	Human	4684;	P13591;
	Mouse		P13595;
	Rat		P13596;
Cellular Localization	Membranous, Cytoplasmic		
Tissue specificity	Tonsil/ Appendix		
Function	Function:This protein is a cell adhesion molecule involved in neuron-neuron adhesion, neurite fasciculation, outgrowth of neurites, etc.,online information:N-CAM 140,online information:NCAM entry,similarity:Contains 2 fibronectin type-III domains.,similarity:Contains 5 Ig-like C2-type (immunoglobulin-like) domains.,		

| Validation Data



Whole cell lysates were separated by 10% SDS-PAGE, and the membrane was blotted with anti-CD56(ABT500) antibody. The HRP-conjugated Goat anti-Mouse IgG(H + L) antibody was used to detect the antibody. Lane 1: Neuro-2a



Human appendix tissue was stained with Anti-CD56 (ABT500) Antibody

| Contact information

Orders: order.cn@immunoway.com
Support: support.cn@immunoway.com
Telephone: 400-8787-807(China)
Website: <http://www.immunoway.com.cn>
Address: 2200 Ringwood Ave San Jose, CA 95131 USA



Please scan the QR code
to access additional
product information:
CD56 (ABT500)
Mouse mAb

For Research Use Only. Not for Use in Diagnostic Procedures.

[Antibody](#) | [ELISA Kits](#) | [Protein](#) | [Reagents](#)