

Actin (pan) (ABT-ACTN) Mouse mAb

CatalogNo: YM4914

Orthogonal Validated 

Key Features

Host Species

- Mouse

Reactivity

- Human, Mouse, Rat, Bovine, Pig, Chicken

Applications

- IHC, WB, IF, ELISA

MW

- 42kD (Observed)

Isotype

- IgG2a, Kappa

Recommended Dilution Ratios

IHC 1:200-1000

WB 1:500-2000

IF 1:100-500

ELISA 1:1000-5000

Storage

Storage* -15°C to -25°C/1 year(Do not lower than -25°C)**Formulation** PBS, 50% glycerol, 0.05% Proclin 300, 0.05%BSA

Basic Information

Clonality Monoclonal**Clone Number** ABT-ACTN

Immunogen Information

Immunogen Synthesized peptide derived from human Actin pan AA range: 300-377**Specificity** This antibody detects endogenous levels of all actins protein.

Target Information

Gene name ACTC1;ACTA1;ACTA2;ACTB;ACTG1;ACTG2

Protein Name Actin pan

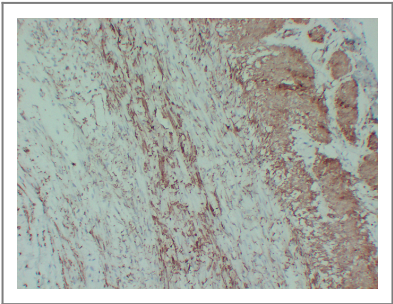
Organism	Gene ID	UniProt ID
Human	70 ; 58 ; 59 ; 60 ; 71 ; 72 ; ;	P62736 ; P68032 ; P60709 ; P63261 ; P68133 ; P63267 ;
Mouse	11475 ; 11464 ; 11465 ; 11468 ; 11459 ; 11461 ; ;	

Cellular Localization Cytoplasmic

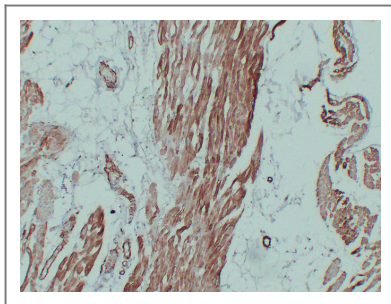
Tissue specificity B-cell lymphoma,Brain,Cajal-Retzius cell,Eye,Fetal brain cortex,Foreskin,Hepatocellular car

Function Disease:Defects in ACTB are a cause of dystonia juvenile-onset (DYTJ) [MIM:607371]. DYTJ is a form of dystonia with juvenile onset. Dystonia is defined by the presence of sustained involuntary muscle contraction, often leading to abnormal postures. DYTJ patients manifest progressive, generalized, dopa-unresponsive dystonia, developmental malformations and sensory hearing loss.,Function:Actins are highly conserved proteins that are involved in various types of cell motility and are ubiquitously expressed in all eukaryotic cells.,miscellaneous:In vertebrates 3 main groups of actin isoforms, alpha, beta and gamma have been identified. The alpha actins are found in muscle tissues and are a major constituent of the contractile apparatus. The beta and gamma actins coexist in most cell types as components of the cytoskeleton and as mediators of internal cell motility.,similarity:Belongs to the actin family.,subunit:Polymerization of globular actin (G-actin) leads to a structural filament (F-actin) in the form of a two-stranded helix. Each actin can bind to 4 others. Component of the BAF complex, which includes at least actin (ACTB), ARID1A, ARID1B/BAF250, SMARCA2, SMARCA4/BRG1, ACTL6A/BAF53, ACTL6B/BAF53B, SMARCE1/BAF57 SMARCC1/BAF155, SMARCC2/BAF170, SMARCB1/SNF5/INI1, and one or more of SMARCD1/BAF60A, SMARCD2/BAF60B, or SMARCD3/BAF60C. In muscle cells, the BAF complex also contains DPF3. Found in a complex with XPO6, Ran, ACTB and PFN1. Interacts with XPO6.,

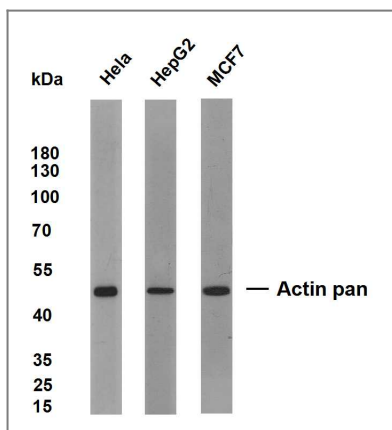
Validation Data



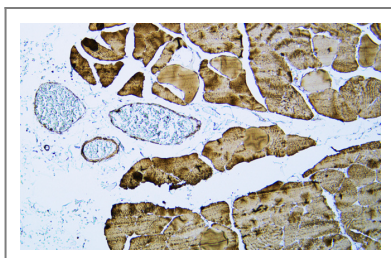
Human appendix tissue was stained with Anti-Actin pan (ABT-ACTN) Antibody



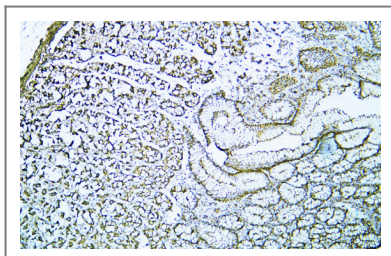
Human cardiac muscle tissue was stained with Anti-Actin pan (ABT-ACTN) Antibody



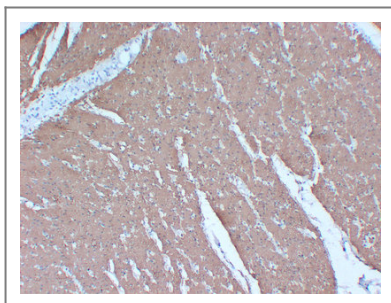
Various whole cell lysates were separated by 10% SDS-PAGE, and the membrane was blotted with anti-Actin(ABT-ACTN) antibody. The HRP-conjugated Goat anti-Mouse IgG(H + L) antibody was used to detect the antibody. Lane 1: HeLa Lane 2: HepG2 Lane 3: MCF7



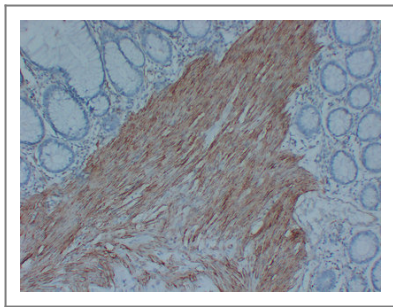
Human skeletal muscle tissue was stained with Anti-Actin pan (ABT-ACTN) Antibody



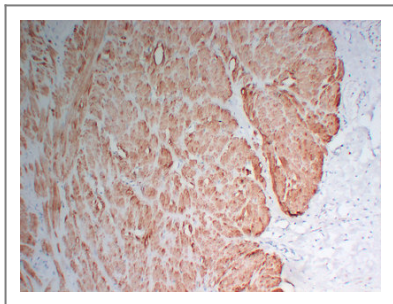
Human stomach tissue was stained with Anti-Actin pan (ABT-ACTN) Antibody



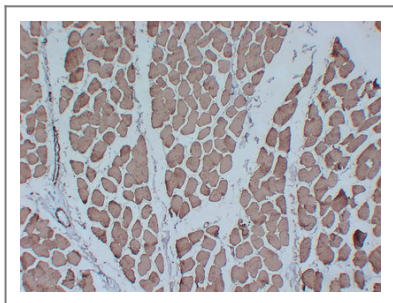
Immunohistochemical analysis of paraffin-embedded Colon. 1, Antibody was diluted at 1:200(4° overnight). 2, Citric acid ,pH6.0 was used for antigen retrieval. 3,Secondary antibody was diluted at 1:200(room temperature, 30min).



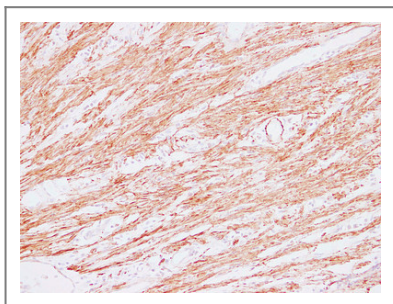
Immunohistochemical analysis of paraffin-embedded Colon. 1, Antibody was diluted at 1:200(4° overnight). 2, Citric acid ,pH6.0 was used for antigen retrieval. 3,Secondary antibody was diluted at 1:200(room temperature, 30min).



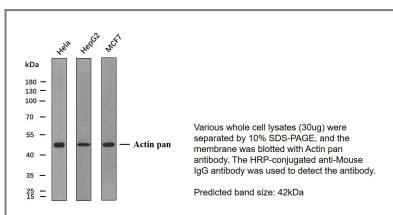
Immunohistochemical analysis of paraffin-embedded Colon. 1, Antibody was diluted at 1:200(4° overnight). 2, Citric acid ,pH6.0 was used for antigen retrieval. 3,Secondary antibody was diluted at 1:200(room temperature, 30min).



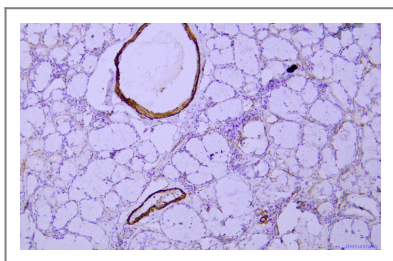
Immunohistochemical analysis of paraffin-embedded Skeletal muscle. 1, Antibody was diluted at 1:200(4° overnight). 2, Citric acid ,pH6.0 was used for antigen retrieval. 3,Secondary antibody was diluted at 1:200(room temperature, 30min).



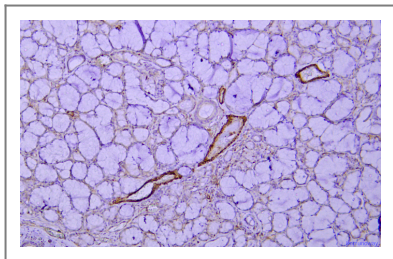
Immunohistochemical analysis of paraffin-embedded Colon. 1, Antibody was diluted at 1:200(4° overnight). 2, Citric acid ,pH6.0 was used for antigen retrieval. 3,Secondary antibody was diluted at 1:200(room temperature, 30min).



Western blot analysis of Actin-panAntibody at 1:1000 dilution.



Immunohistochemical analysis of paraffin-embedded human Salivary gland tonsils Antibody was diluted at 1:200(4° overnight).



Immunohistochemical analysis of paraffin-embedded human Salivary gland tonsils Antibody was diluted at 1:200(4° overnight).

| Contact information

Orders: order.cn@immunoway.com
Support: support.cn@immunoway.com
Telephone: 400-8787-807(China)
Website: <http://www.immunoway.com.cn>
Address: 2200 Ringwood Ave San Jose, CA 95131 USA



Please scan the QR code to access additional product information:
Actin (pan) (ABT-ACTN) Mouse mAb

For Research Use Only. Not for Use in Diagnostic Procedures.

[Antibody](#) | [ELISA Kits](#) | [Protein](#) | [Reagents](#)