

## MAGE-C1 (ABT339) Mouse mAb

CatalogNo: YM4898

### Key Features

**Host Species**

- Mouse

**Reactivity**

- Human

**Applications**

- IHC, WB, IF, ELISA

**MW**

- 124kD (Calculated)
- 180kD (Observed)

**Isotype**

- IgG1, Kappa

### Recommended Dilution Ratios

**IHC 1:200-1000****WB 1:500-2000****IF 1:100-500****ELISA 1:1000-5000**

### Storage

**Storage\*** -15°C to -25°C/1 year(Do not lower than -25°C)**Formulation** PBS, 50% glycerol, 0.05% Proclin 300, 0.05%BSA

### Basic Information

**Clonality** Monoclonal**Clone Number** ABT339

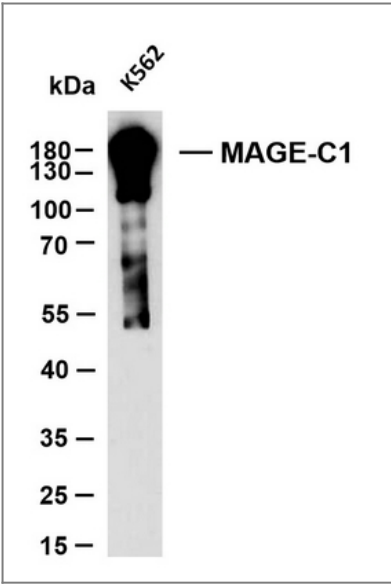
### Immunogen Information

**Immunogen** Synthesized peptide derived from human MAGE-C1 AA range: 700-800**Specificity** The antibody can specifically recognize human MAGE-C1 protein. In western blotting of K562 cell lysate, the antibody can label a 190 kDa band corresponding to MAGE-C1.

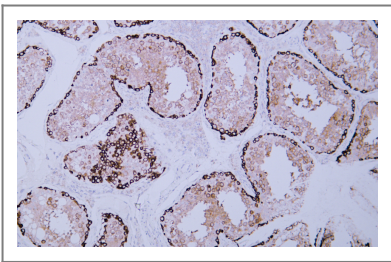
## Target Information

Gene name	MAGEC1		
Protein Name	MAGE-C1		
	Organism	Gene ID	UniProt ID
	Human	<a href="#">9947</a> ;	<a href="#">O60732</a> ;
Cellular Localization	Cytoplasmic		
Tissue specificity	Expressed in testis and in tumors of a wide variety of histologic types.		
Function	similarity:Contains 1 MAGE domain.,tissue specificity:Expressed in testis and in tumors of a wide variety of histologic types.,		

## Validation Data



K562 whole cell lysates were separated by 10% SDS-PAGE, and the membrane was blotted with anti-MAGE-C1(ABT339)antibody. The HRP-conjugated Goat anti-Mouse IgG(H + L) antibody was used to detect the antibody. Lane 1: K562



Human testis tissue was stained with Anti-MAGE-C1 (ABT339) Antibody

## Contact information

Orders: order.cn@immunoway.com  
Support: support.cn@immunoway.com  
Telephone: 400-8787-807(China)  
Website: <http://www.immunoway.com.cn>  
Address: 2200 Ringwood Ave San Jose, CA 95131 USA



Please scan the QR code  
to access additional  
product information:  
**MAGE-C1 (ABT339)**  
**Mouse mAb**

---

For Research Use Only. Not for Use in Diagnostic Procedures.

[Antibody](#) | [ELISA Kits](#) | [Protein](#) | [Reagents](#)