

TCL1 (ABT234) Mouse mAb

CatalogNo: YM4849

Key Features

Host Species

- Mouse

Reactivity

- Human,

Applications

- IHC, WB, IF, ELISA

MW

- 13kD (Calculated)
13kD (Observed)

Isotype

- IgG2a, Kappa

Recommended Dilution Ratios

IHC 1:200-1000**WB 1:500-2000****IF 1:100-500****ELISA 1:1000-5000**

Storage

Storage*

-15°C to -25°C/1 year(Do not lower than -25°C)

Formulation

PBS, 50% glycerol, 0.05% Proclin 300, 0.05%BSA

Basic Information

Clonality

Monoclonal

Clone Number

ABT234

Immunogen Information

Immunogen

Synthesized peptide derived from human TCL1 AA range: 50-114

Specificity

The antibody can specifically recognize human TCL1 protein.

| Target Information

Gene name TCL1A TCL1

Protein Name TCL1

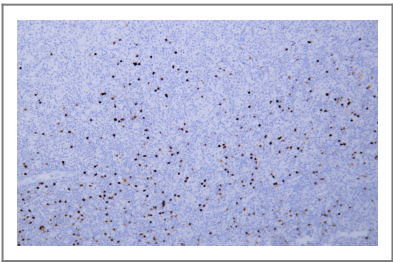
Organism	Gene ID	UniProt ID
Human	8115 ;	P56279 ;

Cellular Localization Cytoplasmic, Nuclear

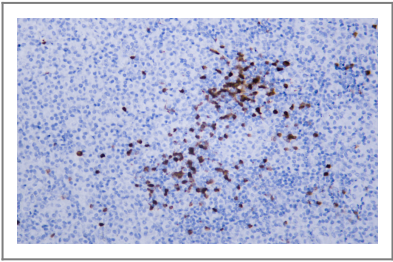
Tissue specificity Restricted in the T-cell lineage to immature thymocytes and activated peripheral lymphocytes. Preferentially expressed early in T- and B-lymphocyte differentiation.

Function Disease:Chromosomal aberrations activating TCL1A are found in chronic T-cell leukemias (T-CLL). Translocation t(14;14)(q11;q32); translocation t(7;14)(q35;q32); inversion inv(14)(q11;q32) that involves the T-cell receptor alpha/delta locuses.,Function:Enhances the phosphorylation and activation of AKT1, AKT2 and AKT3. Promotes nuclear translocation of AKT1. Enhances cell proliferation, stabilizes mitochondrial membrane potential and promotes cell survival.,similarity:Belongs to the TCL1 family.,subcellular location:Microsomal fraction.,subunit:Homodimer. Interacts with AKT1, AKT2 and AKT3 (via PH domain). Interacts with PNPT1; the interaction has no effect on PNPT1 exonuclease activity.,tissue specificity:Restricted in the T-cell lineage to immature thymocytes and activated peripheral lymphocytes. Preferentially expressed early in T- and B-lymphocyte differentiation.,

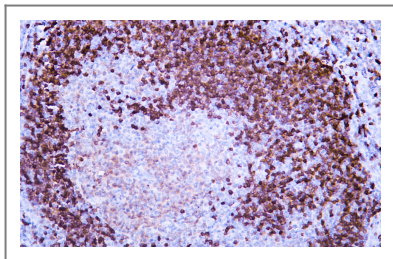
| Validation Data



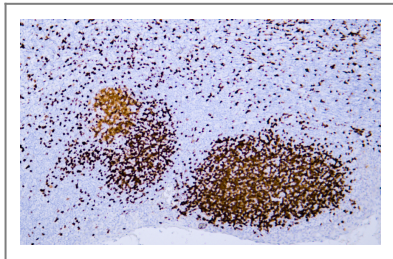
Human diffuse large B-cell lymphoma tissue was stained with Anti-TCL1 (ABT234) Antibody



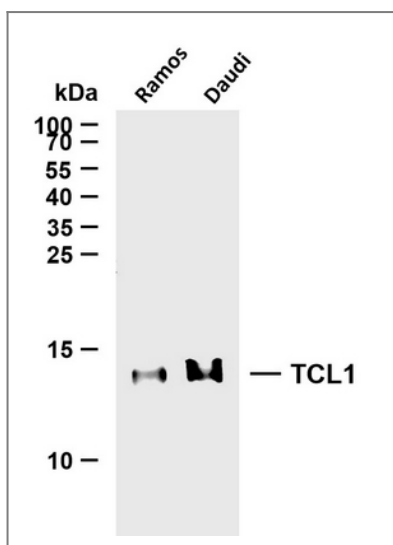
Human diffuse large B-cell lymphoma tissue was stained with Anti-TCL1 (ABT234) Antibody



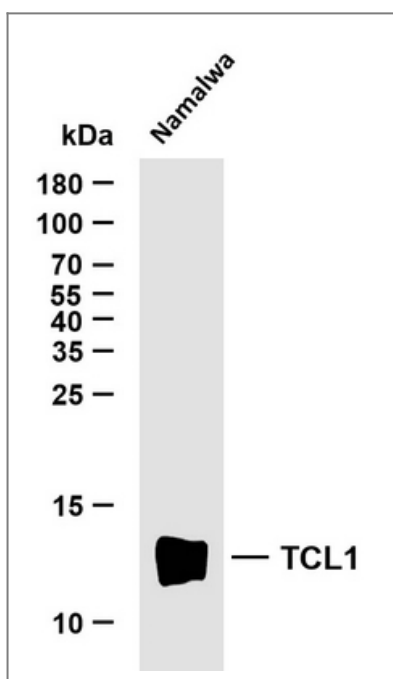
Human follicular lymphoma tissue was stained with Anti-TCL1 (ABT234) Antibody



Human tonsil tissue was stained with Anti-TCL1 (ABT234) Antibody



Various whole cell lysates were separated by 15% SDS-PAGE, and the membrane was blotted with anti-TCL1 (ABT234) antibody. The HRP-conjugated Goat anti-Mouse IgG(H + L) antibody was used to detect the antibody. Lane 1: Ramos Lane 2: Daudi



Whole cell lysates were separated by 15% SDS-PAGE, and the membrane was blotted with anti-TCL1 (ABT234) antibody. The HRP-conjugated Goat anti-Mouse IgG(H + L) antibody was used to detect the antibody. Lane 1: Namalwa

Orders: order.cn@immunoway.com
Support: support.cn@immunoway.com
Telephone: 400-8787-807(China)
Website: <http://www.immunoway.com.cn>
Address: 2200 Ringwood Ave San Jose, CA 95131 USA



Please scan the QR code
to access additional
product information:
TCL1 (ABT234)
Mouse mAb

For Research Use Only. Not for Use in Diagnostic Procedures.

[Antibody](#) | [ELISA Kits](#) | [Protein](#) | [Reagents](#)