

Cytokeratin 15 (ABT058) Mouse mAb

CatalogNo: YM4794

Key Features

Host Species

- Mouse

Reactivity

- Human

Applications

- IHC, WB, IF, ELISA

MW

- 49kD (Calculated)
- 49kD (Observed)

Isotype

- IgG1, Kappa

Recommended Dilution Ratios

IHC 1:200-1000**WB 1:500-2000****IF 1:100-500****ELISA 1:1000-5000**

Storage

Storage*

-15°C to -25°C/1 year(Do not lower than -25°C)

Formulation

PBS, 50% glycerol, 0.05% Proclin 300, 0.05%BSA

Basic Information

Clonality

Monoclonal

Clone Number

ABT058

Immunogen Information

Immunogen

Synthesized peptide derived from human CK15 AA range: 350-456

Specificity

The antibody can specifically recognize human CK15 protein. In immunohistochemistry on formalin-fixed, paraffin-embedded tissue sections, the antibody specifically labels the squamous epithelial cells and carcinomas, and shows no reaction with glandular epithelial cells.

| Target Information

Gene name KRT15 KRTB

Protein Name Cytokeratin-15

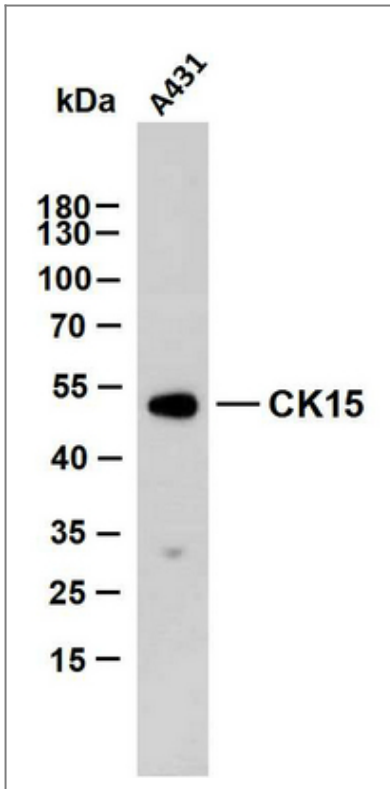
Organism	Gene ID	UniProt ID
Human	3866 ;	P19012 ;

Cellular Localization Cytoplasmic, Membranous

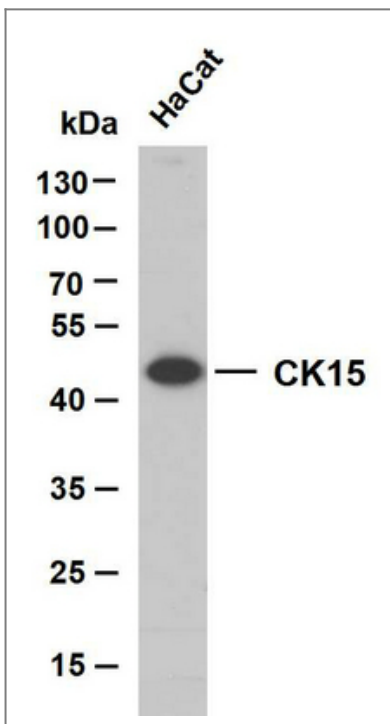
Tissue specificity Expressed in a discontinuous manner in the basal cell layer of adult skin epidermis, but continuously in the basal layer of fetal skin epidermis and nail. Also expressed in the outer root sheath above the hair bulb in hair follicle (at protein level). Expressed homogeneously in all cell layers of the esophagus and exocervix, but detected in the basal cell layer only of oral mucosa, skin and in the basal plus the next two layers of the suprabasal epithelium of the palate.

Function miscellaneous:There are two types of cytoskeletal and microfibrillar keratin: I (acidic; 40-55 kDa) and II (neutral to basic; 56-70 kDa).,similarity:Belongs to the intermediate filament family.,subunit:Heterotetramer of two type I and two type II keratins.,tissue specificity:Expressed in a discontinuous manner in the basal cell layer of adult skin epidermis, but continuously in the basal layer of fetal skin epidermis and nail. Also expressed in the outer root sheath above the hair bulb in hair follicle (at protein level). Expressed homogeneously in all cell layers of the esophagus and exocervix, but detected in the basal cell layer only of oral mucosa, skin and in the basal plus the next two layers of the suprabasal epithelium of the palate.,

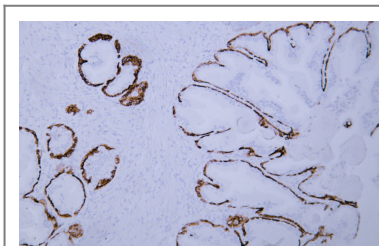
| Validation Data



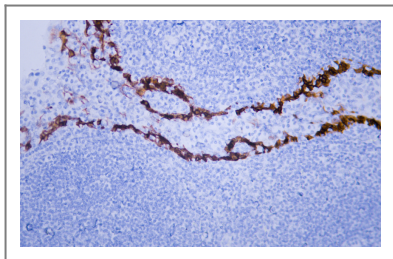
A431 whole cell lysates were separated by 10% SDS-PAGE, and the membrane was blotted with anti-CK15(ABT058) antibody. The HRP-conjugated Goat anti-Mouse IgG(H + L) antibody was used to detect the antibody. Lane 1: A431



HaCat whole cell lysates were separated by 10% SDS-PAGE, and the membrane was blotted with anti-CK15(ABT058) antibody. The HRP-conjugated Goat anti-Mouse IgG(H + L) antibody was used to detect the antibody. Lane 1: HaCat



Human prostate tissue was stained with Anti-Cytokeratin 15 (ABT058) Antibody



Human tonsil tissue was stained with Anti-Cytokeratin 15 (ABT058) Antibody

| Contact information

Orders: order.cn@immunoway.com
Support: support.cn@immunoway.com
Telephone: 400-8787-807(China)
Website: <http://www.immunoway.com.cn>
Address: 2200 Ringwood Ave San Jose, CA 95131 USA



Please scan the QR code
to access additional
product information:
**Cytokeratin 15
(ABT058) Mouse
mAb**

For Research Use Only. Not for Use in Diagnostic Procedures.

[Antibody](#) | [ELISA Kits](#) | [Protein](#) | [Reagents](#)