

## CD35 (ABT-CD35) Mouse mAb

CatalogNo: YM4779

### Key Features

#### Host Species

- Mouse

#### Reactivity

- Human,

#### Applications

- IHC, WB, IF, ELISA

#### MW

- 223kD (Calculated)  
250kD (Observed)

#### Isotype

- IgG1, Kappa

### Recommended Dilution Ratios

**IHC 1:200-1000**

**WB 1:500-2000**

**IF 1:100-500**

**ELISA 1:1000-5000**

### Storage

**Storage\*** -15°C to -25°C/1 year(Do not lower than -25°C)

**Formulation** PBS, 50% glycerol, 0.05% Proclin 300, 0.05%BSA

### Basic Information

**Clonality** Monoclonal

**Clone Number** ABT-CD35

### Immunogen Information

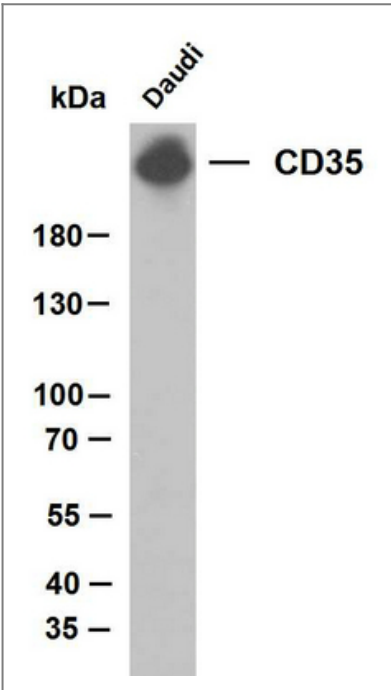
**Immunogen** Synthesized peptide derived from human CD35 AA range: 300-400

**Specificity** The antibody can specifically recognize human CD35 protein.

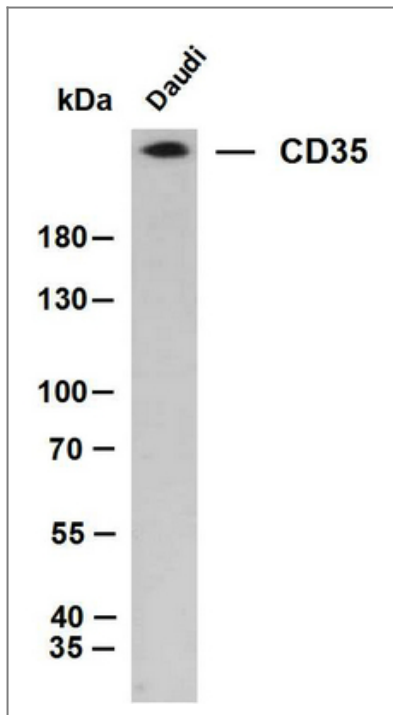
## Target Information

Gene name	CR1 C3BR		
Protein Name	Complement receptor type 1 (C3b/C4b receptor) (CD antigen CD35)		
	Organism	Gene ID	UniProt ID
	Human	<a href="#">1378</a> ;	<a href="#">P17927</a> ;
Cellular Localization	Membranous		
Tissue specificity	Present on erythrocytes, a subset of T cells, mature B cells, follicular dendritic cells, monocytes and granulocytes.		
Function	Function:Mediates cellular binding of particles and immune complexes that have activated complement.,miscellaneous:This is the sequence of the F allotype of CR1.,online information:Blood group antigen gene mutation database,polymorphism:CR1 contains a system of antigens called the Knops blood group system. Polymorphisms within this system are involved in malarial rosetting, a process associated with cerebral malaria, the major cause of mortality in Plasmodium falciparum malaria. Common Knops system antigens include McCoy (McC) and SI(a)/Vil (Kn4, or Swain-Langley; Vil or Villien). SI(a-) phenotype is more common in persons of African descent and may protect against fatal malaria.,similarity:Belongs to the receptors of complement activation (RCA) family.,similarity:Contains 30 Sushi (CCP/SCR) domains.,subunit:Monomer.,tissue specificity:Present on erythrocytes, leukocytes, glomerular podocytes, and splenic follicular dendritic cells.,		

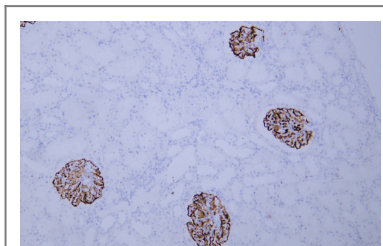
## Validation Data



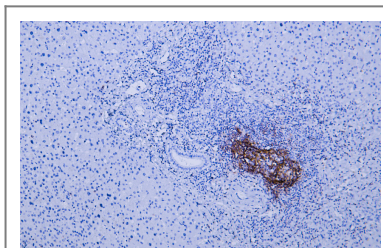
Whole cell lysates were separated by 10% SDS-PAGE, and the membrane was blotted with anti-CD35(ABT-CD35) antibody. The HRP-conjugated Goat anti-Mouse IgG(H + L) antibody was used to detect the antibody. Lane 1: Daudi



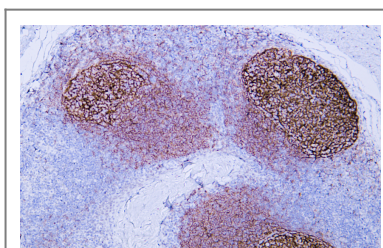
Whole cell lysates were separated by 10% SDS-PAGE, and the membrane was blotted with anti-CD35 (ABT-CD35) antibody. The HRP-conjugated Goat anti-Mouse IgG(H + L) antibody was used to detect the antibody. Lane 1: Daudi



Human kidney tissue was stained with Anti-CD35 (ABT-CD35) Antibody



Human liver tissue was stained with Anti-CD35 (ABT-CD35) Antibody



Human tonsil tissue was stained with Anti-CD35 (ABT-CD35) Antibody

## Contact information

Orders: order.cn@immunoway.com  
 Support: support.cn@immunoway.com  
 Telephone: 400-8787-807(China)  
 Website: <http://www.immunoway.com.cn>  
 Address: 2200 Ringwood Ave San Jose, CA 95131 USA



Please scan the QR code to access additional product information:  
**CD35 (ABT-CD35)**  
**Mouse mAb**

