

## PSMD11 (PTR1354) Mouse mAb

CatalogNo: YM4769

### Key Features

#### Host Species

- Mouse

#### Reactivity

- Human, Mouse, Rat,

#### Applications

- WB, IF, ELISA

#### MW

- 47kD (Calculated)
- 47kD (Observed)

#### Isotype

- IgG3, Kappa

### Recommended Dilution Ratios

**WB 1:500-2000**

**IF 1:100-500**

**ELISA 1:1000-5000**

### Storage

**Storage\*** -15°C to -25°C/1 year (Do not lower than -25°C)

**Formulation** PBS, 50% glycerol, 0.05% Proclin 300, 0.05% BSA

### Basic Information

**Clonality** Monoclonal

**Clone Number** PTR1354

### Immunogen Information

**Immunogen** Synthesized peptide derived from human protein. AA range: 250-350

**Specificity** This antibody detects endogenous levels of PSMD11.

## Target Information

**Gene name** PSMD11

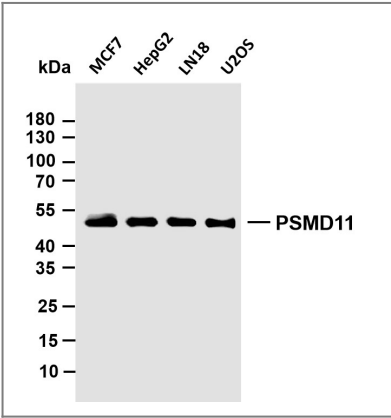
**Protein Name** 26S proteasome non-ATPase regulatory subunit 11

Organism	Gene ID	UniProt ID
Human	<a href="#">5717</a> ;	<a href="#">O00231</a> ;
Mouse	<a href="#">69077</a> ;	<a href="#">Q8BG32</a> ;

**Tissue specificity** Highly expressed in embryonic stem cells (ESCs). Expression decreases as ESCs differentiate.

**Function** Function:Acts as a regulatory subunit of the 26S proteasome which is involved in the ATP-dependent degradation of ubiquitinated proteins.,similarity:Belongs to the proteasome subunit S9 family.,similarity:Contains 1 PCI domain.,subunit:Component of the PA700 complex.,

## Validation Data



Various whole cell lysates were separated by 10% SDS-PAGE, and the membrane was blotted with anti-PSMD11 (PTR1354) antibody. The HRP-conjugated Goat anti-Mouse IgG(H + L) antibody was used to detect the antibody. Lane 1: MCF7 Lane 2: HepG2 Lane 3: LN18 Lane 4: U2OS

## Contact information

Orders: [order.cn@immunoway.com](mailto:order.cn@immunoway.com)

Support: [support.cn@immunoway.com](mailto:support.cn@immunoway.com)

Telephone: 400-8787-807(China)

Website: <http://www.immunoway.com.cn>

Address: 2200 Ringwood Ave San Jose, CA 95131 USA



Please scan the QR code to access additional product information:  
**PSMD11 (PTR1354)**  
**Mouse mAb**