

Pax-2 (PTR1301) Mouse mAb

CatalogNo: YM4710 **Recombinant** 

Key Features

Host Species

- Mouse

Reactivity

- Human

Applications

- IHC,IF,ELISA

MW

- 45kD (Calculated)

Isotype

- IgG1,Kappa

Storage

Storage* -15°C to -25°C/1 year(Do not lower than -25°C)**Formulation** PBS, 50% glycerol, 0.05% Proclin 300, 0.05%BSA

Recommended Dilution Ratios

IHC 1:200-1000**IF 1:100-500****ELISA 1:1000-5000**

Basic Information

Clonality Monoclonal**Clone Number** PTR1301

Immunogen Information

Immunogen Synthesized peptide derived from human PAX2. AA range: 150-250**Specificity** This antibody detects endogenous levels of PAX2 protein.

Target Information

Gene name PAX2

Protein Name Paired box protein Pax-2

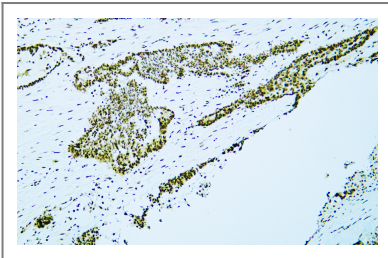
Organism	Gene ID	UniProt ID
Human	5076;	Q02962;
Mouse	18504;	P32114;

Cellular Localization Nuclear

Tissue specificity Expressed in primitive cells of the kidney, ureter, eye, ear and central nervous system.

Function Transcription factor that may have a role in kidney cell differentiation . Has a critical role in the development of the urogenital tract, the eyes, and the CNS.

Validation Data



Human ovarian serous carcinoma tissue was stained with Anti-PAX2 (PTR1301) Antibody

Contact information

Orders: order.cn@immunoway.com
Support: support.cn@immunoway.com
Telephone: 400-8787-807(China)
Website: <http://www.immunoway.com.cn>
Address: 2200 Ringwood Ave San Jose, CA 95131 USA



Please scan the QR code to access additional product information:
Pax-2 (PTR1301)
Mouse mAb

For Research Use Only. Not for Use in Diagnostic Procedures.

[Antibody](#) | [ELISA Kits](#) | [Protein](#) | [Reagents](#)