

LIMK-1/2 (PTR2545) Mouse mAb

CatalogNo: YM4686

Key Features

Host Species

- Mouse

Reactivity

- Human, Mouse, Rat,

Applications

- WB, IF, ELISA

MW

- 68kD, 72kD (Observed)

Isotype

- IgG1, Lambda

Recommended Dilution Ratios

WB 1:500-2000

IF 1:100-500

ELISA 1:1000-5000

Storage

Storage*

-15°C to -25°C/1 year(Do not lower than -25°C)

Formulation

PBS, 50% glycerol, 0.05% Proclin 300, 0.05%BSA

Basic Information

Clonality

Monoclonal

Clone Number

PTR2545

Immunogen Information

Immunogen

Synthesized peptide derived from human LIMK-1/2 AA range: 500-600

Specificity

This antibody detects endogenous levels of LIMK-1/2 protein.

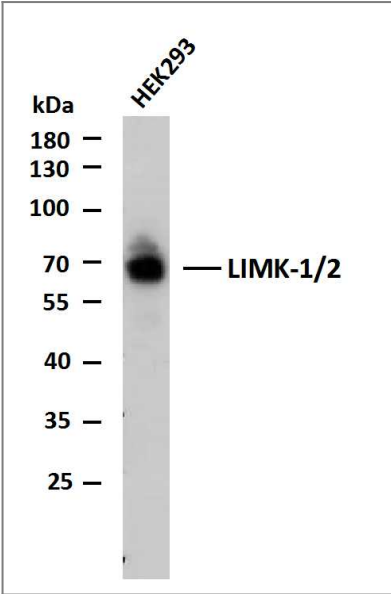
Target Information

Gene name	LIMK1 LIMK		
Protein Name	LIM domain kinase 1 (LIMK-1) (EC 2.7.11.1)		
	Organism	Gene ID	UniProt ID
	Human	3984 ; 3985 ;	P53667 ; P53671 ;
	Rat		P53669 ;

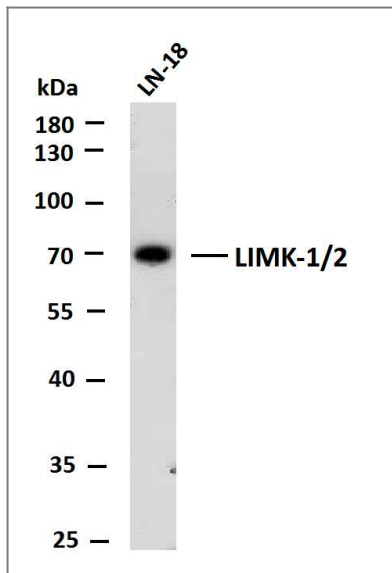
Tissue specificity Highest expression in both adult and fetal nervous system. Detected ubiquitously throughout the different regions of adult brain, with highest levels in the cerebral cortex. Expressed to a lesser extent in heart and skeletal muscle.

Function Catalytic activity:ATP + a protein = ADP + a phosphoprotein.,Disease:Haploinsufficiency of LIMK1 may be the cause of certain cardiovascular and musculo-skeletal abnormalities observed in Williams-Beuren syndrome (WBS), a rare developmental disorder. It is a contiguous gene deletion syndrome involving genes from chromosome band 7q11.23.,Function:Protein kinase which regulates actin filament dynamics. Phosphorylates and inactivates the actin binding/depolymerizing factor cofilin, thereby stabilizing the actin cytoskeleton. Isoform 3 has a dominant negative effect on actin cytoskeletal changes. May be involved in brain development.,PTM:Autophosphorylated.,PTM:Phosphorylated on serine and/or threonine residues by ROCK1. May be dephosphorylated and inactivated by SSH1.,similarity:Belongs to the protein kinase superfamily. TKL Ser/Thr protein kinase family.,similarity:Contains 1 PDZ (DHR) domain.,similarity:Contains 1 protein kinase domain.,similarity:Contains 2 LIM zinc-binding domains.,subunit:Self-associates. The LIM domain interacts with the cytoplasmic domain of NRG1. Binds ROCK1. Interacts with SSH1. Interacts with NISCH.,tissue specificity:Highest expression in both adult and fetal nervous system. Detected ubiquitously throughout the different regions of adult brain, with highest levels in the cerebral cortex. Expressed to a lesser extent in heart and skeletal muscle.,

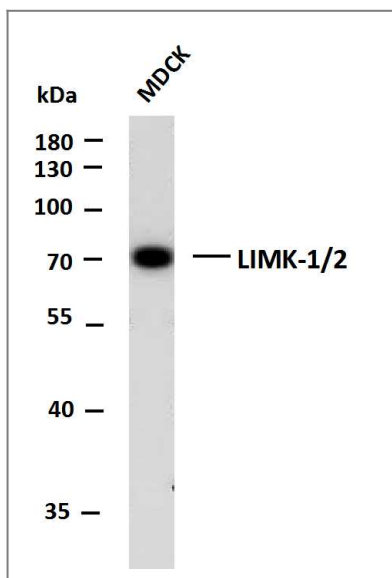
Validation Data



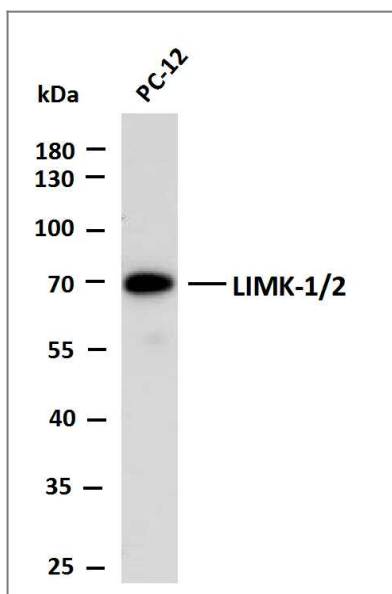
Whole cell lysates of HEK293 were separated by 10% SDS-PAGE, and the membrane was blotted with anti-LIMK-1/2(PTR2545) antibody. The HRP-conjugated Goat anti-Mouse IgG(H + L) antibody was used to detect the antibody. Lane 1: HEK293



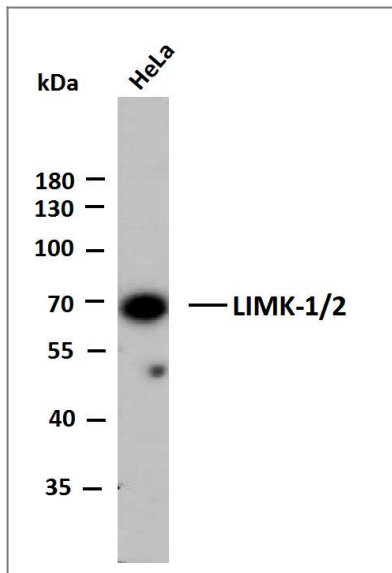
Whole cell lysates of LN-18 were separated by 10% SDS-PAGE, and the membrane was blotted with anti-LIMK-1/2(PTR2545) antibody. The HRP-conjugated Goat anti-Mouse IgG(H + L) antibody was used to detect the antibody. Lane 1: LN-18



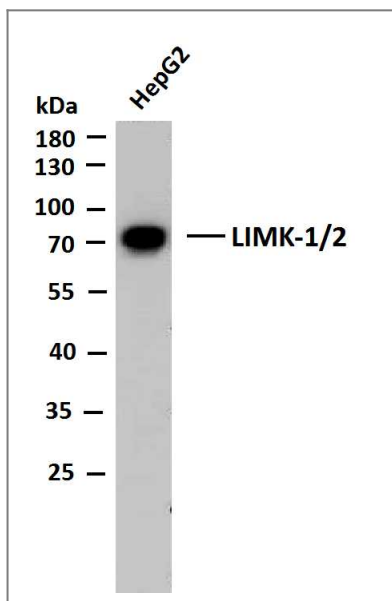
Whole cell lysates of MDCK were separated by 10% SDS-PAGE, and the membrane was blotted with anti-LIMK-1/2(PTR2545) antibody. The HRP-conjugated Goat anti-Mouse IgG(H + L) antibody was used to detect the antibody. Lane 1: MDCK



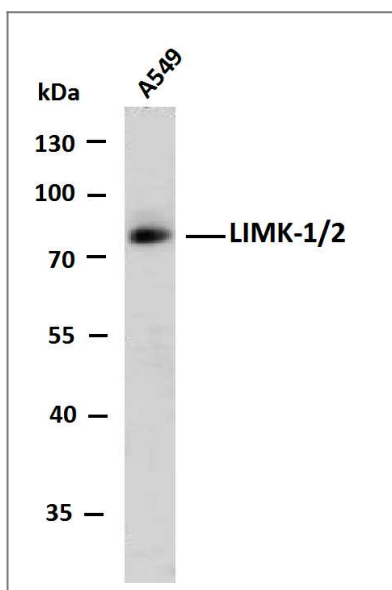
Whole cell lysates of PC-12 were separated by 10% SDS-PAGE, and the membrane was blotted with anti-LIMK-1/2(PTR2545) antibody. The HRP-conjugated Goat anti-Mouse IgG(H + L) antibody was used to detect the antibody. Lane 1: PC-12



Whole cell lysates of HeLa were separated by 10% SDS-PAGE, and the membrane was blotted with anti-LIMK-1/2 antibody. The HRP-conjugated Goat anti-Mouse IgG(H + L) antibody was used to detect the antibody. Lane 1: HeLa



Whole cell lysates of HepG2 were separated by 10% SDS-PAGE, and the membrane was blotted with anti-LIMK-1/2 antibody. The HRP-conjugated Goat anti-Mouse IgG(H + L) antibody was used to detect the antibody. Lane 1: HepG2



Whole cell lysates of A549 were separated by 10% SDS-PAGE, and the membrane was blotted with anti-LIMK-1/2 antibody. The HRP-conjugated Goat anti-Mouse IgG(H + L) antibody was used to detect the antibody. Lane 1: A549

Orders: order.cn@immunoway.com
Support: support.cn@immunoway.com
Telephone: 400-8787-807(China)
Website: <http://www.immunoway.com.cn>
Address: 2200 Ringwood Ave San Jose, CA 95131 USA



Please scan the QR code
to access additional
product information:
LIMK-1/2 (PTR2545)
Mouse mAb

For Research Use Only. Not for Use in Diagnostic Procedures.

[Antibody](#) | [ELISA Kits](#) | [Protein](#) | [Reagents](#)