

Sodium Potassium ATPase (PTR2543) Mouse mAb

CatalogNo: YM4684

Key Features

Host Species

- Mouse

Reactivity

- Human, Mouse, Rat,

Applications

- IHC, IF, ELISA

Isotype

- IgG3, Kappa

Recommended Dilution Ratios

IHC 1:200-1000

IF 1:100-500

ELISA 1:1000-5000

Storage

Storage* -15°C to -25°C/1 year (Do not lower than -25°C)

Formulation PBS, 50% glycerol, 0.05% Proclin 300, 0.05% BSA

Basic Information

Clonality Monoclonal

Clone Number PTR2543

Immunogen Information

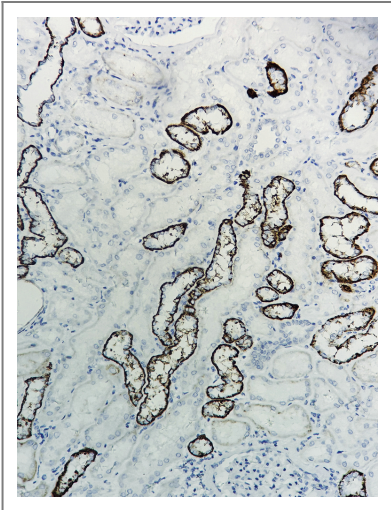
Immunogen Synthesized peptide derived from human Sodium Potassium ATPase AA range: 150-250

Specificity This antibody detects endogenous levels of Sodium Potassium ATPase protein.

Target Information

Gene name	ATP1A1		
Protein Name	Sodium/potassium-transporting ATPase subunit alpha-1 (Na(+)/K(+) ATPase alpha-1 subunit) (Sodium pump subunit alpha-1)		
	Organism	Gene ID	UniProt ID
	Human		P05023 ; P50993 ; P13637 ; Q13733 ;
	Rat	24211 ;	P06685 ;
Cellular Localization	Membranous		
Function	Catalytic activity:ATP + H(2)O + Na(+)(In) + K(+)(Out) = ADP + phosphate + Na(+)(Out) + K(+)(In).,Function:This is the catalytic component of the active enzyme, which catalyzes the hydrolysis of ATP coupled with the exchange of sodium and potassium ions across the plasma membrane. This action creates the electrochemical gradient of sodium and potassium ions, providing the energy for active transport of various nutrients.,PTM:Phosphorylation on Tyr-10 modulates pumping activity.,similarity:Belongs to the cation transport ATPase (P-type) family.,similarity:Belongs to the cation transport ATPase (P-type) family. Type IIC subfamily.,subcellular location:Identified by mass spectrometry in melanosome fractions from stage I to stage IV.,subunit:Composed of three subunits: alpha (catalytic), beta and gamma. Binds the HLA class II histocompatibility antigen, DR1.,		

Validation Data



Human kidney tissue was stained with Anti-Sodium Potassium ATPase (PTR2543) Antibody

Contact information

Orders: order.cn@immunoway.com
Support: support.cn@immunoway.com
Telephone: 400-8787-807(China)
Website: <http://www.immunoway.com.cn>
Address: 2200 Ringwood Ave San Jose, CA 95131 USA



Please scan the QR code
to access additional
product information:
**Sodium Potassium
ATPase (PTR2543)
Mouse mAb**

For Research Use Only. Not for Use in Diagnostic Procedures.

[Antibody](#) | [ELISA Kits](#) | [Protein](#) | [Reagents](#)