

NeuN (PTR1373) Mouse mAb

CatalogNo: YM4669 **Recombinant** 

Key Features

Host Species

- Mouse

Reactivity

- Human

Applications

- WB,IHC,IF,ELISA

MW

- 34kD (Calculated)
46kD,48kD (Observed)

Isotype

- IgG2a,Kappa

Storage

Storage* -15°C to -25°C/1 year(Do not lower than -25°C)**Formulation** PBS, 50% glycerol, 0.05% Proclin 300, 0.05%BSA

Recommended Dilution Ratios

IHC 1:200-1000**WB 1:500-2000.IF 1:100-500.ELISA 1:1000-5000.**

Basic Information

Clonality Monoclonal**Clone Number** PTR1373

Immunogen Information

Immunogen Synthesized peptide derived from human protein. AA range:200-300**Specificity** This antibody detects endogenous levels of Nuclear protein(NeuN) protein.

Target Information

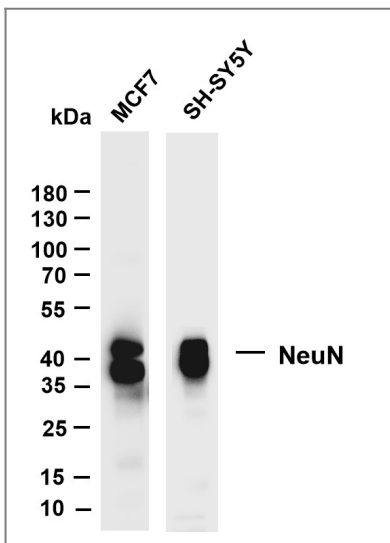
Gene name RBFOX3

Protein Name RNA binding protein fox-1 homolog 3 (Fox-1 homolog C)

Organism	Gene ID	UniProt ID
Human	146713 ;	A6NFN3 ;

Cellular Localization Cytoplasmic, Nuclear

Validation Data



Various whole cell lysates were separated by 4%-20% SDS-PAGE, and the membrane was blotted with anti-Nuclear protein(NeuN) (PTR1373) antibody. The HRP-conjugated Goat anti-Mouse IgG(H + L) antibody was used to detect the antibody. Lane 1: MCF7 Lane 2: SH-SY5Y Predicted band size: 34kDa Observed band size: 40kDa

Contact information

Orders: order.cn@immunoway.com
Support: support.cn@immunoway.com
Telephone: 400-8787-807(China)
Website: <http://www.immunoway.com.cn>
Address: 2200 Ringwood Ave San Jose, CA 95131 USA



Please scan the QR code to access additional product information:
NeuN (PTR1373) Mouse mAb

For Research Use Only. Not for Use in Diagnostic Procedures.

[Antibody](#) | [ELISA Kits](#) | [Protein](#) | [Reagents](#)