

## ERK 1 (PTR1168) Mouse mAb

CatalogNo: YM4395 **Recombinant**   
**Orthogonal Validated** 

### Key Features

#### Host Species

- Mouse

#### Reactivity

- Human, Mouse, Rat

#### Applications

- WB, IF, ELISA

#### MW

- 43kD (Calculated)  
44kD (Observed)

#### Isotype

- IgG1, Kappa

### Storage

**Storage\*** -15°C to -25°C/1 year (Do not lower than -25°C)

**Formulation** PBS, 50% glycerol, 0.05% Proclin 300, 0.05% BSA

### Recommended Dilution Ratios

**WB 1:500-2000**

**IF 1:100-500**

**ELISA 1:1000-5000**

### Basic Information

**Clonality** Monoclonal

**Clone Number** PTR1168

### Immunogen Information

**Immunogen** Synthesized peptide derived from human ERK 1 AA range: 150-250

**Specificity** This antibody detects endogenous levels of ERK 1.

## Target Information

**Gene name** MAPK3 ERK1 PRKM3

**Protein Name** Mitogen-activated protein kinase 3 (MAP kinase 3) (MAPK 3) (ERT2) (Extracellular signal-regulated kinase 1) (ERK-1) (Insulin-stimulated MAP2 kinase) (MAP kinase isoform p44) (p44-MAPK) (Microtubule-associated protein 2 kinase) (p44-ERK1)

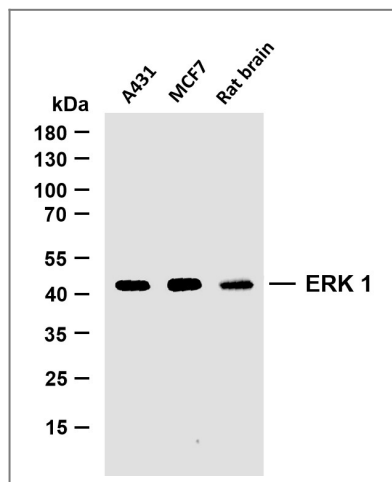
Organism	Gene ID	UniProt ID
Human	<a href="#">5595</a> ;	<a href="#">P27361</a> ;
Mouse	<a href="#">26417</a> ;	<a href="#">Q63844</a> ;
Rat	<a href="#">50689</a> ;	<a href="#">P21708</a> ;

**Cellular Localization** Cytoplasmic , Nuclear

**Tissue specificity** Epithelium ,Eye ,Hepatoma ,Human cervix ,Lymph ,

**Function** Catalytic activity:ATP + a protein = ADP + a phosphoprotein. ,cofactor:Magnesium. ,Domain:The TXY motif contains the threonine and tyrosine residues whose phosphorylation activates the MAP kinases. ,enzyme regulation:Activated by tyrosine phosphorylation in response to insulin and NGF. ,Function:Involved in both the initiation and regulation of meiosis , mitosis , and postmitotic functions in differentiated cells by phosphorylating a number of transcription factors such as ELK-1. Phosphorylates EIF4EBP1; required for initiation of translation. Phosphorylates microtubule-associated protein 2 (MAP2) . Phosphorylates SPZ1 (By similarity) . Phosphorylates heat shock factor protein 4 (HSF4) . ,PTM:Dually phosphorylated on Thr-202 and Tyr-204 , which activates the enzyme. ,similarity:Belongs to the protein kinase superfamily. ,similarity:Belongs to the protein kinase superfamily. CMGC Ser/Thr protein kinase family. MAP kinase subfamily. ,similarity:Contains 1 protein kinase domain. ,subunit:Interacts with MORG1 (By similarity) . Binds to HIV-1 Nef. This interaction inhibits its kinase activity. Interacts with HSF4 and NISCH. ,

## Validation Data



Various whole cell lysates were separated by 10% SDS-PAGE, and the membrane was blotted with anti-ERK 1 (PTR1168) antibody. The HRP-conjugated Goat anti-Mouse IgG (H + L) antibody was used to detect the antibody. Lane 1: A431 Lane 2: MCF7 Lane 3: Rat brain

## | Contact information

Orders: order.cn@immunoway.com  
Support: support.cn@immunoway.com  
Telephone: 400-8787-807(China)  
Website: <http://www.immunoway.com.cn>  
Address: 2200 Ringwood Ave San Jose, CA 95131 USA



Please scan the QR code  
to access additional  
product information:  
**ERK 1 (PTR1168)**  
**Mouse mAb**

---

For Research Use Only. Not for Use in Diagnostic Procedures.

[Antibody](#) | [ELISA Kits](#) | [Protein](#) | [Reagents](#)