

PSCA (PT2119) Mouse mAb

CatalogNo: YM4298 **Recombinant** 

Key Features

Host Species

- Mouse

Reactivity

- Human

Applications

- WB,IF,ELISA

MW

- 13kD (Calculated)
- 18kD (Observed)

Isotype

- IgG2b,Kappa

Storage

Storage* -15°C to -25°C/1 year(Do not lower than -25°C)**Formulation** PBS, 50% glycerol, 0.05% Proclin 300, 0.05%BSA

Recommended Dilution Ratios

WB 1:500-2000**IF 1:100-500****ELISA 1:1000-5000**

Basic Information

Clonality Monoclonal**Clone Number** PT2119

Immunogen Information

Immunogen Synthesized peptide derived from human PSCA AA range: 1-100**Specificity** This antibody detects endogenous levels of PSCA protein.

Target Information

Gene name PSCA UNQ206/PRO232

Protein Name Prostate stem cell antigen

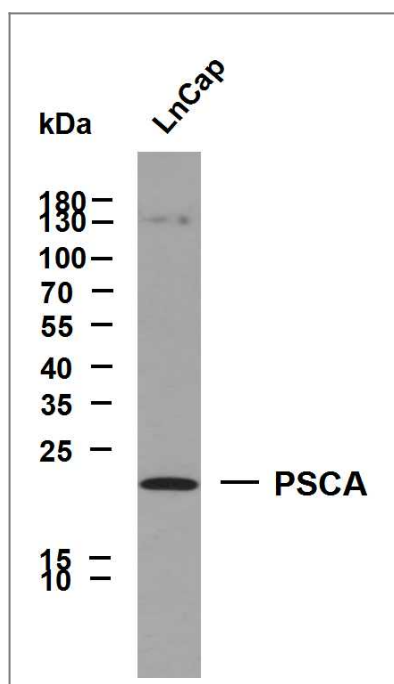
Organism	Gene ID	UniProt ID
Human	8000 ;	O43653 ;
Mouse		P57096 ;

Cellular Localization Cytoplasmic

Tissue specificity Highly expressed in prostate (basal, secretory and neuroendocrine epithelium cells). Also found in bladder (transitional epithelium), placenta (trophoblasts), stomach (neuroendocrine cells), colon (neuroendocrine cells) and kidney (collecting ducts). Overexpressed in prostate cancers and expression is correlated with tumor stage, grade and androgen-independence. Highly expressed in prostate cancer bone metastases. Expressed in gastric epithelial cells, mainly in the isthmus (at protein level). Not detected in normal intestinal epithelium (at protein level). Expressed in brain cortex; expression is significantly increased in the front cortex of Alzheimer disease patients.

Function May be involved in the regulation of cell proliferation. Has a cell-proliferation inhibition activity in vitro. ; May act as a modulator of nicotinic acetylcholine receptors (nAChRs) activity. In vitro inhibits nicotine-induced signaling probably implicating alpha-3:beta-2- or alpha-7-containing nAChRs.

Validation Data



Whole cell lysates were separated by 12% SDS-PAGE, and the membrane was blotted with anti-SMMHC (PT2119) antibody. The HRP-conjugated anti-Mouse IgG antibody was used to detect the antibody. Lane 1: LnCap

| Contact information

Orders: order.cn@immunoway.com
Support: support.cn@immunoway.com
Telephone: 400-8787-807(China)
Website: <http://www.immunoway.com.cn>
Address: 2200 Ringwood Ave San Jose, CA 95131 USA



Please scan the QR code
to access additional
product information:
PSCA (PT2119)
Mouse mAb

For Research Use Only. Not for Use in Diagnostic Procedures.

[Antibody](#) | [ELISA Kits](#) | [Protein](#) | [Reagents](#)