

β-Tubulin (PTR1389) Mouse mAb

CatalogNo: YM4241

Key Features

Host Species

- Mouse

Reactivity

- Human, Mouse, Rat, Pig,

Applications

- WB, IF, ELISA

MW

- 50kD (Calculated)
50kD (Observed)

Recommended Dilution Ratios

WB 1:500-2000**IF 1:100-500****ELISA 1:1000-5000**

Storage

Storage*

-15°C to -25°C/1 year(Do not lower than -25°C)

Formulation

PBS, 50% glycerol, 0.05% Proclin 300, 0.05%BSA

Basic Information

Clonality

Monoclonal

Clone Number

PTR1389

Immunogen Information

Immunogen

AA range: 400-500

Specificity

This antibody detects endogenous levels of Beta Tubulin protein.

Target Information

Gene name TUBB

Protein Name Tubulin beta chain (Tubulin beta-5 chain)

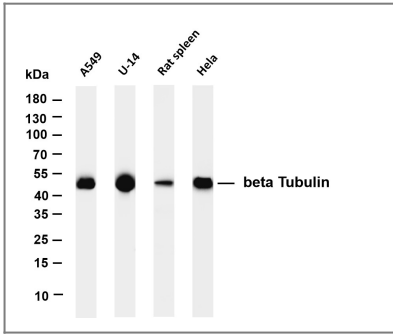
| Organism | Gene ID | UniProt ID |
|----------|--------------------------|--------------------------|
| Human | 203068 ; | P07437 ; |
| Mouse | | P99024 ; |
| Rat | | P69897 ; |

Cellular Localization Cytoplasm

Tissue specificity Ubiquitously expressed with highest levels in spleen, thymus and immature brain.

Function Domain:The highly acidic C-terminal region may bind cations such as calcium.,Function:Tubulin is the major constituent of microtubules. It binds two moles of GTP, one at an exchangeable site on the beta chain and one at a non-exchangeable site on the alpha-chain.,online information:Tubulin entry,similarity:Belongs to the tubulin family.,subunit:Dimer of alpha and beta chains.,tissue specificity:Ubiquitously expressed with highest levels in spleen, thymus and immature brain.,

Validation Data



Various whole cell lysates were separated by 4-20% SDS-PAGE, and the membrane was blotted with anti-beta Tubulin (PTR1389) antibody. The HRP-conjugated Goat anti-Rabbit IgG(H + L) antibody was used to detect the antibody. Lane 1: A549 Lane 2: U-14 Lane 3: Rat spleen Lane 4: HeLa
Predicted band size: 50kDa Observed band size: 50kDa

Contact information

Orders: order.cn@immunoway.com
Support: support.cn@immunoway.com
Telephone: 400-8787-807(China)
Website: <http://www.immunoway.com.cn>
Address: 2200 Ringwood Ave San Jose, CA 95131 USA



Please scan the QR code to access additional product information:
β-Tubulin (PTR1389) Mouse mAb

