

p21 (PTR2559) Mouse mAb

CatalogNo: YM3802

| Key Features

Host Species

- Mouse

Reactivity

- Human, Mouse,

Applications

- IHC, WB, IF, ELISA

MW

- 21kD (Calculated)
21kD (Observed)

Isotype

- IgG1, Kappa

| Recommended Dilution Ratios

IHC 1:200-1000

WB 1:500-2000

IF 1:100-500

ELISA 1:1000-5000

| Storage

Storage* -15°C to -25°C/1 year(Do not lower than -25°C)

Formulation PBS, 50% glycerol, 0.05% Proclin 300, 0.05%BSA

| Basic Information

Clonality Monoclonal

Clone Number PTR2559

| Immunogen Information

Immunogen Synthesized peptide derived from human p21 AA range: 1-100

Specificity This antibody detects endogenous levels of p21 protein.

Target Information

Gene name CDKN1A CAP20 CDKN1 CIP1 MDA6 PIC1 SDI1 WAF1

Protein Name p21

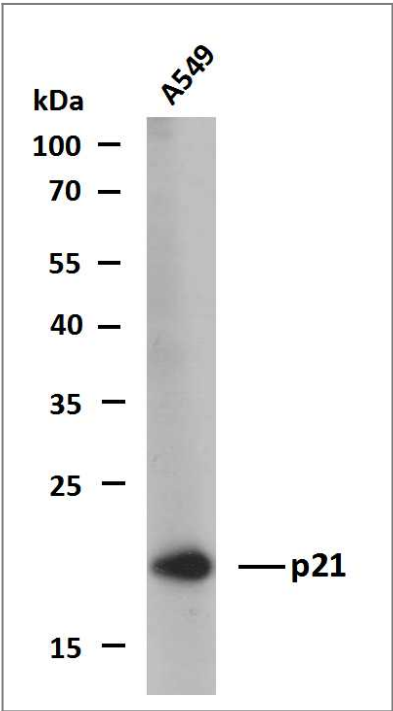
Organism	Gene ID	UniProt ID
Human	1026 ;	P38936 ;
Mouse	12575 ;	P39689 ;

Cellular Localization Cytoplasmic, Nuclear

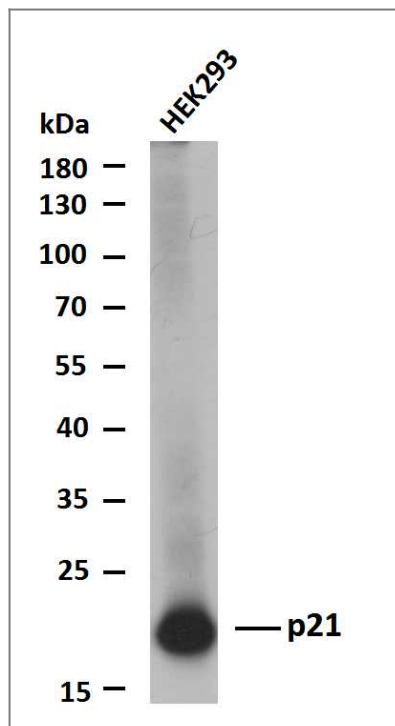
Tissue specificity Expressed in all adult tissues, with 5-fold lower levels observed in the brain.

Function Function:May be the important intermediate by which p53 mediates its role as an inhibitor of cellular proliferation in response to DNA damage. Binds to and inhibits cyclin-dependent kinase activity, preventing phosphorylation of critical cyclin-dependent kinase substrates and blocking cell cycle progression.,induction:By p53, mezerein (antileukemic compound) and interferon beta.,PTM:Phosphorylation of Thr-145 by Akt or of Ser-146 by PKC impairs binding to PCNA.,similarity:Belongs to the CDI family.,tissue specificity:Expressed in all adult human tissues, with 5-fold lower levels observed in the brain.,

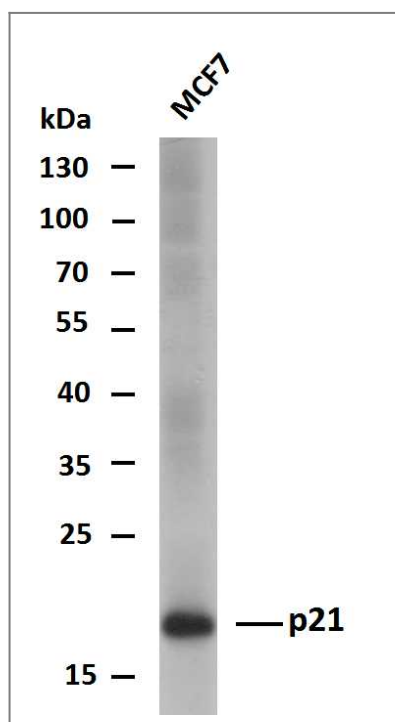
Validation Data



Whole cell lysates of A549 were separated by 12% SDS-PAGE, and the membrane was blotted with anti-p21(PTR2559) antibody. The HRP-conjugated Goat anti-Mouse IgG(H + L) antibody was used to detect the antibody. Lane 1: A549



Whole cell lysates of HEK293 were separated by 12% SDS-PAGE, and the membrane was blotted with anti-p21(PTR2559) antibody. The HRP-conjugated Goat anti-Mouse IgG(H + L) antibody was used to detect the antibody. Lane 1: HEK293



Whole cell lysates of MCF7 were separated by 12% SDS-PAGE, and the membrane was blotted with anti-p21(PTR2559) antibody. The HRP-conjugated Goat anti-Mouse IgG(H + L) antibody was used to detect the antibody. Lane 1: MCF7

Contact information

Orders: order.cn@immunoway.com
 Support: support.cn@immunoway.com
 Telephone: 400-8787-807(China)
 Website: <http://www.immunoway.com.cn>
 Address: 2200 Ringwood Ave San Jose, CA 95131 USA



Please scan the QR code to access additional product information:
p21 (PTR2559)
Mouse mAb

