

## Claudin-2 (8H11) Mouse mAb

CatalogNo: YM3796

Orthogonal Validated 

### Key Features

#### Host Species

- Mouse

#### Reactivity

- Human, Mouse, Rat

#### Applications

- WB, IF, IHC

#### MW

- 25kD (Observed)

### Recommended Dilution Ratios

WB 1:500-2000

IF/ICC 1:200-400

IHC

### Storage

**Storage\*** -15°C to -25°C/1 year (Do not lower than -25°C)**Formulation** Liquid in PBS containing 50% glycerol, 0.5% BSA and 0.02% sodium azide.

### Basic Information

**Clonality** Monoclonal**Clone Number** 8H11

### Immunogen Information

**Immunogen** Synthesized peptide derived from human Claudin-2**Specificity** This antibody detects endogenous levels of human Claudin-2

## | Target Information

**Gene name** CLDN2 PSEC0059 SP82 UNQ705/PRO1356

**Protein Name** Claudin-2

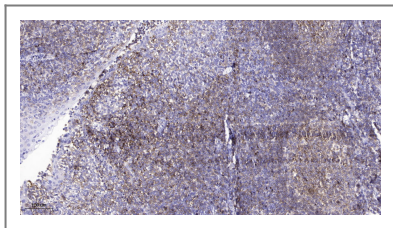
Organism	Gene ID	UniProt ID
Human	<a href="#">9075</a> ;	<a href="#">P57739</a> ;

**Cellular Localization** Cell junction, tight junction . Cell membrane ; Multi-pass membrane protein .

**Tissue specificity** Colon,Colon epithelium,Kidney,Skin,Teratocarcinoma,Thalamus,

**Function** Function:Plays a major role in tight junction-specific obliteration of the intercellular space, through calcium-independent cell-adhesion activity.,similarity:Belongs to the claudin family.,subunit:Can form homo- and heteropolymers with other CLDN. Homopolymers interact with CLDN3, but not CLDN1, homopolymers. Directly interacts with TJP1/ZO-1, TJP2/ZO-2 and TJP3/ZO-3.,

## | Validation Data



Immunohistochemical analysis of paraffin-embedded human tonsil. 1, Antibody was diluted at 1:200(4° overnight). 2, Tris-EDTA,pH9.0 was used for antigen retrieval. 3,Secondary antibody was diluted at 1:200(room temperature, 45min).

## | Contact information

Orders: order.cn@immunoway.com  
Support: support.cn@immunoway.com  
Telephone: 400-8787-807(China)  
Website: <http://www.immunoway.com.cn>  
Address: 2200 Ringwood Ave San Jose, CA 95131 USA



Please scan the QR code to access additional product information:  
**Claudin-2 (8H11)**  
**Mouse mAb**

For Research Use Only. Not for Use in Diagnostic Procedures.

[Antibody](#) | [ELISA Kits](#) | [Protein](#) | [Reagents](#)