

## Gamma Tubulin (6C12) Mouse mAb

CatalogNo: YM3653

### Key Features

#### Host Species

- Mouse

#### Reactivity

- Human,Rat,Mouse

#### Applications

- WB,IHC,IF

#### MW

- 50kD (Observed)

### Recommended Dilution Ratios

**WB 1:1000-2000**

**IHC 1:100-200**

**IF 1:50-200**

### Storage

**Storage\*** -15°C to -25°C/1 year(Do not lower than -25°C)

**Formulation** Liquid in PBS containing 50% glycerol, 0.5% BSA and 0.02% sodium azide.

### Basic Information

**Clonality** Monoclonal

**Clone Number** 6C12

### Immunogen Information

**Immunogen** Synthetic Peptide of Gamma Tubulin

**Specificity** Gamma Tubulin protein detects endogenous levels of TUBG1

### Target Information

**Gene name** TUBG1

**Protein Name** TUBG1

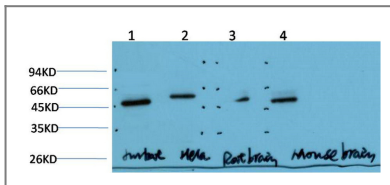
Organism	Gene ID	UniProt ID
Human	<a href="#">7283;</a>	<a href="#">P23258;</a>
Mouse		<a href="#">P83887;</a>
Rat		<a href="#">P83888;</a>

**Cellular Localization** Cytoplasm, cytoskeleton, microtubule organizing center, centrosome . Cytoplasm, cytoskeleton, spindle . Localizes to mitotic spindle microtubules. .

**Tissue specificity** Mammary cancer,Skin,

**Function** Function:Tubulin is the major constituent of microtubules. Gamma tubulin is found at microtubule organizing centers (MTOC) such as the spindle poles or the centrosome, suggesting that it is involved in the minus-end nucleation of microtubule assembly.,mass spectrometry: PubMed:11840567,similarity:Belongs to the tubulin family.,subunit:Interacts with GCP2 and GCP3. Interacts with B9D2.,

## Validation Data



Western Blot analysis of paraffin-embedded Jurkat\HeLa\Mouse-brain\Rat-brain using Gamma Tubulin Mouse mAb diluted at 1:1000.

## Contact information

Orders: order.cn@immunoway.com  
Support: support.cn@immunoway.com  
Telephone: 400-8787-807(China)  
Website: <http://www.immunoway.com.cn>  
Address: 2200 Ringwood Ave San Jose, CA 95131 USA



Please scan the QR code to access additional product information:  
**Gamma Tubulin (6C12) Mouse mAb**

For Research Use Only. Not for Use in Diagnostic Procedures.

[Antibody](#) | [ELISA Kits](#) | [Protein](#) | [Reagents](#)