

Tubulin α (Acetyl Lys40) (5H5) Mouse mAb

CatalogNo: YM3585

Orthogonal Validated 

Key Features

Host Species

- Mouse

Reactivity

- Human,Rat,Mouse

Applications

- WB,IHC,IF

MW

- 52kD (Observed)

Recommended Dilution Ratios

WB 1:1000-2000

IHC 1:100-200

IF 1:50-200

Storage

Storage* -15°C to -25°C/1 year(Do not lower than -25°C)**Formulation** Liquid in PBS containing 50% glycerol, 0.5% BSA and 0.02% sodium azide.

Basic Information

Clonality Monoclonal**Clone Number** 5H5

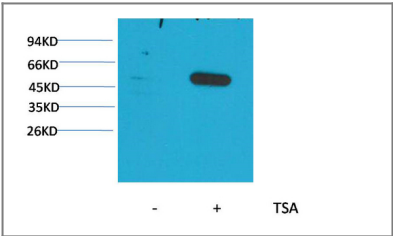
Immunogen Information

Immunogen Synthetic Peptide of α -tubulin (Acetyl Lys40)**Specificity** α -tubulin (Acetyl Lys40) protein detects endogenous levels of α -tubulin (Acetyl Lys40)

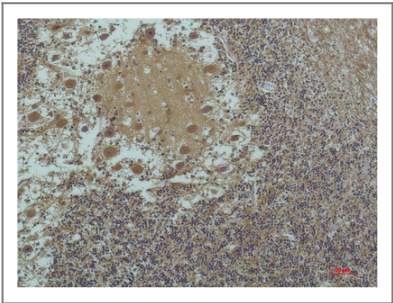
| Target Information

Gene name	TUBA1B		
Protein Name	Tubulin alpha-1B chain (Alpha-tubulin ubiquitous) (Tubulin K-alpha-1) (Tubulin alpha-ubiquitous chain)		
	Organism	Gene ID	UniProt ID
	Human	7277 ;	P68363 ;
	Mouse		P05213 ;
	Rat		Q6P9V9 ;
Cellular Localization	Cytoplasm, cytoskeleton.		
Tissue specificity	Brain,Cajal-Retzius cell,Colon,Embryonic kidney,Eye,Fetal brain cortex,Keratinocyte		
Function	Function:Tubulin is the major constituent of microtubules. It binds two moles of GTP, one at an exchangeable site on the beta chain and one at a non-exchangeable site on the alpha-chain.,PTM:Undergoes a tyrosination/detyrosination cycle, the cyclic removal and re-addition of a C-terminal tyrosine residue by the enzymes tubulin tyrosine carboxypeptidase (TTCP) and tubulin tyrosine ligase (TTL), respectively.,similarity:Belongs to the tubulin family.,subunit:Dimer of alpha and beta chains.,		

| Validation Data



Western blot analysis of extracts from HeLa cells, untreated (-) or treated with TSA (1μM, 18 hr; +), using Acetyl- α-tubulin(Lys40) Mouse mAb 1:2000.



Immunohistochemical analysis of paraffin-embedded Human Brain Tissue using α-tubulin(Acetyl Lys40) Mouse mAb diluted at 1:200.

| Contact information

Orders: order.cn@immunoway.com
Support: support.cn@immunoway.com
Telephone: 400-8787-807(China)
Website: <http://www.immunoway.com.cn>
Address: 2200 Ringwood Ave San Jose, CA 95131 USA



Please scan the QR code
to access additional
product information:
**Tubulin α (Acetyl
Lys40) (5H5) Mouse
mAb**

For Research Use Only. Not for Use in Diagnostic Procedures.

[Antibody](#) | [ELISA Kits](#) | [Protein](#) | [Reagents](#)