

α Tubulin (Acetyl Lys40) (4A8) Mouse mAb

CatalogNo: YM3519 **Orthogonal Validated** 

| Key Features

Host Species

- Mouse

Reactivity

- Human,Rat,Mouse,Drosophila

Applications

- WB,IF,IHC

MW

- 52kD (Observed)

| Storage

Storage* -15°C to -25°C/1 year (Do not lower than -25°C)

Formulation Liquid in PBS containing 50% glycerol, 0.5% BSA and 0.02% sodium azide.

| Recommended Dilution Ratios

WB 1:1000-2000

IHC 1:50-100

IF 1:200

| Basic Information

Clonality Monoclonal

Clone Number 4A8

| Immunogen Information

Immunogen Synthetic Peptide of α -tubulin (Acetyl Lys40)

Specificity α -tubulin (Acetyl Lys40) protein detects endogenous levels of α -tubulin (Acetyl Lys40)

Target Information

Gene name TUBA1B

Protein Name Tubulin alpha-1B chain (Alpha-tubulin ubiquitous) (Tubulin K-alpha-1) (Tubulin alpha-ubiquitous chain)

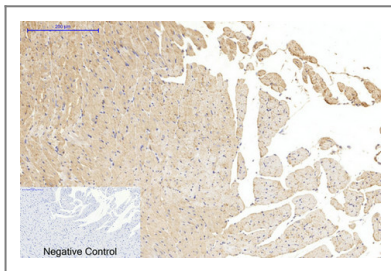
Organism	Gene ID	UniProt ID
Human	7277 ;	P68363 ;
Mouse		P05213 ;
Rat		Q6P9V9 ;

Cellular Localization Cytoplasm , cytoskeleton.

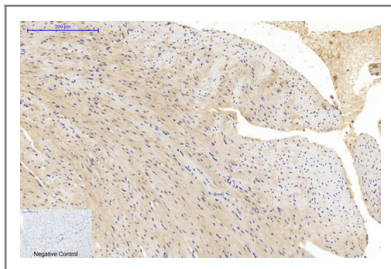
Tissue specificity Brain ,Cajal-Retzius cell ,Colon ,Embryonic kidney ,Eye ,Fetal brain cortex ,Keratinocyte

Function Function:Tubulin is the major constituent of microtubules. It binds two moles of GTP , one at an exchangeable site on the beta chain and one at a non-exchangeable site on the alpha-chain. ,PTM:Undergoes a tyrosination/detyrosination cycle , the cyclic removal and re-addition of a C-terminal tyrosine residue by the enzymes tubulin tyrosine carboxypeptidase (TTCP) and tubulin tyrosine ligase (TTL) , respectively. ,similarity:Belongs to the tubulin family. ,subunit:Dimer of alpha and beta chains. ,

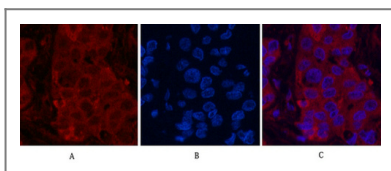
Validation Data



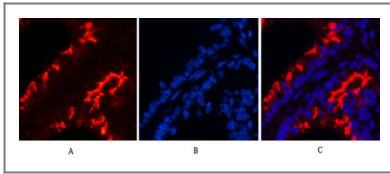
Immunohistochemical analysis of paraffin-embedded Rat-heart tissue. 1, α -tubulin (Acetyl Lys40) Monoclonal Antibody (4A8) was diluted at 1:200 (4°C overnight). 2, Sodium citrate pH 6.0 was used for antibody retrieval (>98°C,20min). 3,Secondary antibody was diluted at 1:200 (room temperature, 30min). Negative control was used by secondary antibody only.



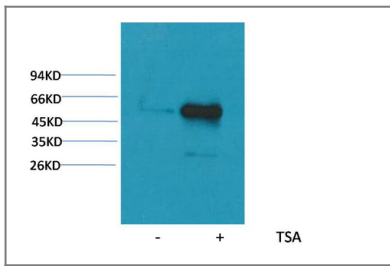
Immunohistochemical analysis of paraffin-embedded Mouse-heart tissue. 1, α -tubulin (Acetyl Lys40) Monoclonal Antibody (4A8) was diluted at 1:200 (4°C overnight). 2, Sodium citrate pH 6.0 was used for antibody retrieval (>98°C,20min). 3,Secondary antibody was diluted at 1:200 (room temperature, 30min). Negative control was used by secondary antibody only.



Immunofluorescence analysis of Human-liver-cancer tissue. 1, α -tubulin (Acetyl Lys40) Monoclonal Antibody (4A8) (red) was diluted at 1:200 (4°C overnight). 2, Cy3 labeled Secondary antibody was diluted at 1:300 (room temperature, 50min).3, Picture B: DAPI (blue) 10min. Picture A:Target. Picture B: DAPI. Picture C: merge of A+B



Immunofluorescence analysis of Mouse-lung tissue. 1, α -tubulin (Acetyl Lys40) Monoclonal Antibody (4A8) (red) was diluted at 1:200 (4°C overnight). 2, Cy3 labeled Secondary antibody was diluted at 1:300 (room temperature, 50min). 3, Picture B: DAPI (blue) 10min. Picture A: Target. Picture B: DAPI. Picture C: merge of A+B



Western blot analysis of extracts from Hela cells, untreated (-) or treated with TSA (1 μ M, 18 hr; +), using Acetyl- α -tubulin (Lys40) Mouse mAb 1:2000.

Contact information

Orders: order.cn@immunoway.com
Support: support.cn@immunoway.com
Telephone: 400-8787-807(China)
Website: <http://www.immunoway.com.cn>
Address: 2200 Ringwood Ave San Jose, CA 95131 USA



Please scan the QR code to access additional product information:
 α Tubulin (Acetyl Lys40) (4A8) Mouse mAb

For Research Use Only. Not for Use in Diagnostic Procedures.

[Antibody](#) | [ELISA Kits](#) | [Protein](#) | [Reagents](#)